

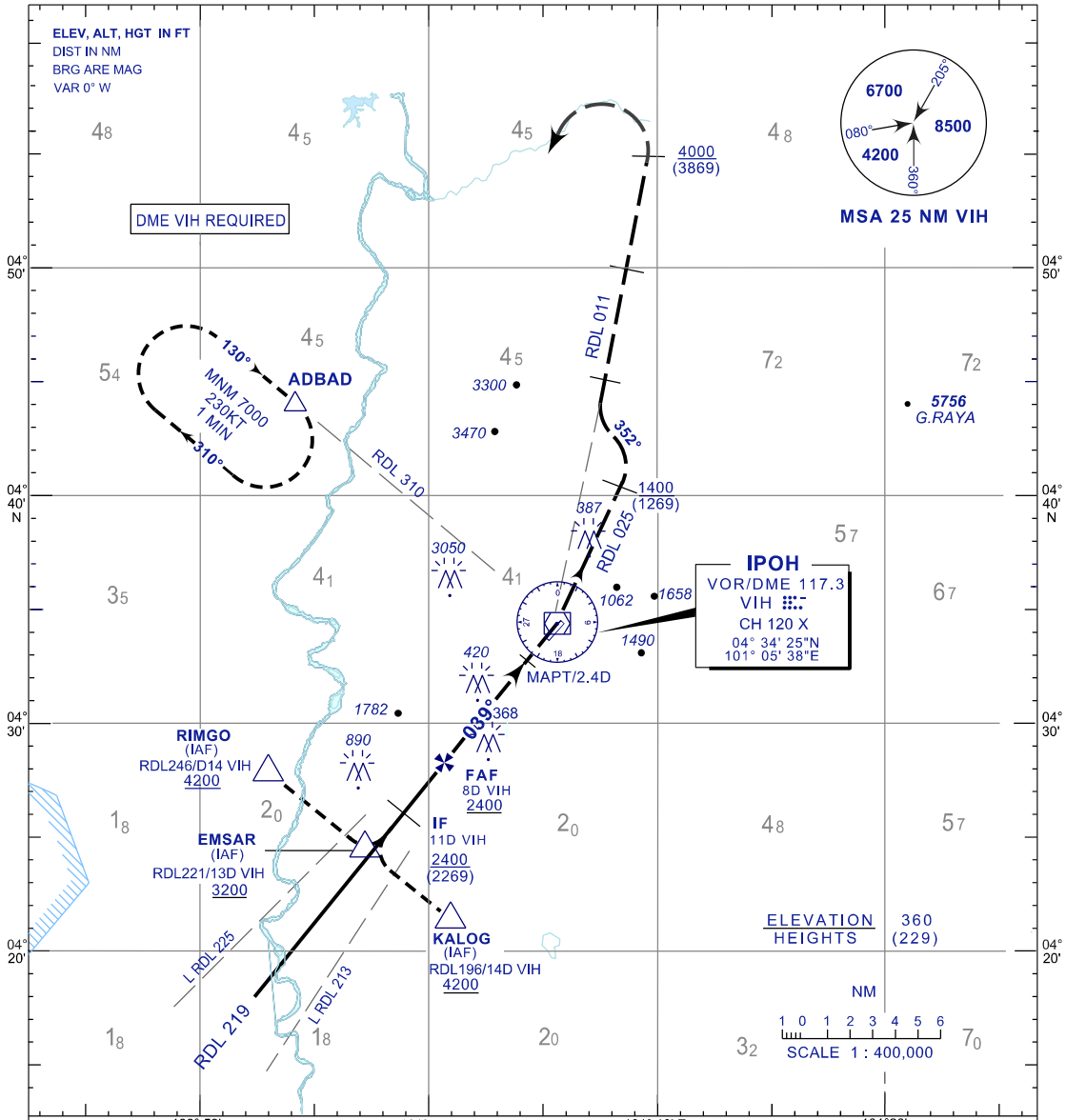
INSTRUMENT APPROACH CHART- ICAO

AERODROME ELEV 131 FT
 HEIGHTS RELATED TO
 THR RWY 04 - ELEV 130 FT

TWR 122.1
 SMC 121.6
 ATIS 127.05

IPOH/SULTAN AZLAN SHAH (WMKI) RWY04

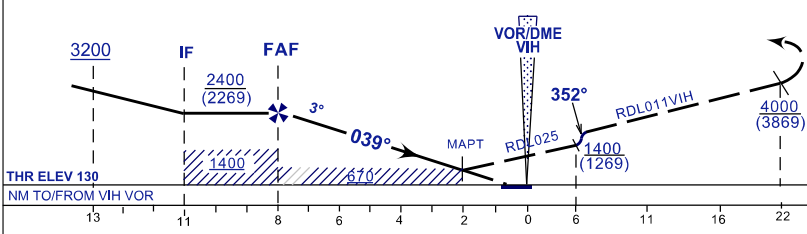
VOR Z



TRANSITION ALT 11000

USE QNH

MISSED APPROACH
 CLIMB 039° TO VIH VOR THEN RDL025 UNTILL PASSING 1400FT THEN TURN LEFT 352° INTERCEPT RDL011. CONTINUE CLIMB 7000FT ON PASSING 4000FT TURN LEFT TO HOLD OVER ADBAD OR AS DIRECTED BY ATC



| | | | | |
|-----------------------|-------------------|---------------|---|---|
| OCA/H | A | B | C | D |
| VOR/DME | 670(539) / 2,4DME | | | |
| CIRCLING / VISIBILITY | 700(569) / 1NM | NOT PERMITTED | | |

| | | | | |
|------------------------|------|------|------|------|
| KT | 70 | 90 | 120 | 150 |
| FAF - MAPT MIN : SEC | 3:22 | 2:37 | 1:58 | 1:34 |
| RATE OF DESCEND FT/MIN | 370 | 480 | 640 | 800 |

| | | | | | | | |
|-------------------------------------|------------|------------|------------|------------|-----------|----------|----------|
| ALTITUDE / HEIGHT ON FINAL APPROACH | | | | | | | |
| DME FM VIH | 8.0 | 7.0 | 6.0 | 5.0 | 4.0 | 3.0 | 2.4 |
| ALT(HGT) | 2400(2269) | 2060(1929) | 1740(1609) | 1420(1289) | 1100(969) | 790(659) | 670(539) |