

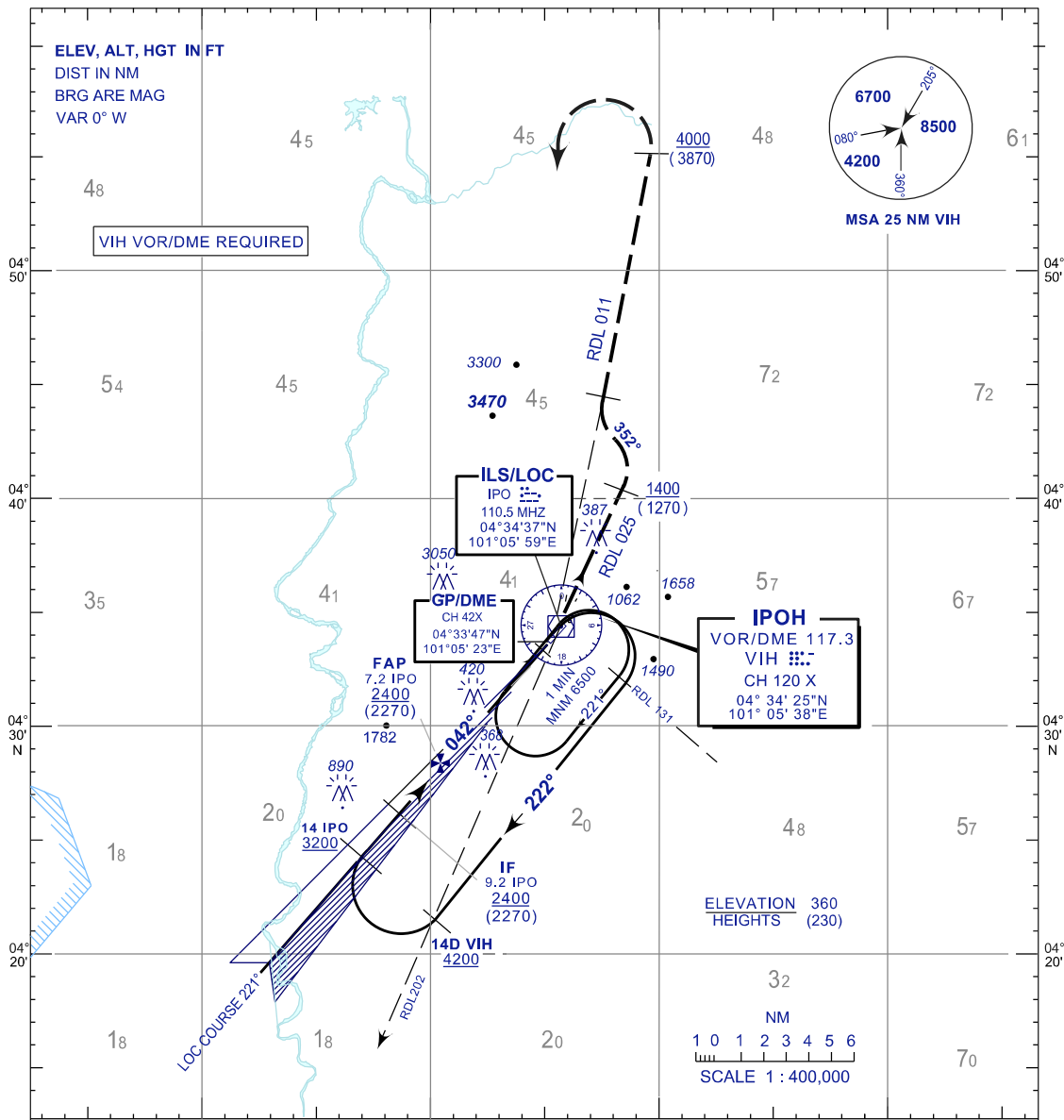
INSTRUMENT APPROACH CHART- ICAO

AERODROME ELEV 131 FT
 HEIGHTS RELATED TO
 THR RWY 04 - ELEV 130 FT

TWR 122.1
 SMC 121.6
 ATIS 127.05

IPOH/SULTAN AZLAN SHAH (WMKI)
 RWY04

ILS X/LOC X

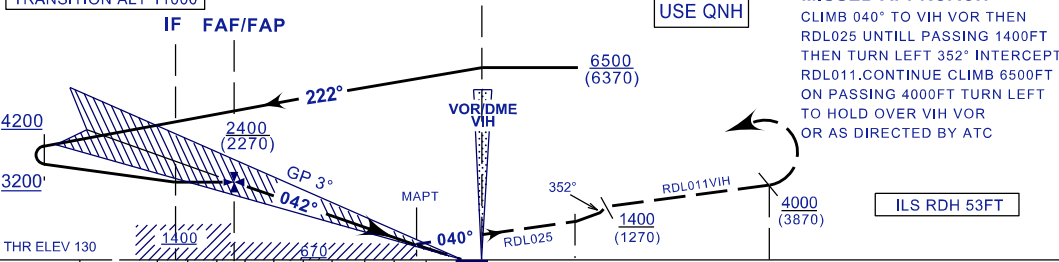


TRANSITION ALT 11000

USE QNH

MISSED APPROACH

CLIMB 040° TO VIH VOR THEN RDL025 UNTILL PASSING 1400FT THEN TURN LEFT 352° INTERCEPT RDL011. CONTINUE CLIMB 6500FT ON PASSING 4000FT TURN LEFT TO HOLD OVER VIH VOR OR AS DIRECTED BY ATC



NM TO/FROM IPO

NM TO/FROM VIH VOR

OCA/H	A	B	C	D
CAT I	365(235)	377(247)	385(255)	396(266)
GP INOP	500(370) / 1.5 IPO (2.2 VIH)			
CIRCLING	700(570)/1NM NOT PERMITTED			

KT	70	90	120	150
FAF-MAPT MIN : SEC	3:22	2:37	1:58	1:34
RATE OF DESCEND FT/MIN	370	480	640	800

ALTITUDE / HEIGHT ON FINAL APPROACH

DME(IPO)	8	6.0	5.0	4.0	3.0	2.0	1.0	0.74
ALT(HGT)	2400(2270)	2040(1910)	1730(1600)	1400(1270)	1090(960)	770(640)	450(320)	365(235)