

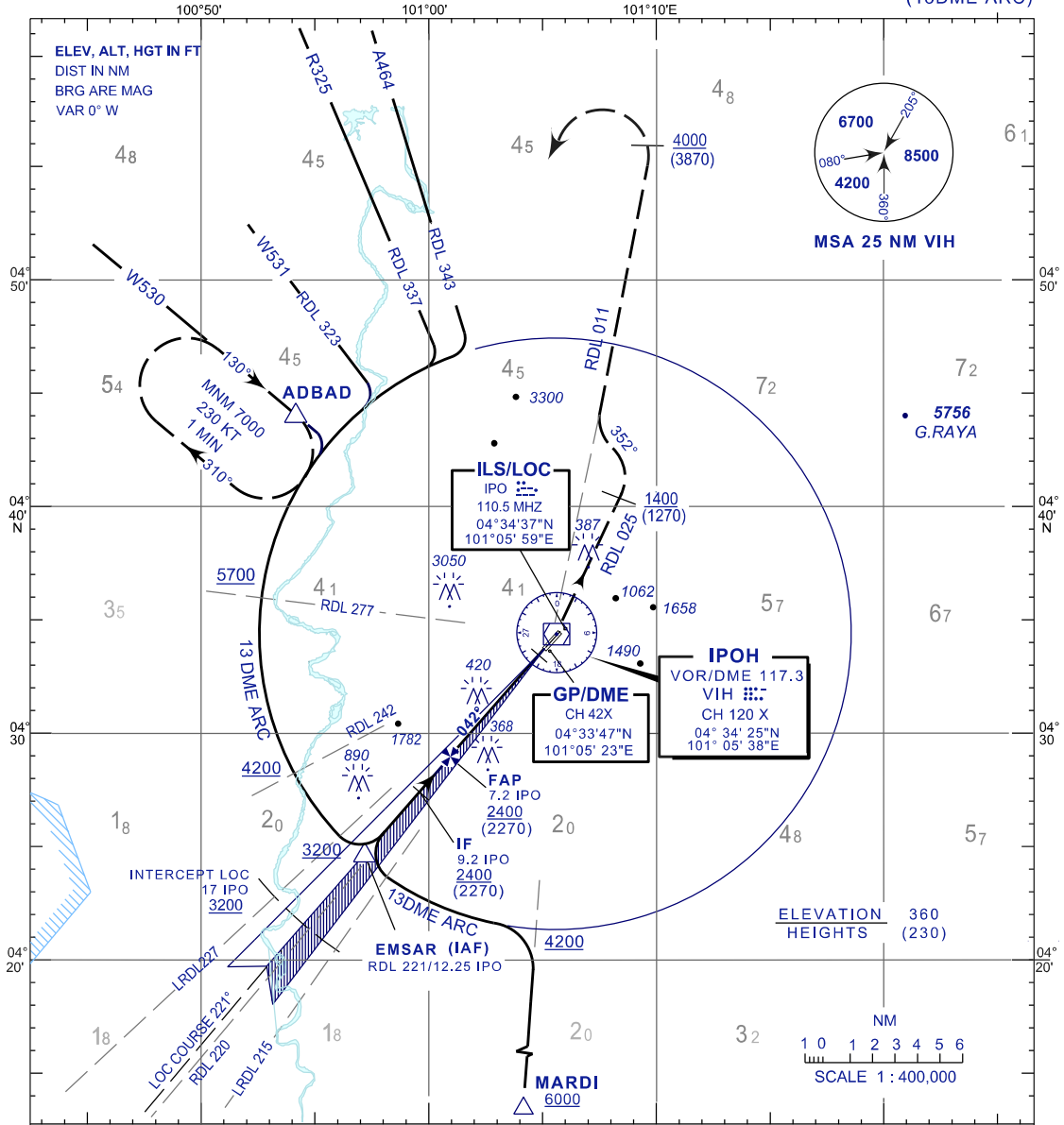
**INSTRUMENT
APPROACH
CHART- ICAO**

**AERODROME ELEV 131 FT
HEIGHTS RELATED TO
THR RWY 04 - ELEV 130 FT**

TWR 122.1
SMC 121.6
ATIS 127.05

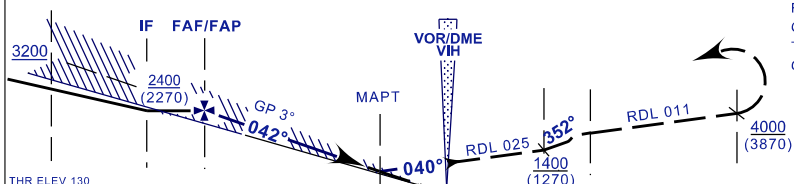
**IPOH/SULTAN AZLAN SHAH
(WMKI)
RWY04**

ILS Y / LOC Y
(13DME ARC)



TRANSITION ALT 11000

MISSED APPROACH
CLIMB 040° TO VIH VOR THEN
RDL025 UNTILL PASSING 1400FT
THEN TURN LEFT 352° INTERCEPT
RDL011. CONTINUE CLIMB 7000FT
ON PASSING 4000FT TURN LEFT
TO HOLD OVER ADBAD
OR AS DIRECTED BY ATC



ILS RDH 53FT

OCA/H	A	B	C	D				
CAT I	365(235)	377(247)	385(255)	396(266)				
GP INOP	500(370) / 1.5 IPO (2.2 VIH)							
CIRCLING	700(570)/1NM NOT PERMITTED							
ALTITUDE / HEIGHT ON FINAL APPROACH								
DME(IPO)	7.13	6.0	5.0	4.0	3.0	2.0	1.0	0.74
ALT(HGT)	2400(2270)	2040(1910)	1730(1600)	1400(1270)	1090(960)	770(640)	450(320)	365(235)

KT	70	90	120	150
FAF - MAPT MIN : SEC	3:22	2:37	1:58	1:34
RATE OF DESCEND FT/MIN	370	480	640	800