

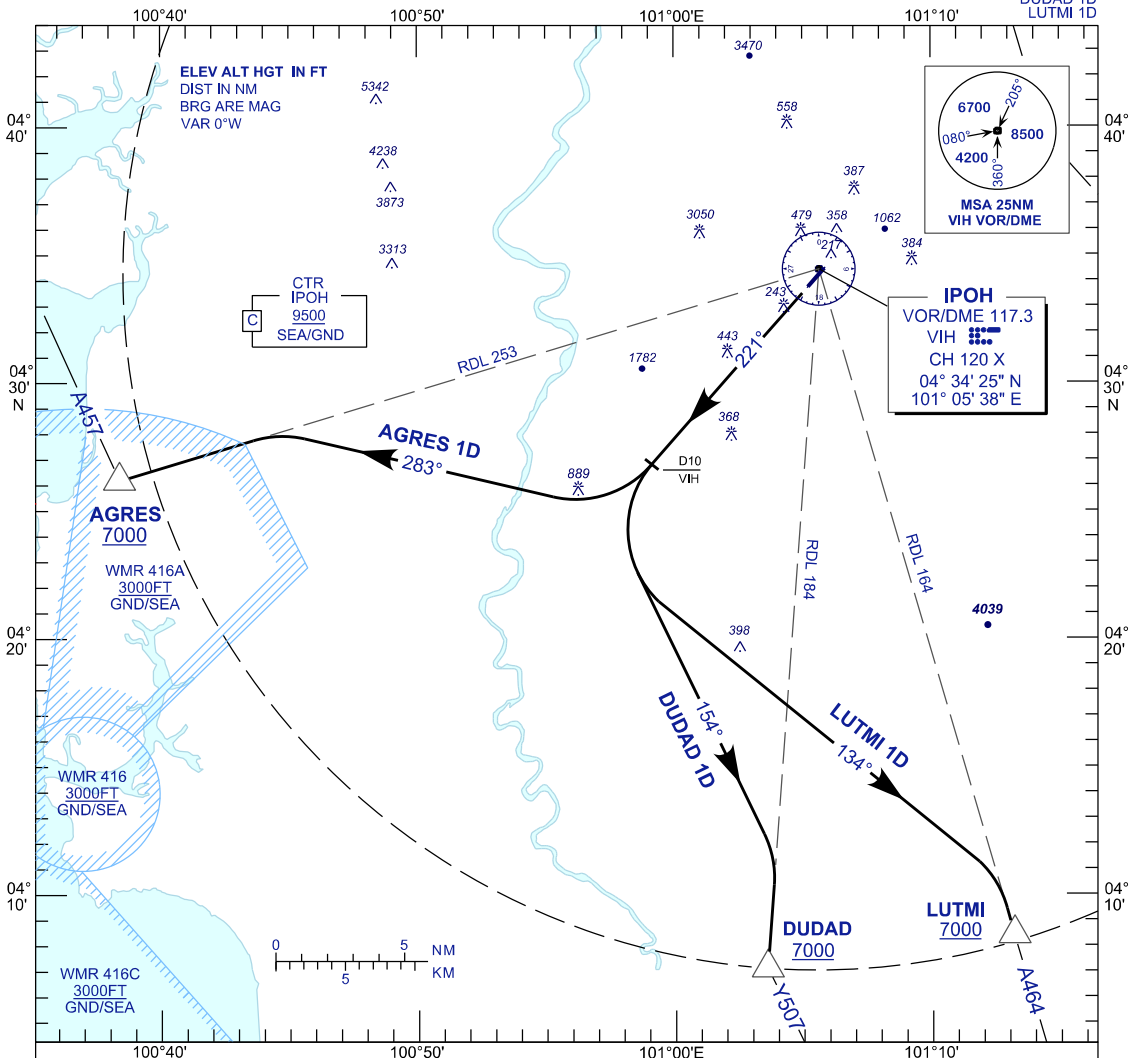
**STANDARD DEPARTURE CHART
INSTRUMENT (SID) - ICAO**

**IPOH/SULTAN
AZLAN SHAH (WMKI)
RWY 22**

TRANSITION ALTITUDE
11000 FT

TWR 122.1
SMC 121.6
ATIS 127.05

AGRES 1D
DUDAD 1D
LUTMI 1D



COMMUNICATION FAILURE :

SQUAWK 7600

- IF UNDER PILOT NAVIGATION, MAINTAIN LAST ASSIGNED LEVEL FOR 3 MINUTES, IF NO ONWARD CLEARANCE IS RECEIVED. SUBSEQUENTLY CLIMB TO COMPLY WITH SID.
- IF UNDER RADAR VECTORING : MAINTAIN VECTOR FOR 2 MINUTES, IF BELOW MSA, CLIMB TO MSA, THEN TRACK TO INTERCEPT CLEARED OR PREVIOUSLY ASSIGNED SID TO DESTINATION.

INITIAL CLIMB PROCEDURE	DESIGNATOR	SID DESCRIPTION
AFTER TAKE-OFF TRACK 221° CLIMB 5500 FT, AT 10 DME VIH TURN LEFT	LUTMI 1 DELTA	TRACK 134° TO INTERCEPT RDL164 VIH VOR OUTBOUND TO LUTMI THEN AIRWAY A464
	DUDAD 1 DELTA	TRACK 154° TO INTERCEPT RDL184 VIH VOR OUTBOUND TO DUDAD THEN AIRWAY Y507
AFTER TAKE-OFF TRACK 221° CLIMB 5500 FT, AT 10 DME VIH TURN RIGHT	AGRES 1 DELTA	TRACK 283° TO INTERCEPT RDL 253 VIH VOR OUTBOUND TO AGRES THEN AIRWAY A457

NOTE : MINIMUM CLIMB GRADIENT (PDG) 4.8% UNTIL 5500 FT

CHANGES: CHANGE 129° TO 134° ON SID DESCRIPTION,
CHANGE LUTMI 1D COURSE.