

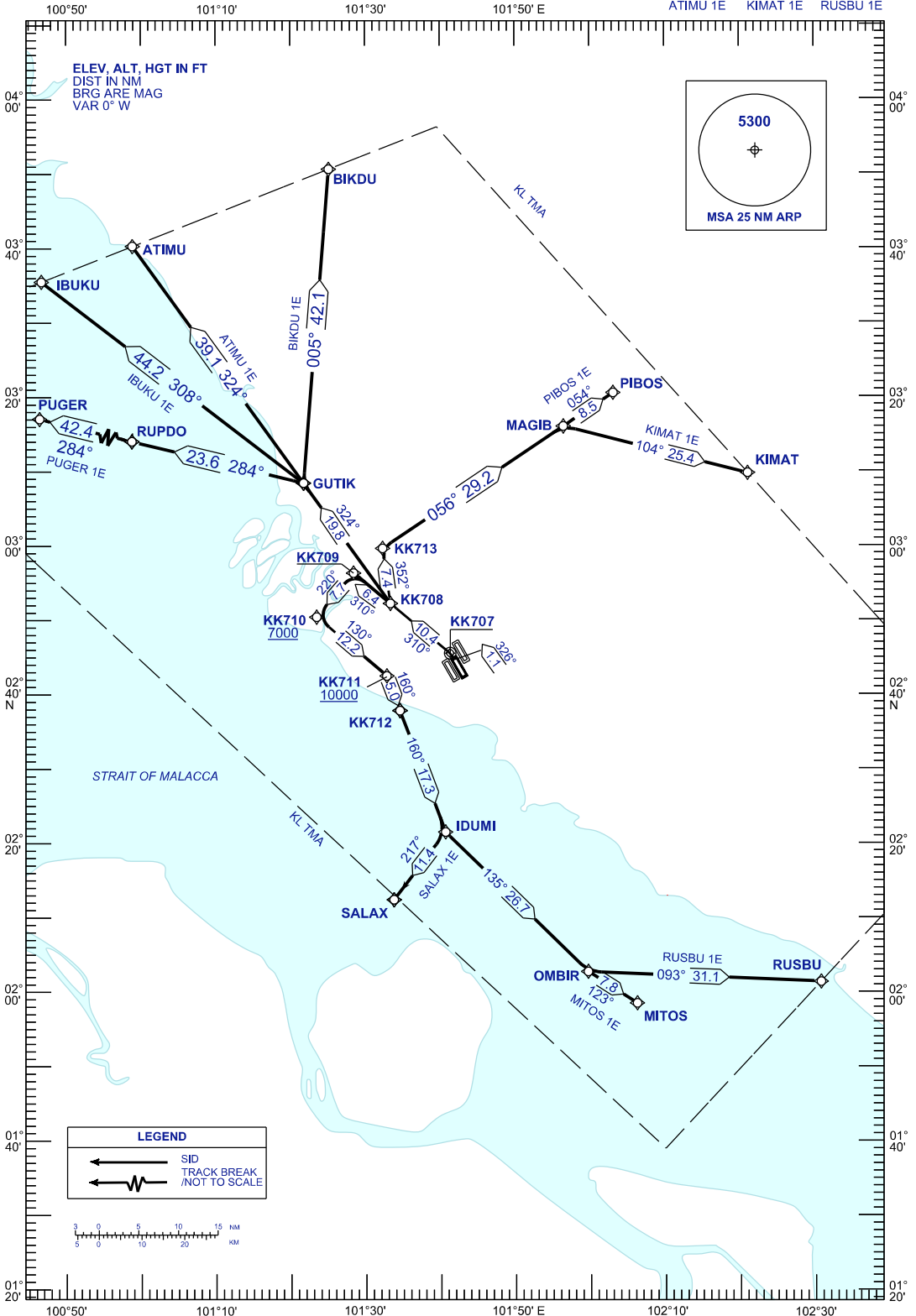
**STANDARD DEPARTURE CHART
INSTRUMENT (SID) - ICAO**

TRANSITION ALT 11000 FT

APP	124.200 118.650 135.750	TWR	118.500
		GND	121.800
		ATIS	122.525

**SEPANG/KL INTERNATIONAL
AIRPORT (WMKK)
RNAV (GNSS) RWY 32L**

PUGER 1E BIKDU 1E SALAX 1E
IBUKU 1E PIBOS 1E MITOS 1E
ATIMU 1E KIMAT 1E RUSBU 1E



CHANGES: CHANGE BEARING AND DISTANCE BETWEEN MAGIB AND PIBOS,
CHANGE DISTANCE BETWEEN RUPDO TO PUGER,
ADD BEARING & DISTANCE FROM RWY TO KK707.