

**INITIAL  
APPROACH  
CHART**

TRANSITION ALT 11000  
**AERODROME ELEV 69 FT**

APP	121.250	TWR	119.800
	124.200	GND	118.050
	118.650	ATIS	128.050
	125.650		
	135.750		

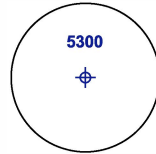
**SEPANG/KL INTERNATIONAL  
AIRPORT (WMKK)  
RNAV (GNSS) RWY 15**

INITIAL APPROACH PROCEDURE  
VIA PMS EAST / WEST / NORTH

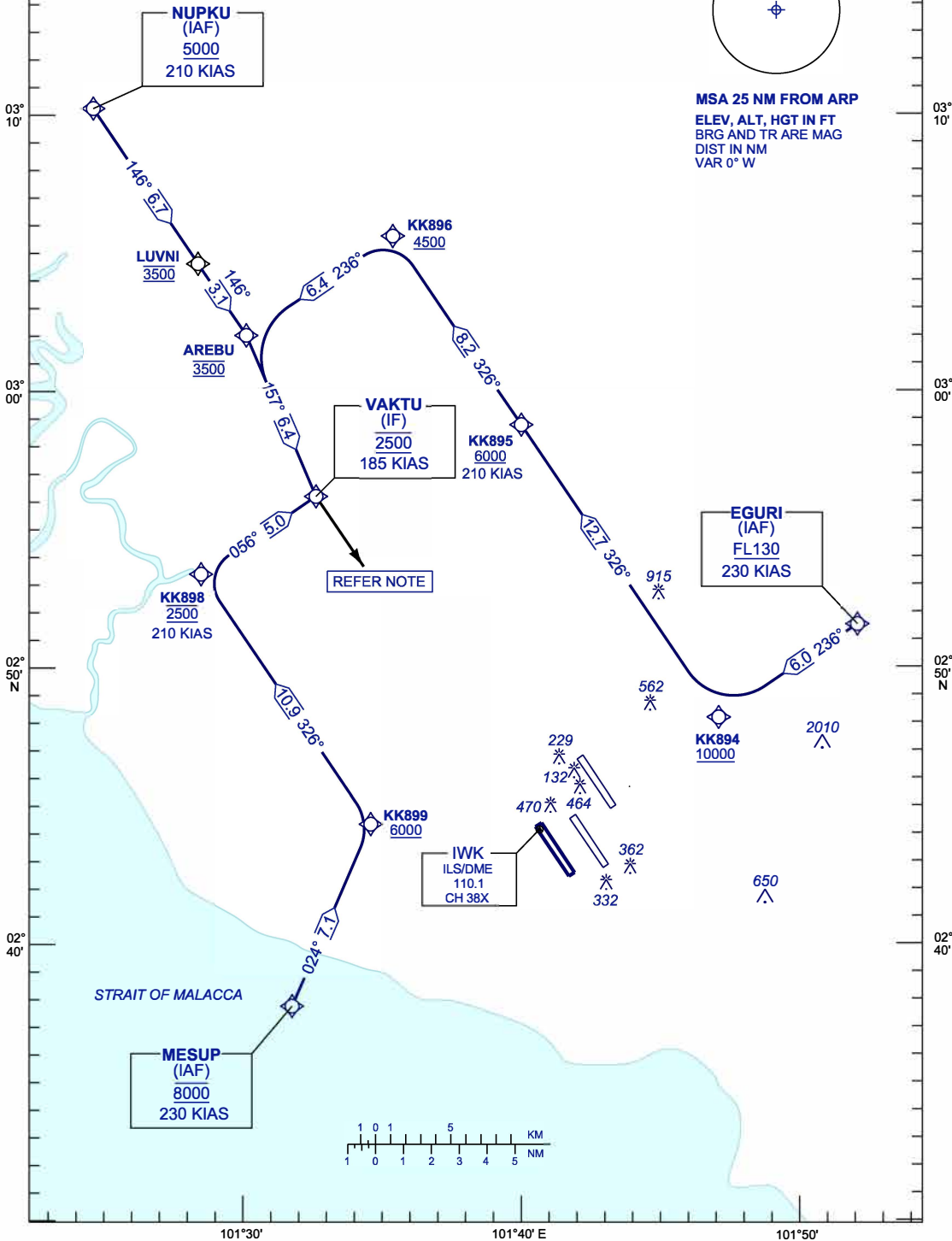
101°30'

101°40' E

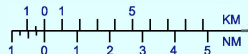
NOTE : AFTER WAYPOINT VAKTU, REFER INSTRUMENT APPROACH CHART FOR  
ILS OR LOC / RNAV (GNSS) APPROACH RWY 15



**MSA 25 NM FROM ARP**  
ELEV, ALT, HGT IN FT  
BRG AND TR ARE MAG  
DIST IN NM  
VAR 0° W



REFER NOTE



STRAIT OF MALACCA

101°30'

101°40' E

101°50'

03° 10'

03° 00'

02° 50' N

02° 40'

03° 10'

03° 00'

02° 50' N

02° 40'