

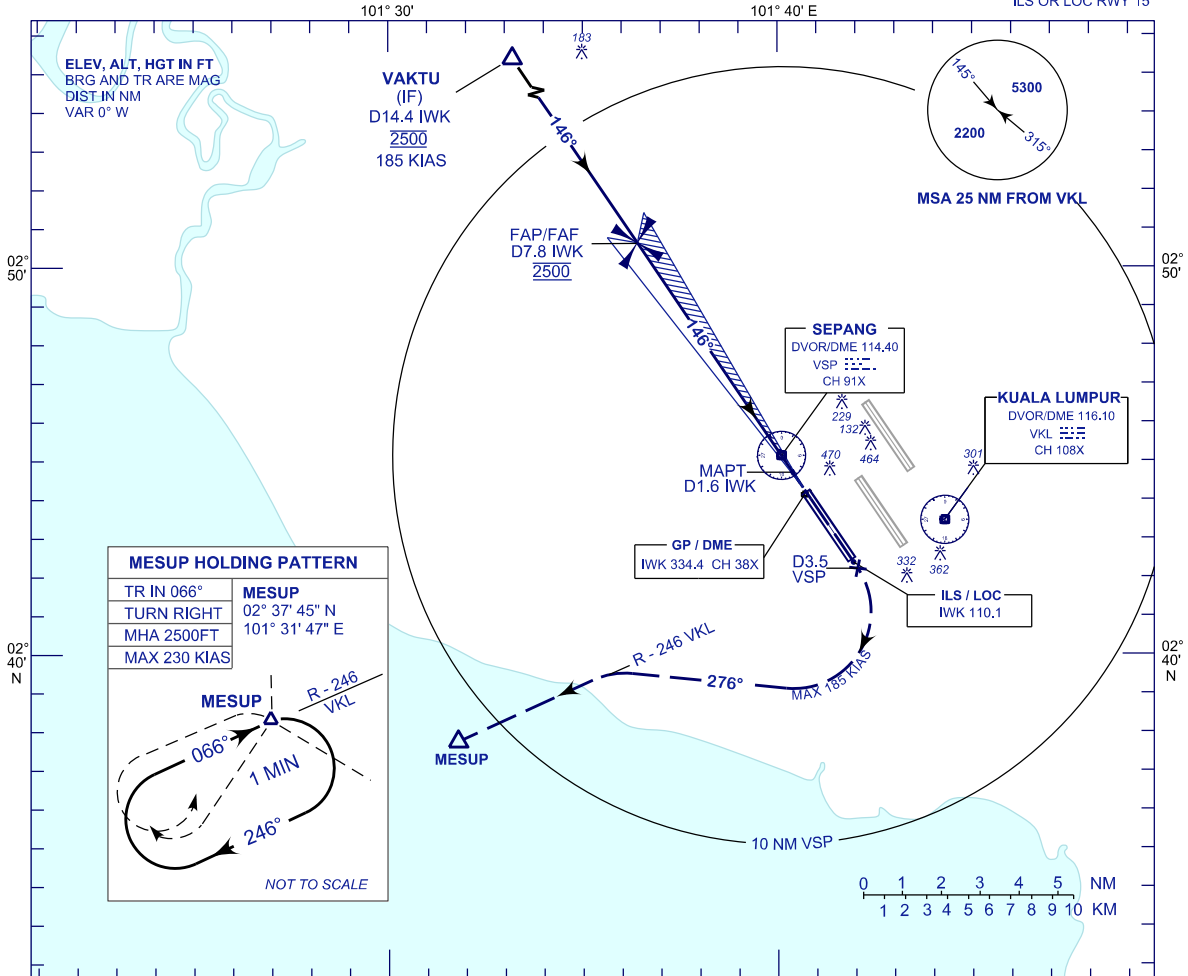
**INSTRUMENT
APPROACH
CHART - ICAO**

AERODROME ELEV 69 FT
HEIGHT RELATED TO
THR RWY 15 - ELEV 28 FT

APP 124.20 119.45 125.10	TWR 119.80	SMC 118.05	ATIS 128.05
-----------------------------------	---------------	---------------	----------------

**SEPANG/KL INTERNATIONAL
AIRPORT (WMKK)**

ILS OR LOC RWY 15



MESUP HOLDING PATTERN

TR IN 066°	MESUP
TURN RIGHT	02° 37' 45" N
MHA 2500FT	101° 31' 47" E
MAX 230 KIAS	

NOT TO SCALE

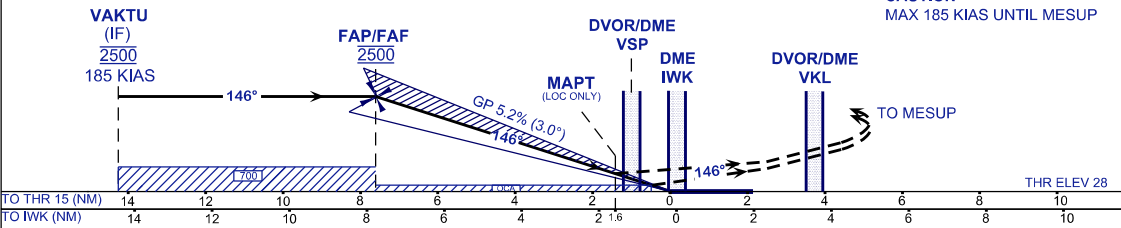
USE QNH
ILS RDH 52 FT

MISSED APPROACH

AT MAPT, CLIMB 2500FT ON TR 146°, PASSING 3.5 DME VSP
TURN RIGHT ON TR 276° TO INTERCEPT RDL 246 VKL TO MESUP
AND HOLD OR AS DIRECTED BY ATC

TRANSITION LEVEL FL130
TRANSITION ALT 11 000

CAUTION
MAX 185 KIAS UNTIL MESUP



OCA (OCH)	A	B	C	D
ILS/DME CAT I	232 (205)			
LOC/DME (GP INOP)	580 (553)			

GROUND SPEED (GS)	KT	80	100	120	140	160	180
FAP - RWY15 (7.6 NM)	MIN:SEC	5:43	4:34	3:49	3:16	2:52	2:33
RATE OF DESCEND (318.4 FT/NM)	FT/MIN	420	530	630	740	840	950

DIST IWK DME	NM	7.8	6.8	5.8	4.8	3.8	2.8	1.8	0.8
DIST THR/RWY15	NM	7.6	6.6	5.6	4.6	3.6	2.6	1.6	0.6
ALTITUDE	FT	2500	2180	1862	1543	1225	907	588	270