

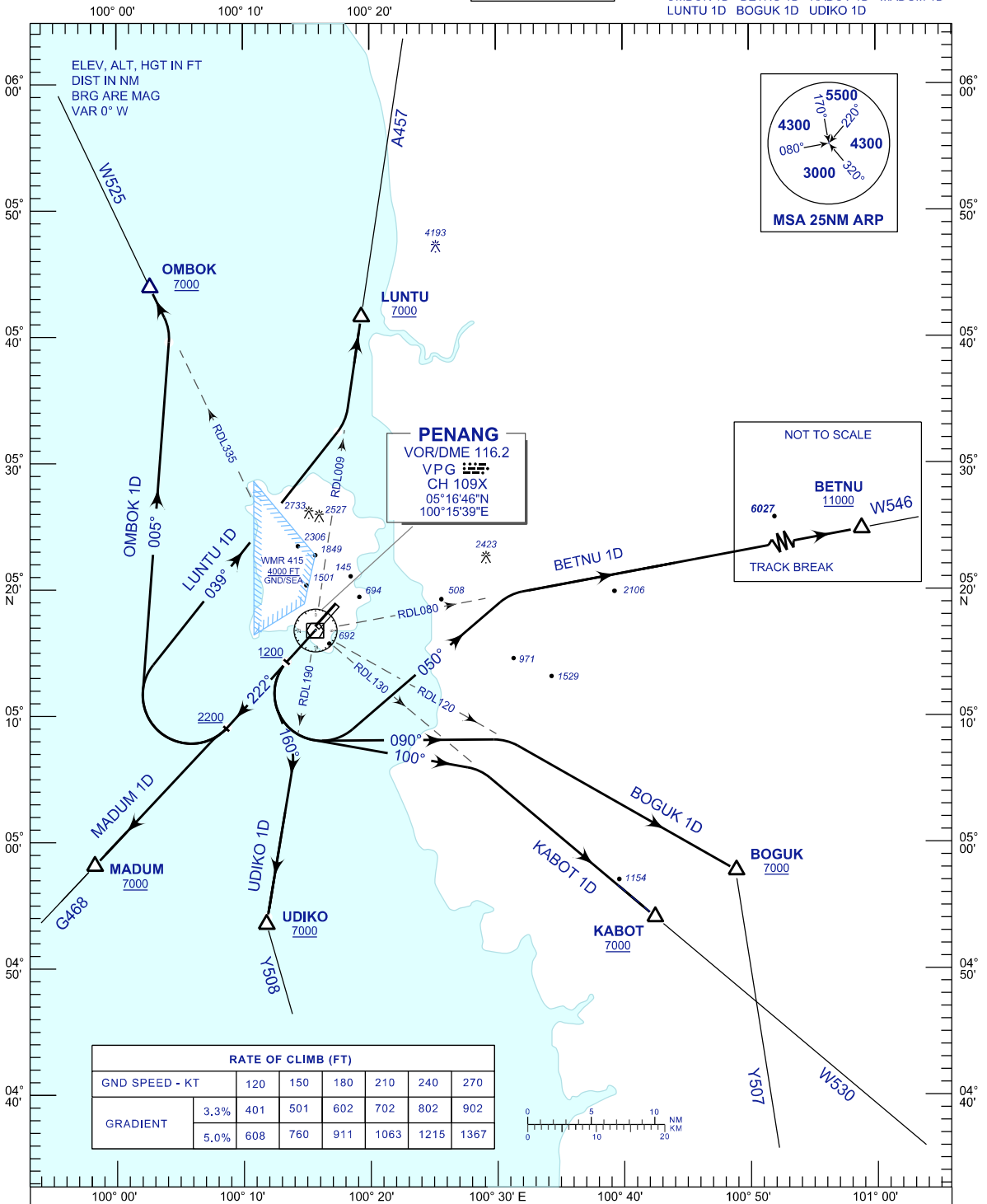
**STANDARD DEPARTURE CHART
INSTRUMENT (SID) - ICAO**

TRANSITION ALTITUDE
11000 FT

APP 125.925
TWR 121.1
SMC 121.6, 121.9
ATIS 126.4

**PENANG/PENANG
INTERNATIONAL AIRPORT (WMKP)
RWY 22**

OMBOK 1D BETNU 1D KABOT 1D MADUM 1D
LUNTU 1D BOGUK 1D UDIKO 1D



COMMUNICATION FAILURE :

SQUAWK 7600

- IF UNDER PILOT NAVIGATION, MAINTAIN LAST ASSIGNED LEVEL FOR 3 MINUTES, IF NO ONWARD CLEARANCE IS RECEIVED. SUBSEQUENTLY CLIMB TO COMPLY WITH SID.
- IF UNDER RADAR VECTORING : MAINTAIN VECTOR FOR 2 MINUTES, IF BELOW MSA, CLIMB TO MSA, THEN TRACK TO INTERCEPT CLEARED OR PREVIOUSLY ASSIGNED SID TO DESTINATION.

CHANGES : CHANGE APP FREQUENCY VALUE.