

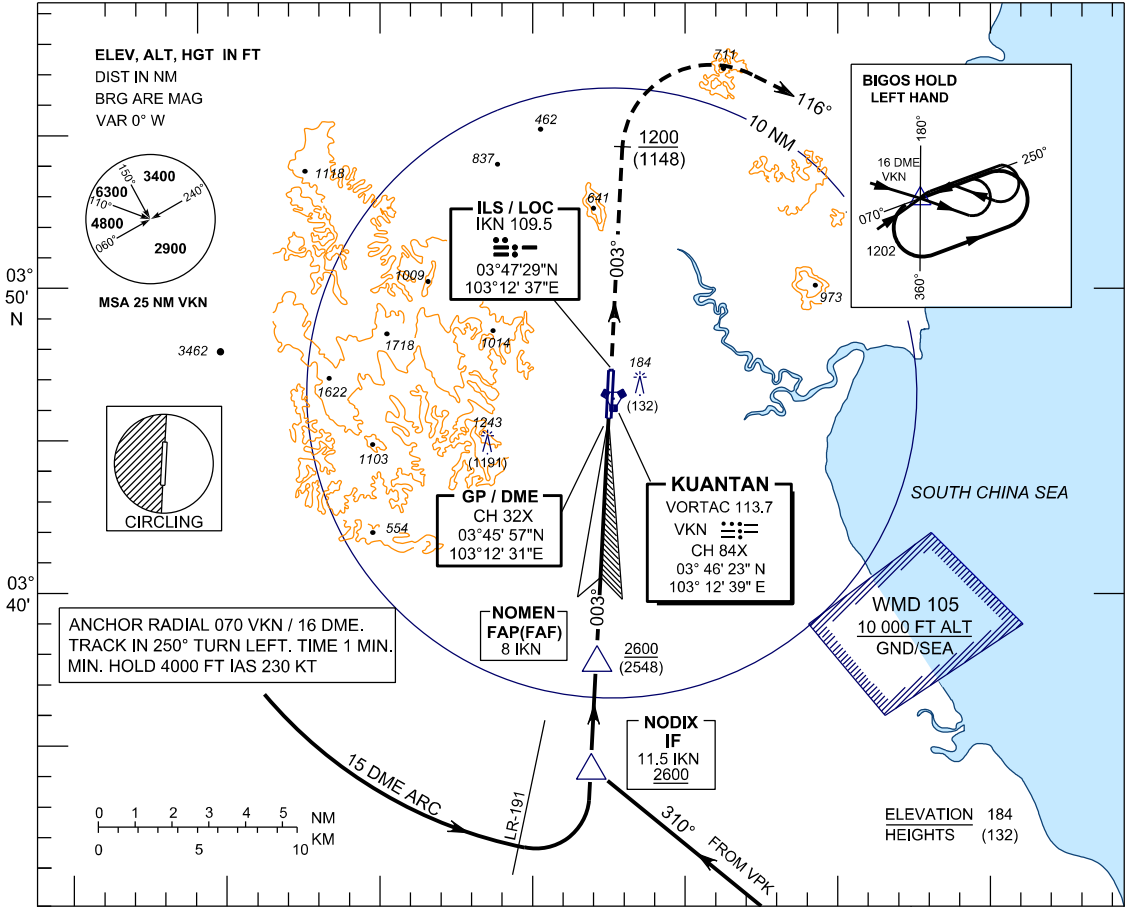
**INSTRUMENT
APPROACH
CHART - ICAO**

**AERODROME ELEV 55 FT
HEIGHT RELATED TO
THR RWY 36 - ELEV 52 FT**

TWR 118.1, 238.1
GND 263.9, 120.4
APP 119.7, 121.5
ATIS 127.5, 253.8
SRA 261.6, 118.7

**KUANTAN/SULTAN
AHMAD SHAH (WMKD)
RWY36**

ILS Y
(15 DME ARC ARR)

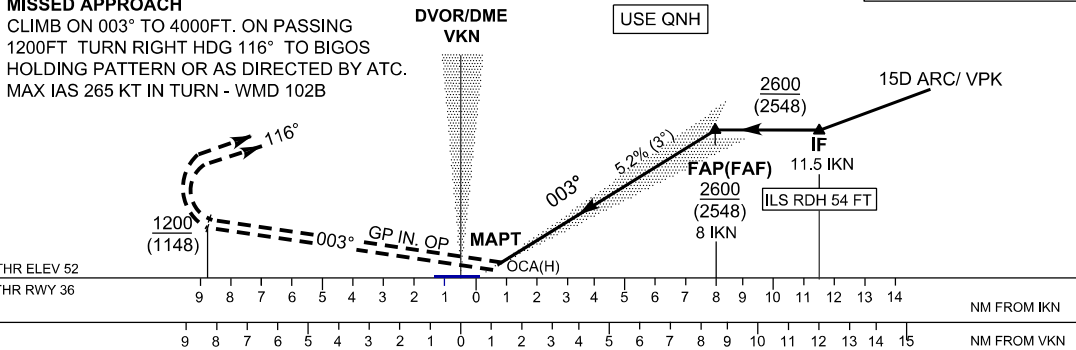


ANCHOR RADIAL 070 VKN / 16 DME. TRACK IN 250° TURN LEFT. TIME 1 MIN. MIN. HOLD 4000 FT IAS 230 KT

0 1 2 3 4 5 NM
0 5 10 KM

103° 00' 103° 10' E 103° 20'

TRANSITION LEVEL FL 130
TRANSITION ALT 11000



OCA(OCH)				
AIRCRAFT CATEGORY	A	B	C	D
ILS / DME CAT. 1	260(208)	270(218)	280(228)	290(238)
LLZ / DME GP IN OP	290(238) / 0.7 DME IKN			
CIRCLING & MIN VISIBILITY - KM (NM)	600(545)	900(845)	1100(1045)	
	1.9(1.0)	2.8(1.5)	3.7(2.0)	4.6(2.5)

TIME TO THR RWY 36 FROM FAP 8 NM			
GROUND SPEED (KT)	70	90	120
5.2% DESCENT (FT/MIN)	6:51	5:20	4:00
MINUTES : SECONDS	370	480	640

CAUTION : CIRLING IS NOT AUTHORISED WEST OF RUNWAY 18/36

ALTITUDE VS DME DISTANCE TO THR RWY 36									
DME DISTANCE	8	7	6	5	4	3	2	1	0.7
ALTITUDE	2600	2287	1968	1650	1332	1013	695	376	290

GROUND SPEED (KT)	150	180	210
MINUTES : SECONDS	3:12	2:40	2:17
5.2% DESCENT (FT/MIN)	800	1000	1115