

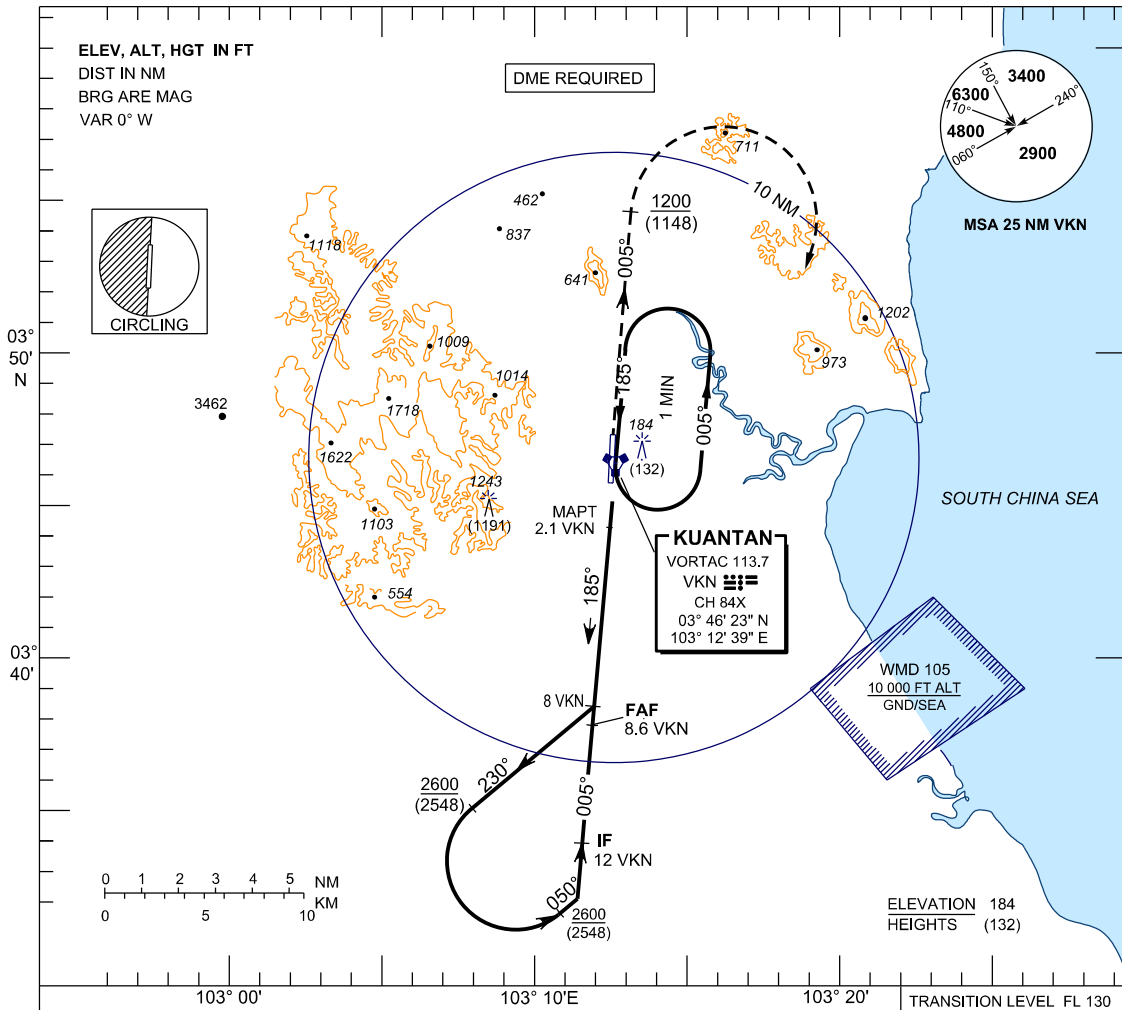
**INSTRUMENT
APPROACH
CHART - ICAO**

AERODROME ELEV 55 FT
HEIGHT RELATED TO
THR RWY 36 - ELEV 52 FT

TWR 118.1, 238.1
GND 263.9, 120.4
APP 119.7, 121.5
ATIS 127.5, 253.8
SRA 261.6, 118.7

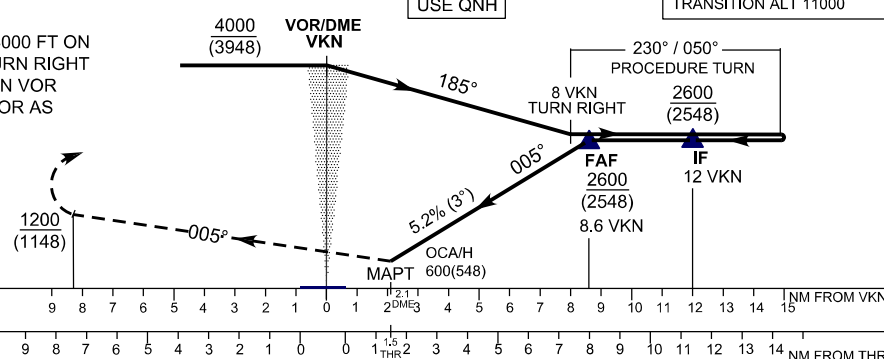
**KUANTAN/SULTAN
AHMAD SHAH (WMKD)
RWY 36**

VOR



MISSED APPROACH

CLIMB ON 005° TO 4000 FT ON
PASSING 1200 FT TURN RIGHT
AND RETURN TO VKN VOR
HOLDING PATTERN OR AS
DIRECTED BY ATC
MAX IAS 265 KT IN
TURN - WMR 102B



OCA (H) FT.				
AIRCRAFT CATEGORY	A	B	C	D
STRAIGHT-IN - APPROACH	600 (548) / 2.1 DME			
CIRCLING	970 (915)		1800 (1745)	
CIRCLING & MIN VISIBILITY - KM(NM)	1.9(1.0)	2.8(1.5)	3.7(2.0)	4.6(2.5)

TIME TO THR RWY 36 FROM FAF 8 NM			
GROUND SPEED (KT)	70	90	120
MIN : SEC	6:51	5:20	4:00
5.2% DESCENT (FT / MIN)	370	480	640

CAUTION : CIRCLING IS NOT UTHORISED WEST OF RUNWAY 18 / 36

ALTITUDE VS DME DISTANCE TO THR RWY 36							
DME DISTANCE	8.6	7.6	6.6	5.6	4.6	3.6	2.1
ALTITUDE	2600	2287	1968	1650	1332	1013	600

GROUND SPEED (KT)			
150	180	210	
MIN : SEC	3:12	2:40	2:17
5.2% DESCENT (FT / MIN)	800	1000	1115