

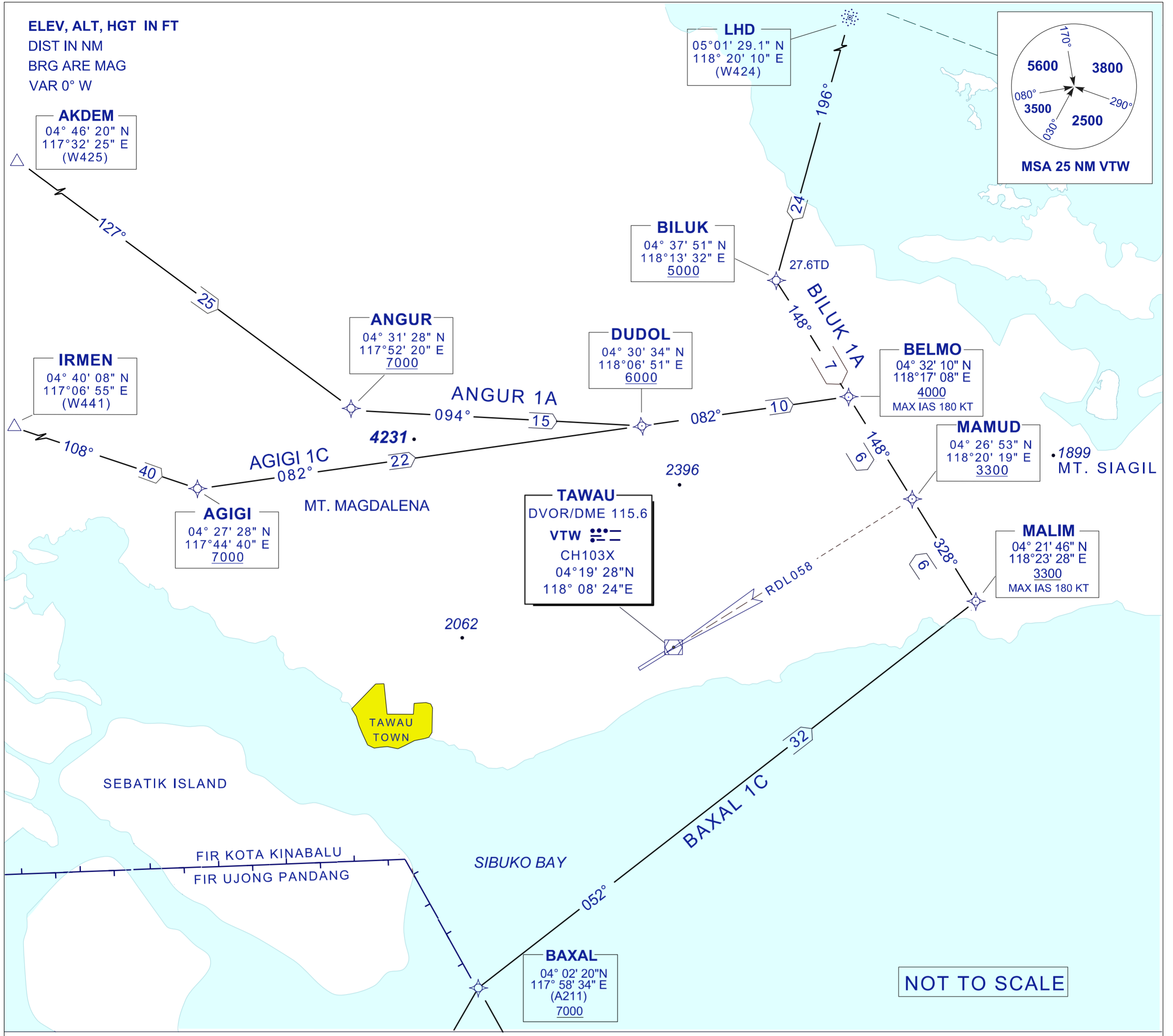
STANDARD ARRIVAL CHART INSTRUMENT (STAR)

TRANSITION ALTITUDE
11 000 FT

SMC	121.90
TWR	122.50
APP	123.55
ATIS	126.25

TAWAU/TAWAU (WBKW) RWY 24 (RNAV)

AGIGI 1C ANGUR 1A
BILUK 1A BAXAL 1C



AGIGI 1 CHARLIE ARRIVAL

- FROM W441 / IRMEN TO AGIGI
- TRACK 082° TO DUDOL AND BELMO
- TURN RIGHT TRACK 148° TO MAMUD
- INTERCEPT LOC OR RDL 058

ANGUR 1 ALPHA ARRIVAL

- FROM W425 / AKDEM TO ANGUR
- TRACK 094° TO DUDOL
- THENCE 082° TO BELMO
- TURN RIGHT TRACK 148° TO MAMUD
- INTERCEPT LOC OR RDL 058

BILUK 1 ALPHA ARRIVAL

- FROM LHD/W424 TO BILUK
- TRACK 148° TO BELMO
- THENCE TO MAMUD
- INTERCEPT LOC OR RDL 058

BAXAL 1 CHARLIE ARRIVAL

- FROM A211/BAXAL TRACK 052° TO MALIM
- TURN LEFT TRACK 328° TO MAMUD
- INTERCEPT LOC OR RDL 058

COMMUNICATION FAILURE :

SET TRANSPONDER CODE 7600
 PROCEED TO MAMUD AT LAST RECEIVED OR ACKNOWLEDGED EAT OR, IF NO EAT
 HAS BEEN RECEIVED OR ACKNOWLEDGED AT FPL EAT DESCEND IN THE MAMUD
 HOLDING PATTERN TO 3300FT, CARRY OUT STANDARD INSTRUMENT APPROACH
 RWY24

CHANGES : AT CHART IDENTIFICATION, CHANGE AGIGI 1A TO AGIGI 1C
 AND BAXAL 1A TO BAXAL 1C.