

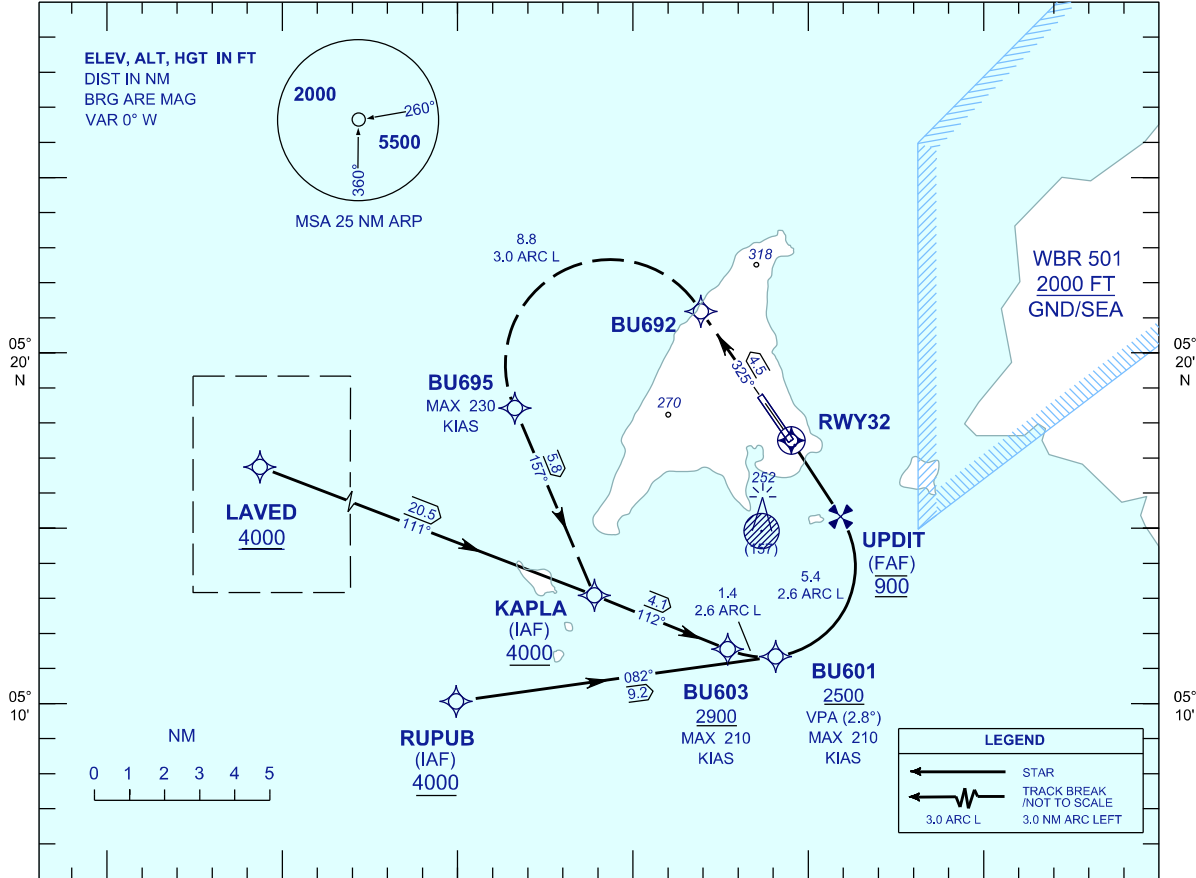
INSTRUMENT APPROACH CHART - ICAO

AERODROME ELEV 100 FT
 HEIGHTS RELATED TO
 THR RWY 32 - ELEV 95 FT

APP 119.70, 249.30
 TWR 118.10, 238.10
 SMC 118.35, 235.10
 ATIS 126.85

LABUAN/LABUAN (WBKL)

RNP Z RWY 32 (AR)

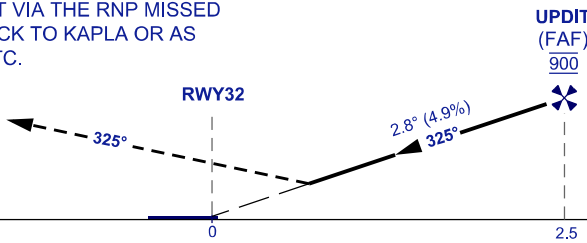


VPA 2.8°
 RDH 50FT

MISSED APPROACH

CLIMB TO 4000FT VIA THE RNP MISSED APPROACH TRACK TO KAPLA OR AS DIRECTED BY ATC.

TRANSITION LEVEL FL 130
 TRANSITION ALT 11000



OCA/H	
ACFT CAT.	C D
RNP 0.3	511 (416)

GROUND SPEED - KT	70	90	100	120	140	160
RATE OF DESCENT (2.8°) (FT/MIN)	347	446	495	594	693	792

DISTANCE TO THRESHOLD (NM)	2.5	2	1
ALTITUDE (FT)	900	670	370

- 1. AUTHORIZATION REQUIRED**
- 2. GNSS REQUIRED**
- 3. RF REQUIRED**
4. APPROACH NOT AUTHORIZED WHEN AIRPORT TEMPERATURE BELOW 17°C OR ABOVE 40°C
5. WBKL ALTIMETER SETTING REQUIRED.
6. PAPI AND VERTICAL PATH ANGLE NOT COINCIDENT
7. PROCEDURE REQUIRES RNP 1.0 IN FEEDER SEGMENTS.
8. PROCEDURE REQUIRES RNP 0.3 FROM IAF'S TO RWY
9. CLIMB GRADIENT OF 3.3% TO 4000FT REQUIRED TO REACH KAPLA
10. VSS DOES NOT TAKE INTO ACCOUNT TRANSIENT OBJECTS.