

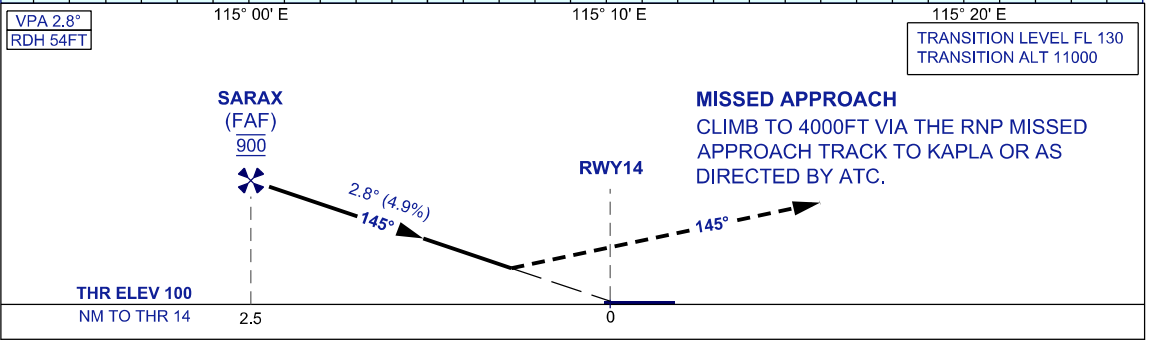
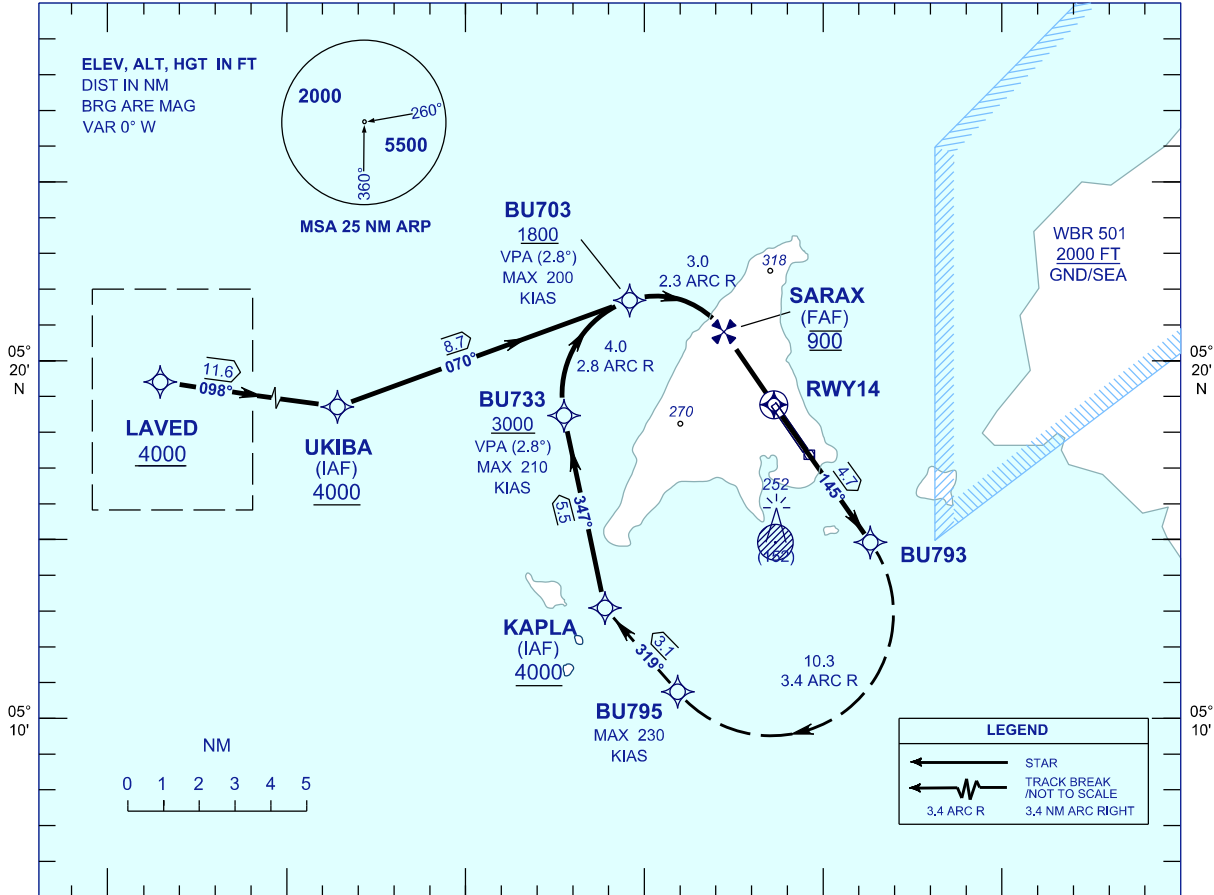
INSTRUMENT APPROACH CHART - ICAO

AERODROME ELEV 100 FT
 HEIGHTS RELATED TO
 THR RWY 14 - ELEV 100 FT

APP 119.70, 249.30
 TWR 118.10, 238.10
 SMC 118.35, 235.10
 ATIS 126.85

LABUAN/LABUAN (WBKL)

RNP Z RWY 14 (AR)



OCA/H			GROUND SPEED - KT					
ACFT CAT.	C	D	70	90	100	120	140	160
RNP 0.3	515 (415)		RATE OF DESCENT (2.8°) (FT/MIN)					
			347	446	495	594	693	792
			DISTANCE TO THRESHOLD (NM)			2.5	2	1
			ALTITUDE (FT)			900	670	370

- 1. AUTHORIZATION REQUIRED**
- 2. GNSS REQUIRED**
- 3. RF REQUIRED**
4. APPROACH NOT AUTHORIZED WHEN AIRPORT TEMPERATURE BELOW 17°C OR ABOVE 40°C
5. WBKL ALTIMETER SETTING REQUIRED.
6. PAPI AND VERTICAL PATH ANGLE NOT COINCIDENT
7. PROCEDURE REQUIRES RNP 0.3 FROM IAF'S TO RWY
8. CLIMB GRADIENT OF 3.5% TO 4000FT REQUIRED TO REACH KAPLA