

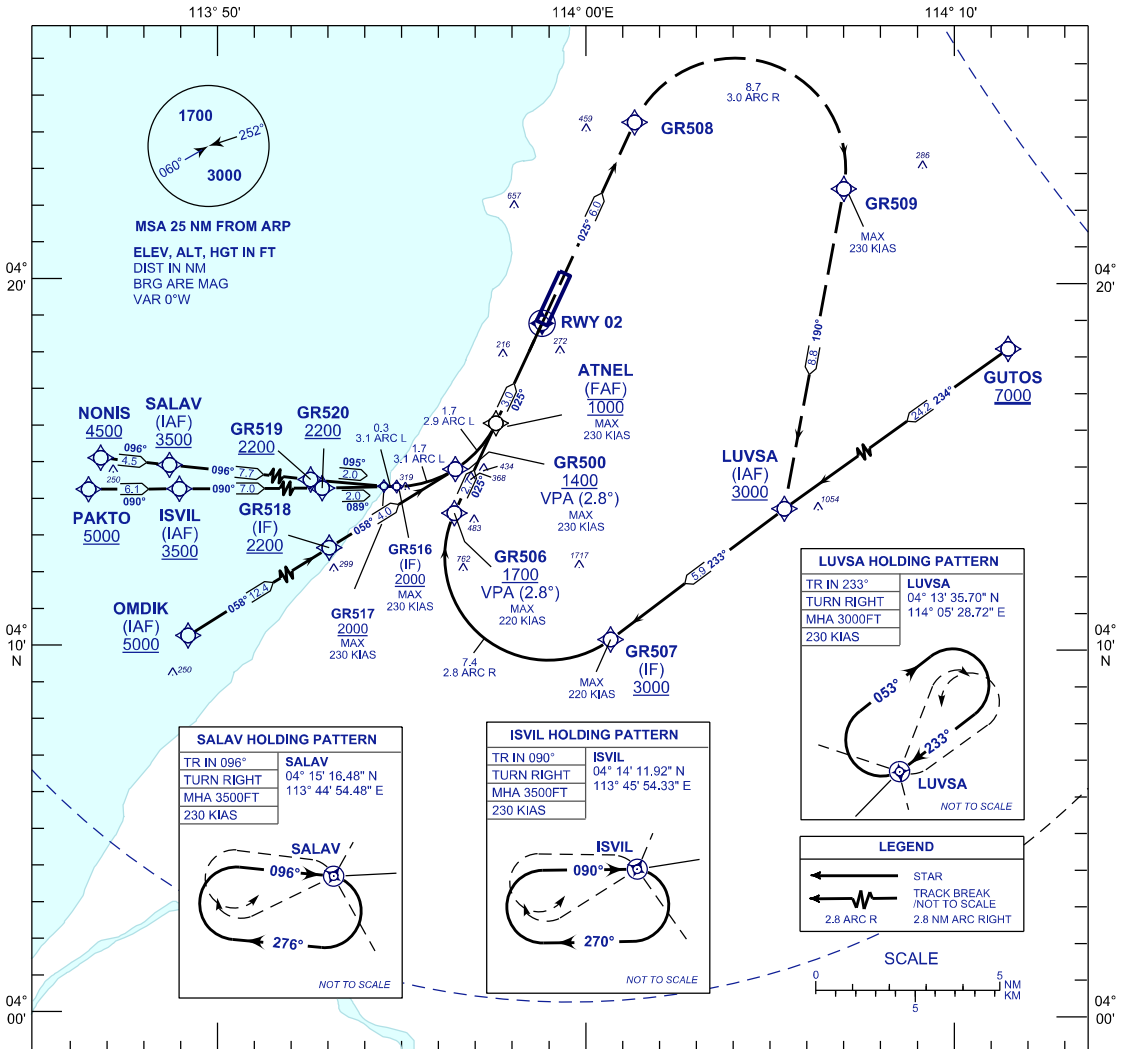
**INSTRUMENT
APPROACH
CHART - ICAO**

AERODROME ELEV 59 FT
HEIGHT RELATED TO
THR RWY 02 - ELEV 59 FT

APP	129.9 (P)
	122.70 (S)
TWR	123.30
SMC	121.9
CATIS	127.0

MIRI/MIRI (WBGR)

RNP Z RWY 02 (AR)



SALAV HOLDING PATTERN

TR IN 096°	SALAV
TURN RIGHT	04° 15' 16.48" N
MHA 3500FT	113° 44' 54.48" E
230 KIAS	

NOT TO SCALE

ISVIL HOLDING PATTERN

TR IN 090°	ISVIL
TURN RIGHT	04° 14' 11.92" N
MHA 3500FT	113° 45' 54.33" E
230 KIAS	

NOT TO SCALE

LUVSA HOLDING PATTERN

TR IN 233°	LUVSA
TURN RIGHT	04° 13' 35.70" N
MHA 3000FT	114° 05' 28.72" E
230 KIAS	

NOT TO SCALE

LEGEND

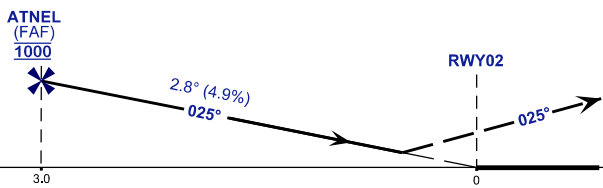
- ← STAR
- TRACK BREAK (NOT TO SCALE)
- 2.8 ARC R



VPA 2.8°
RDH 52FT

MISSED APPROACH
CLIMB TO 3000FT VIA THE RNP MISSED APPROACH
TRACK TO LUVSA OR AS DIRECTED BY ATC

TRANSITION LEVEL FL130
TRANSITION ALT 11 000



THR ELEV 59
NM TO THR 02

STRAIGHT - IN APPROACH	OCA (OCH)	GROUND SPEED - KT	70	90	100	120	140	160
CATEGORY OF AIRCRAFT	C D	RATE OF DESCENT (2.8°) (FEET/MIN)	347	446	495	594	693	792
RNP 0.3	485 (426)							
CIRCLING AND ALTERNATE N/A		DISTANCE TO THRESHOLD (NM)	3	2	1			
		ALTITUDE (FEET)	1000	670	370			

- 1. AUTHORIZATION REQUIRED
- 2. GNSS REQUIRED
- 3. RF REQUIRED
- 4. APPROACH NOT AUTHORIZED WHEN AIRPORT TEMPERATURE BELOW 19°C OR ABOVE 38°C.
- 5. WBGR ALTIMETER SETTING REQUIRED.
- 6. PAPI AND VERTICAL PATH ANGLE NOT COINCIDENT.
- 7. RNP 0.3 REQUIRED FROM IAF'S TO FAF.