

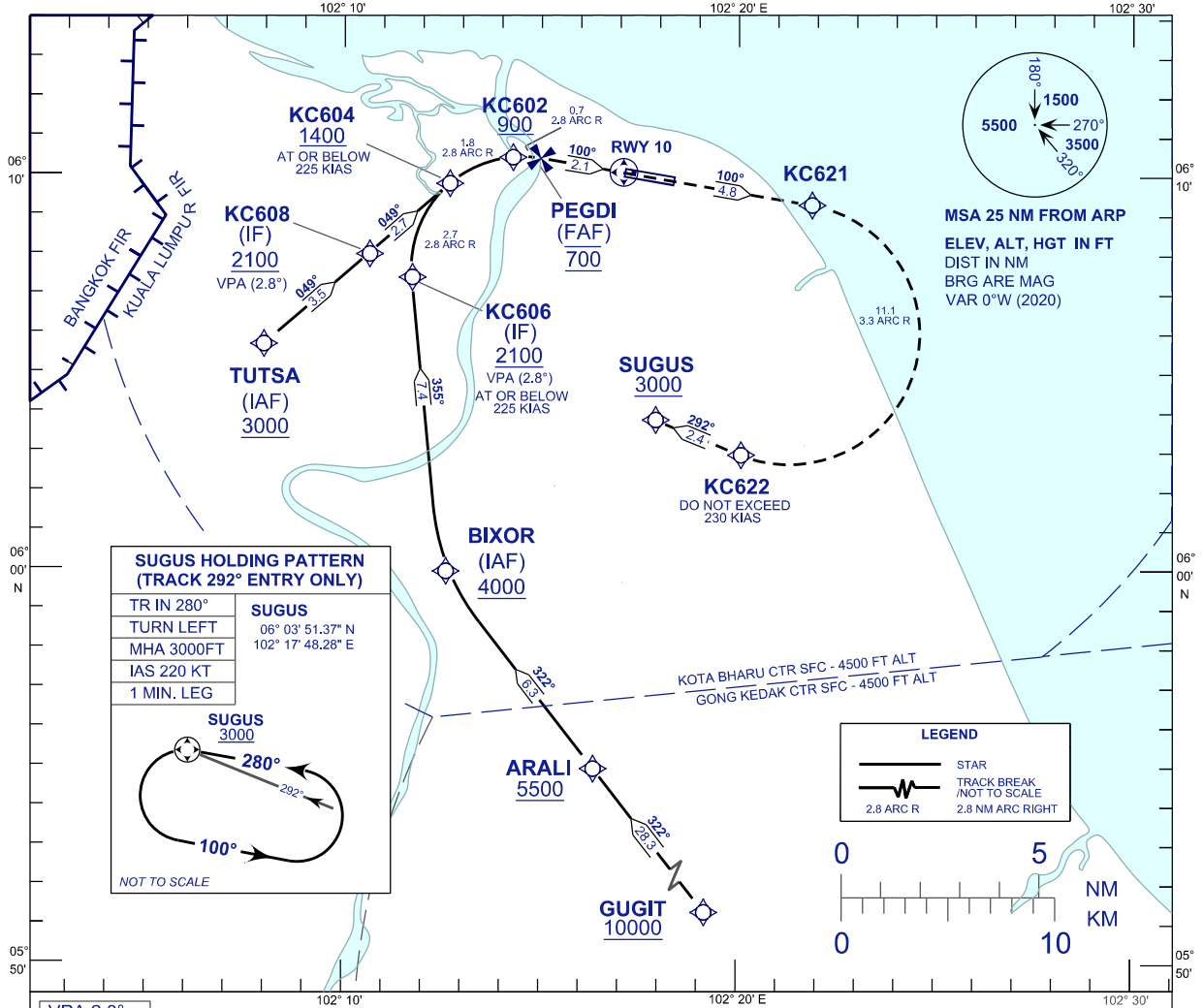
**INSTRUMENT
APPROACH
CHART - ICAO**

AERODROME ELEV 16 FT
HEIGHT RELATED TO
THR RWY 10 - ELEV 16 FT

APP 120.85, 130.3
TWR 122.5
SMC 121.6
ATIS 128.85

**KOTA BHARU/
SULTAN ISMAIL PETRA (WMKC)**

RNP Z RWY 10 (AR)



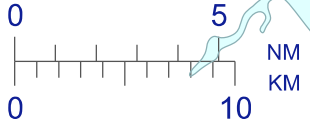
**SUGUS HOLDING PATTERN
(TRACK 292° ENTRY ONLY)**

TR IN 280°	SUGUS
TURN LEFT	06° 03' 51.37" N
MHA 3000FT	102° 17' 48.28" E
IAS 220 KT	
1 MIN. LEG	

NOT TO SCALE

LEGEND

- STAR
- TRACK BREAK /NOT TO SCALE
- 2.8 ARC R
- 2.8 NM ARC RIGHT



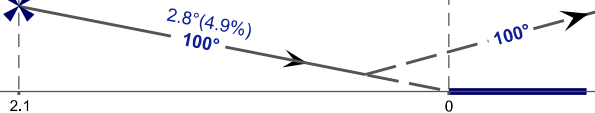
VPA 2.8°
RDH 50 FT

MISSED APPROACH

CLIMB TO 3000 FT ON RNP MISSED APPROACH TRACK
TO SUGUS OR AS DIRECTED BY ATC.

PEGDI
(FAF)
700

RWY 10



THR ELEV 16
NM FROM THR

TRANSITION LEVEL FL130
TRANSITION ALT 11000 FT

VSS PENETRATIONS FROM
400 M TO 1300 M PRIOR
TO THR.

STRAIGHT-IN APPROACH	OCA (OCH)	
CATEGORY OF AIRCRAFT	C	D
RNP (0.30)	445 (429)	
CIRCLING AND ALTERNATE N/A		

AUTHORIZATION REQUIRED

NOTES:

- 1) APPROACH NOT AUTHORIZED WHEN AIRPORT TEMPERATURE BELOW 18°C OR ABOVE 39°C.
- 2) RF REQUIRED.
- 3) WMKC ALTIMETER SETTING REQUIRED.
- 4) GNSS REQUIRED.
- 5) PAPI AND VERTICAL PATH ANGLE NOT COINCIDENT.
- 6) RNP 1.0 REQUIRED FROM GUGIT TO IAF.
- 7) RNP 0.3 REQUIRED FROM IAF'S TO FAF.
- 8) DUE TO GONG KEDAK CTR, MAINTAIN 4500 FT OR ABOVE UNTIL 4.5 NM TO BIXOR.