

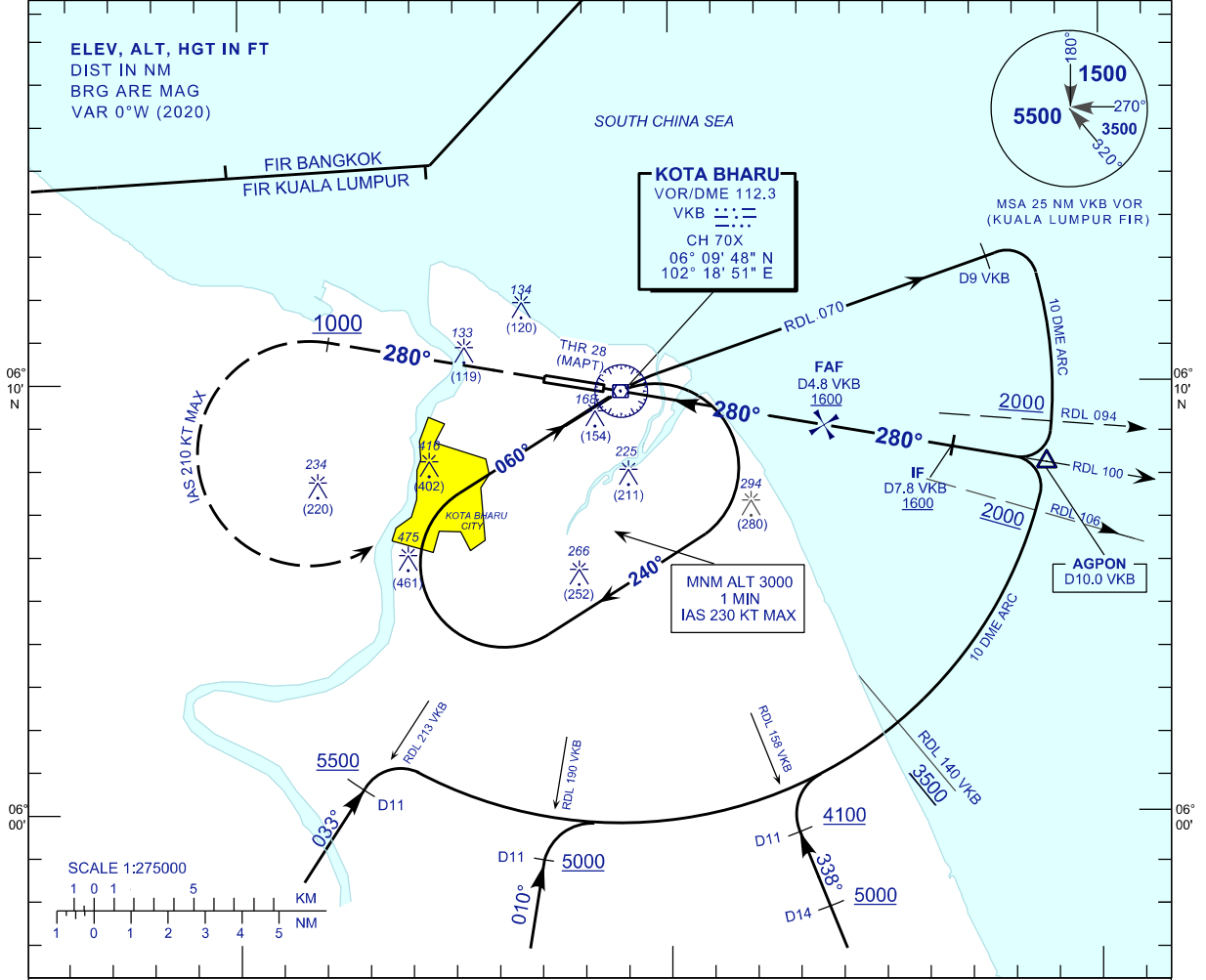
**INSTRUMENT  
APPROACH  
CHART - ICAO**

**AERODROME ELEV 16 FT**  
HEIGHT RELATED TO  
THR RWY28 - ELEV 13 FT

APP 120.85,130.3  
TWR 122.5  
SMC 121.6  
ATIS 128.85

**KOTA BHARU /  
SULTAN ISMAIL PETRA (WMKC)  
RWY28**

VOR Z  
(10 DME ARC)

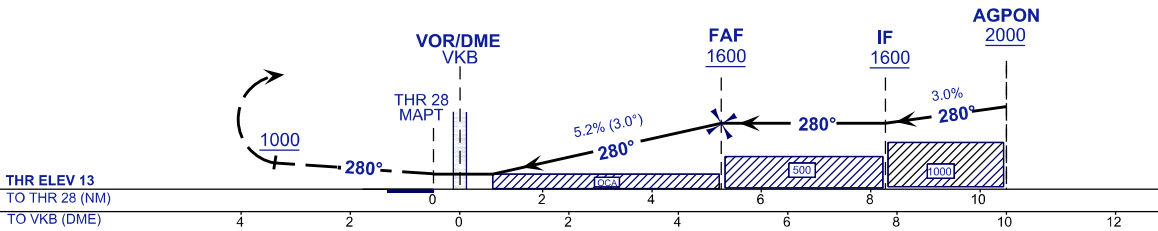


**MISSED APPROACH**

TRACK 280°, AT 1000 FT OR ABOVE TURN LEFT TRACK  
DIRECT TO VKB VOR HOLD CLIMB 3000 FT TO HOLD  
OR AS DIRECTED BY ATC.

TRANSITION ALT 11000

TCH 50 FT



OCA/H	A	B	C	D	DME VKB	4.8	4.0	3.0	2.0	1.1
VOR/DME	430 (414)				ALTITUDE	1600	1262	944	625	430
					GS(KT)	80	100	120	140	160
					FAF - RWY28(4.8 NM)	3:57	3:10	2:38	2:16	1:59
					RATE OF DESCEND	380	480	570	670	770

CHANGES : MAGNETIC VARIATION