

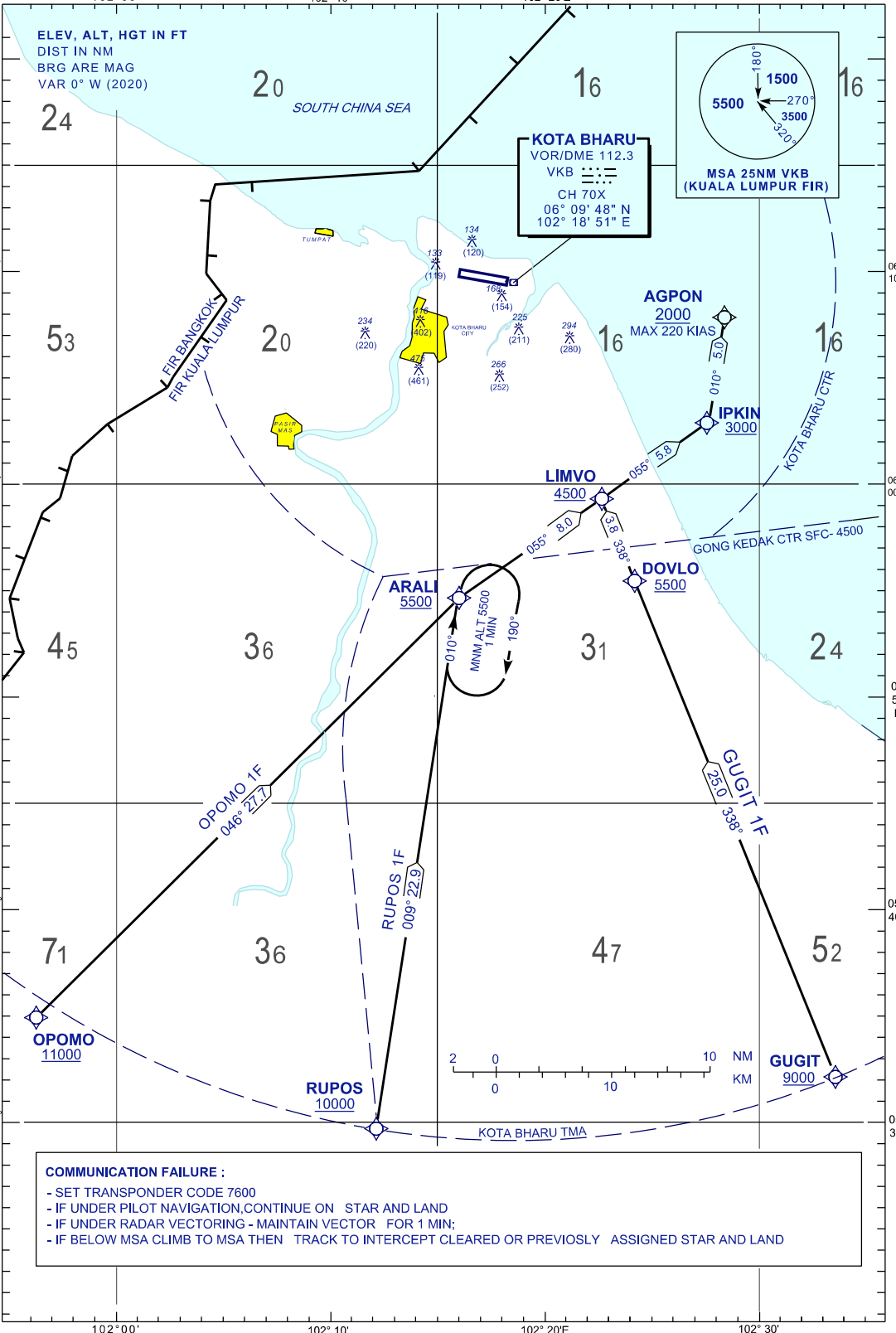
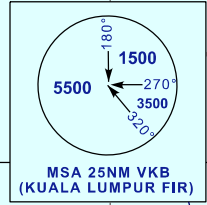
**STANDARD ARRIVAL CHART
INSTRUMENT (STAR) - ICAO**

APP	120.85,130.3
TWR	122.5
SMC	121.6
ATIS	128.85

**KOTA BHARU/
SULTAN ISMAIL PETRA (WMKC)
RNAV (GNSS) RWY 28**

GUGIT 1F
RUPOS 1F
OPOMO 1F

TRANSITION ALTITUDE
11 000 FT



COMMUNICATION FAILURE :

- SET TRANSPONDER CODE 7600
- IF UNDER PILOT NAVIGATION, CONTINUE ON STAR AND LAND
- IF UNDER RADAR VECTORED - MAINTAIN VECTOR FOR 1 MIN;
- IF BELOW MSA CLIMB TO MSA THEN TRACK TO INTERCEPT CLEARED OR PREVIOUSLY ASSIGNED STAR AND LAND