

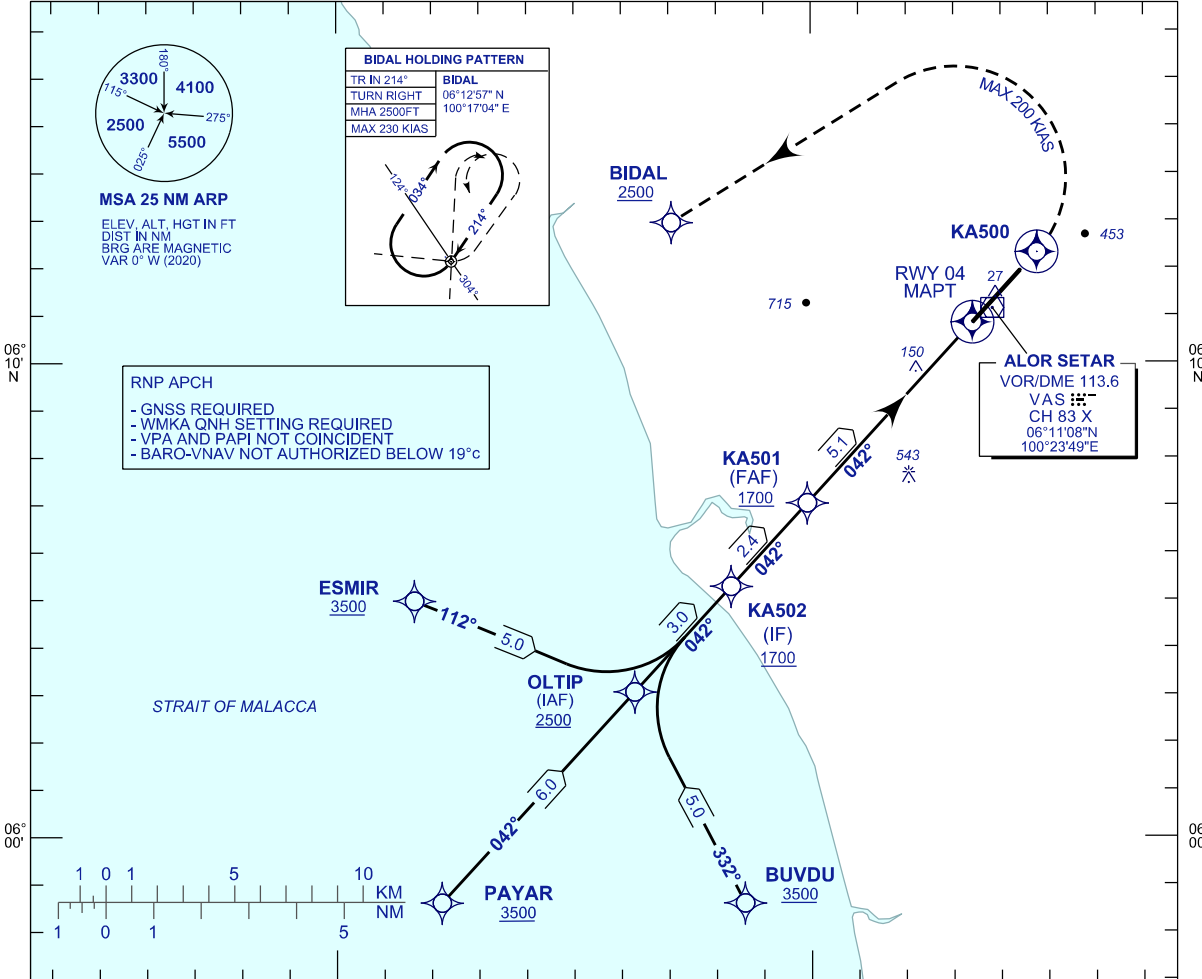
**INSTRUMENT
APPROACH
CHART - ICAO**

AERODROME ELEV 15 FT
HEIGHT RELATED TO
THR RWY 04 - ELEV 12 FT

TWR/APP	122.3
	121.5
	258.2
SMC	121.6
ATIS	128.65

**ALOR SETAR/
SULTAN ABDUL HALIM (WMKA)**

RNP Y RWY 04



BIDAL HOLDING PATTERN

TR IN 214°	BIDAL
TURN RIGHT	06°12'57" N
MHA 2500FT	100°17'04" E
MAX 230 KIAS	

- RNP APCH**
- GNSS REQUIRED
 - WMKA QNH SETTING REQUIRED
 - VPA AND PAPI NOT COINCIDENT
 - BARO-VNAV NOT AUTHORIZED BELOW 19°C

MSA 25 NM ARP
ELEV. ALT. HGT IN FT
DIST IN NM
BRG ARE MAGNETIC
VAR 0° W (2020)

MISSED APPROACH

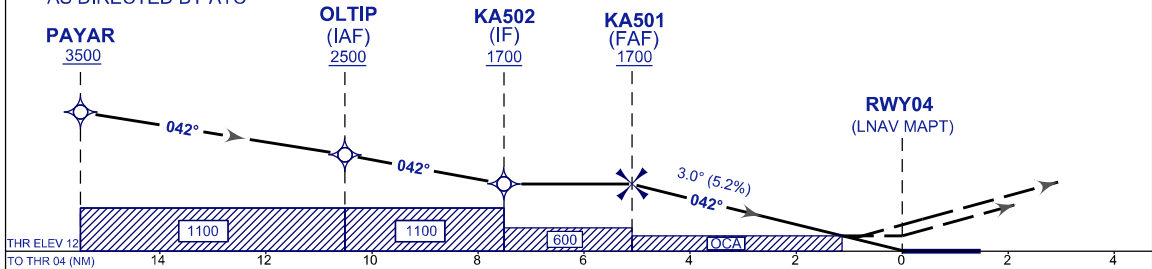
CLIMB ON TR 042° TO 2500 FT. ON PASSING KA500
TURN LEFT DIRECT TO BIDAL AND HOLD OR
AS DIRECTED BY ATC

CAUTION

MISSED APPROACH TURNED SPEED
MAX 200 KIAS

TRANSITION ALT 11000

RDH 50 FT



OCA (OCH)	A	B	C	D
LNAV	400 (388)			
LNAV / VNAV	300 (288)	309 (297)	323 (311)	337 (325)

DIST THR/RWY 04	NM	5.1	5.0	4.0	3.0	2.0	1.0
ALTITUDE	FT	1700	1655	1251	954	657	360

GS	KT	80	100	120	140	160	180
FAF - RWY04 (5.1NM)	MIN:SEC	3:52	3:06	2:35	2:13	1:56	1:43
RATE OF DESCEND (318.4 FT/NM)	FT/MIN	420	530	630	740	840	950

CHANGES : MAGNETIC VARIATION.