

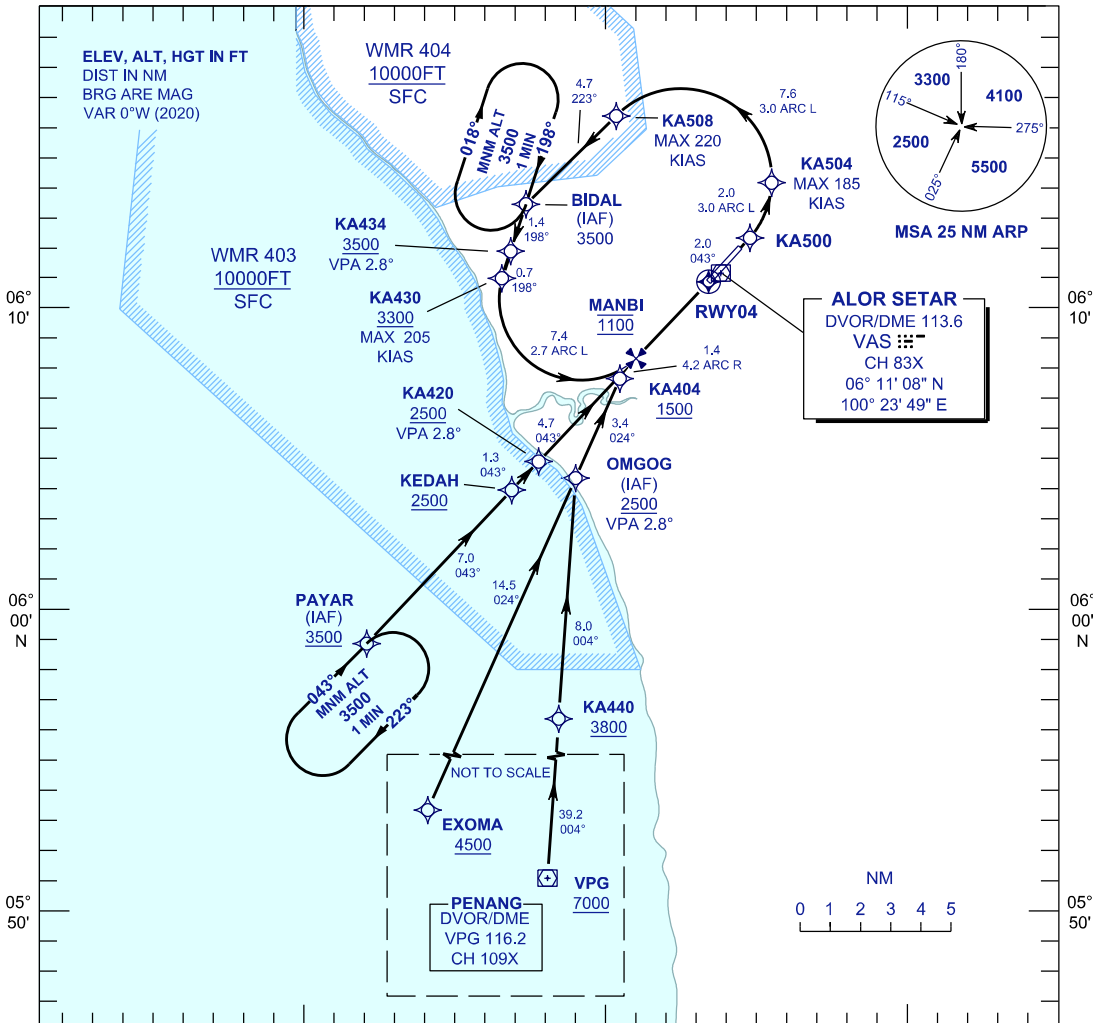
**INSTRUMENT
APPROACH
CHART - ICAO**

**AERODROME ELEV 15 FT
HEIGHTS RELATED TO
THR RWY 04 - ELEV 12 FT**

APP/TWR	122.3, 258.2, 121.5
TRAINING	129.1
SMC	121.6
ATIS	128.65

**ALOR SETAR/
SULTAN ABDUL HALIM (WMKA)**

RNP Z RWY 04 (AR)



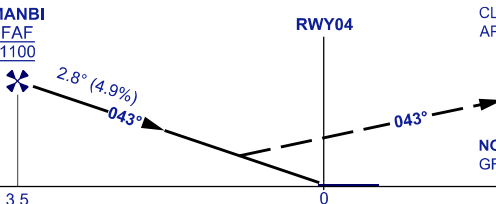
TRANSITION LEVEL FL 130

TRANSITION ALT 11 000

**MANBI
FAF
1100**

VPA 2.8°
RDH 50 FT
THR ELEV 12

NM FROM THR



OCA/H	
ACFT CAT.	C D
RNP 0.3	430 (418) / 2.3 KM

GROUND SPEED - KT	70	90	100	120	140	160
RATE OF DESCENT (2.8°) (FEET/MIN)	347	446	495	594	693	792

DISTANCE TO THRESHOLD (NM)	3.5	3	2	1
ALTITUDE (FEET)	1100	960	670	370

- 1. AUTHORIZATION REQUIRED**
- 2. GNSS REQUIRED**
- 3. RF REQUIRED**
- 4. APPROACH NOT AUTHORIZED WHEN AIRPORT TEMPERATURE BELOW 19°C OR ABOVE 40°C
- 5. WMKA ALTIMETER SETTING REQUIRED.
- 6. PAPI AND VERTICAL PATH ANGLE NOT COINCIDENT
- 7. PROCEDURE REQUIRES RNP 0.3 FROM IAFS TO KA504
- 8. TOGA TO NAV REQUIRED
- 9. CLIMB GRADIENT OF 3.4% TO 3500 FT REQUIRED TO REACH BIDAL

CHANGES : MAGNETIC VARIATION.