

**INSTRUMENT
APPROACH
CHART - ICAO**

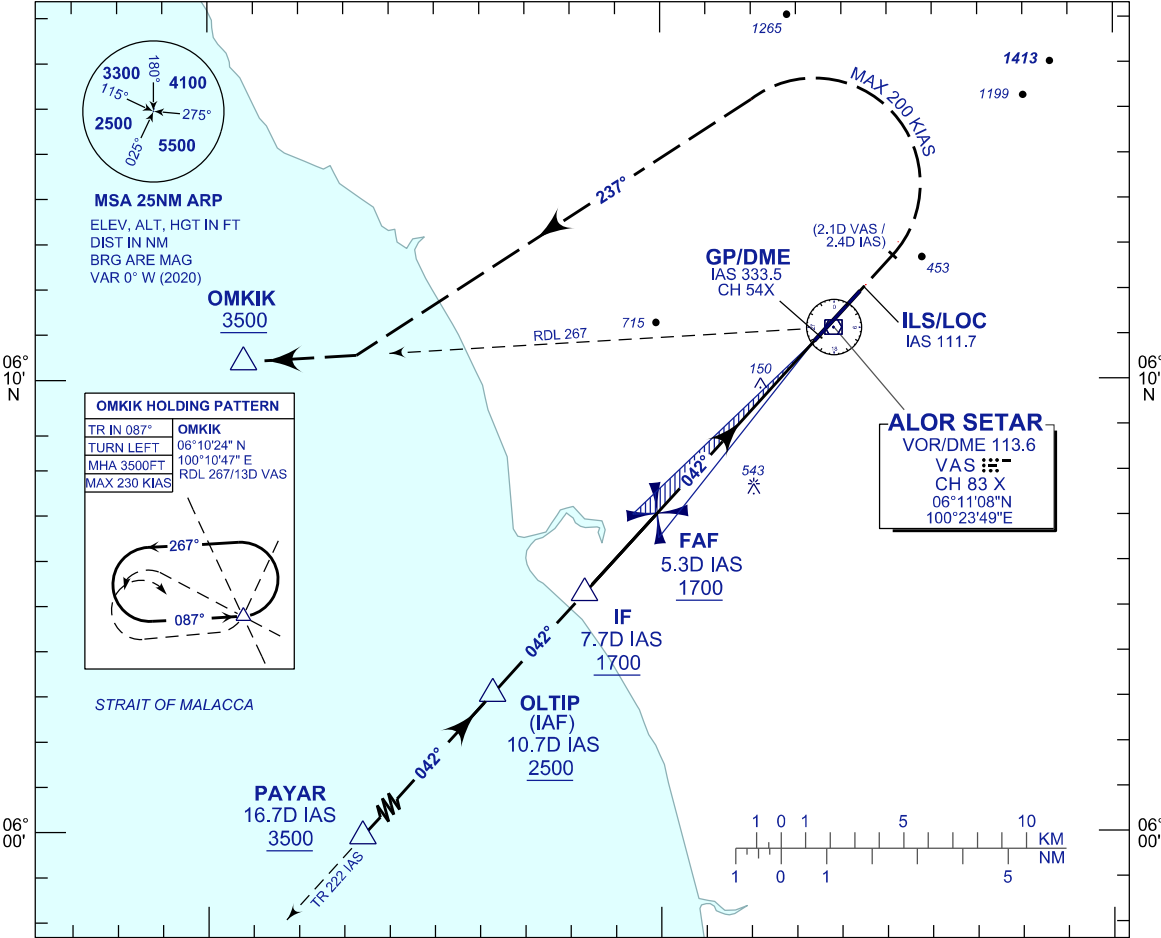
**AERODROME ELEV 15 FT
HEIGHTS RELATED TO
THR RWY 04 - ELEV 12 FT**

| | |
|---------|--------|
| TWR/APP | 122.3 |
| | 121.5 |
| | 258.2 |
| SMC | 121.6 |
| ATIS | 128.65 |

**ALOR SETAR/
SULTAN ABDUL HALIM (WMKA)**

ILS Z OR LOC Z RWY 04

100°10'



MISSED APPROACH

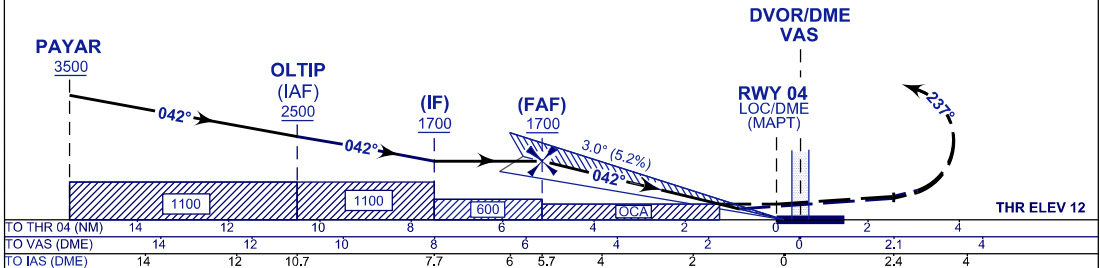
CLIMB ON TR 042° TO 3500 FT. ON PASSING 2.1 DME VAS OR 2.4 DME IAS TURN LEFT TR 237° TO INTERCEPT RDL 267 TO OMKIK HOLD OR AS DIRECTED BY ATC

CAUTION

MISSED APPROACH
TURNED SPEED MAX 200 KIAS

TRANSITION ALT 11000

ILS RDH 50 FT



| | | | | |
|-----------------|-----------|-----------|-----------|-----------|
| OCA (OCH) | A | B | C | D |
| ILS/DME (CAT I) | 299 (287) | 311 (299) | 318 (306) | 328 (316) |
| LOC/DME | 460 (448) | | | |

| | | | | | | | |
|-----------------|----|------|------|------|-----|-----|-----|
| DIST IAS DME | NM | 5.3 | 5.0 | 4.0 | 3.0 | 2.0 | 1.3 |
| DIST THR/RWY 04 | NM | 5.1 | 4.8 | 3.8 | 2.8 | 1.8 | 1.1 |
| ALTITUDE | FT | 1700 | 1605 | 1286 | 968 | 649 | 426 |

| | | | | | | | |
|-------------------------------|---------|------|------|------|------|------|------|
| GS | KT | 80 | 100 | 120 | 140 | 160 | 180 |
| FAF - RWY04 (5.1NM) | MIN:SEC | 3:52 | 3:06 | 2:35 | 2:13 | 1:56 | 1:43 |
| RATE OF DESCEND (318.6 FT/NM) | FT/MIN | 420 | 530 | 630 | 740 | 840 | 950 |

CHANGES : MAGNETIC VARIATION.