

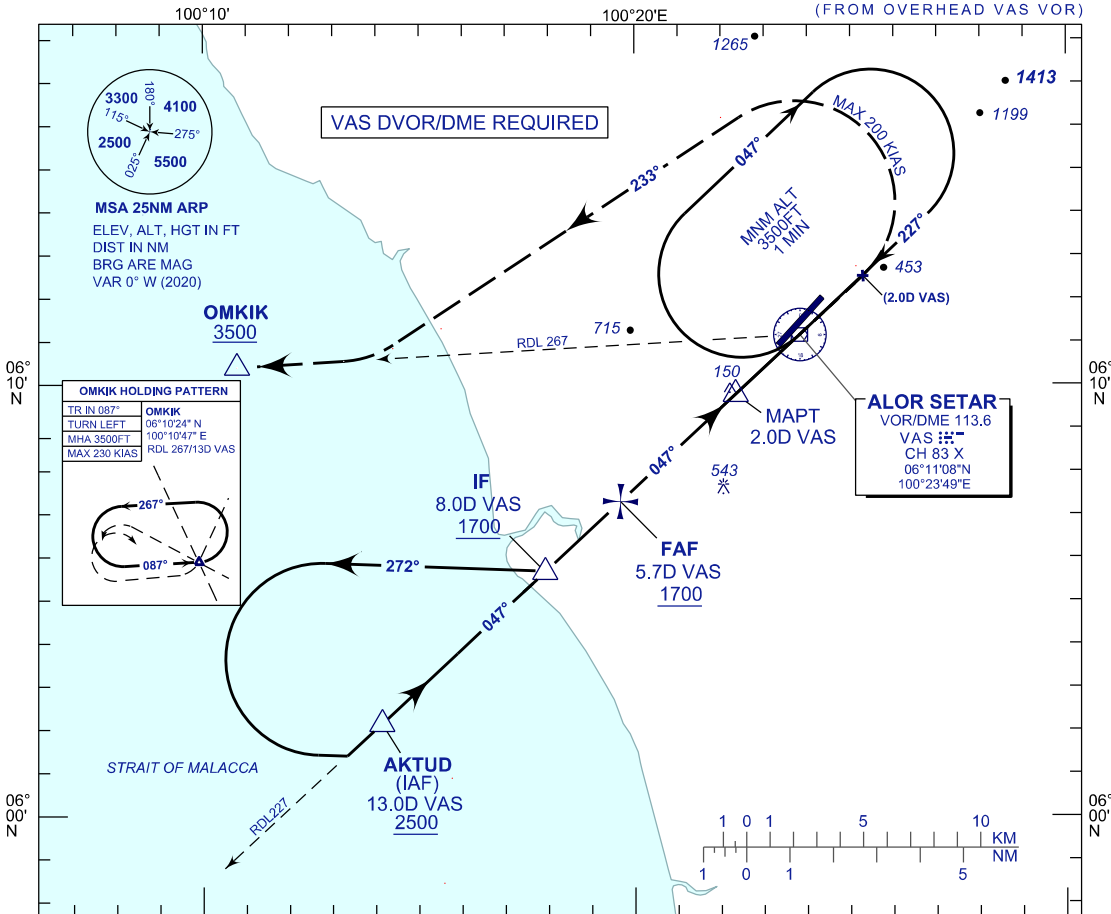
INSTRUMENT APPROACH CHART - ICAO

AERODROME ELEV 15 FT
HEIGHTS RELATED TO
THR RWY 04 - ELEV 12 FT

TWR/APP 122.3
121.5
258.2
SMC 121.6
ATIS 128.65

**ALOR SETAR/
SULTAN ABDUL HALIM (WMKA)**
VOR Y RWY 04

(FROM OVERHEAD VAS VOR)

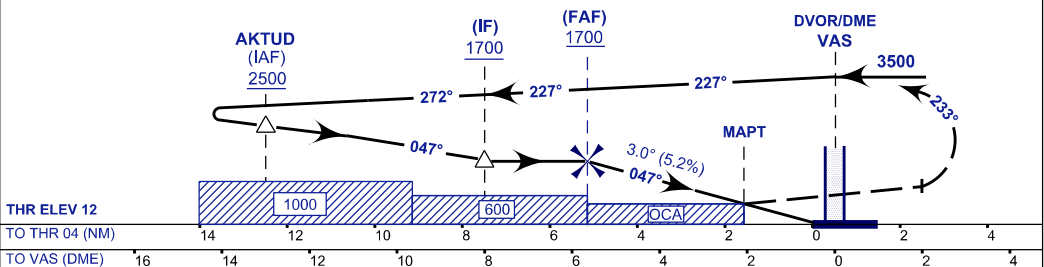


MISSED APPROACH

CLIMB ON TR 047° TO 3500 FT. ON PASSING 2.0 DME VAS
TURN LEFT TR 233° TO INTERCEPT RDL 267 VAS
TO OMKIK HOLD OR AS DIRECTED BY ATC

CAUTION

MISSED APPROACH TURNED SPEED
MAX 200 KIAS



OCA (OCH)	A	B	C	D
VOR/DME	560 (548)			

DME VAS	NM	5.7	5.0	4.0	3.0	2.0
DIST THR/RWY 04	NM	5.1	4.5	3.5	2.5	1.5
ALTITUDE	FT	1700	1496	1178	859	540

GS	KT	80	100	120	140	160	180
FAF - RWY04 (5.1NM)	MIN:SEC	3:52	3:06	2:35	2:13	1:56	1:43
RATE OF DESCEND (318.6 FT/NM)	FT/MIN	420	530	630	740	840	950

CHANGES : MAGNETIC VARIATION.