

STANDARD DEPARTURE CHART INSTRUMENT (SID) - ICAO

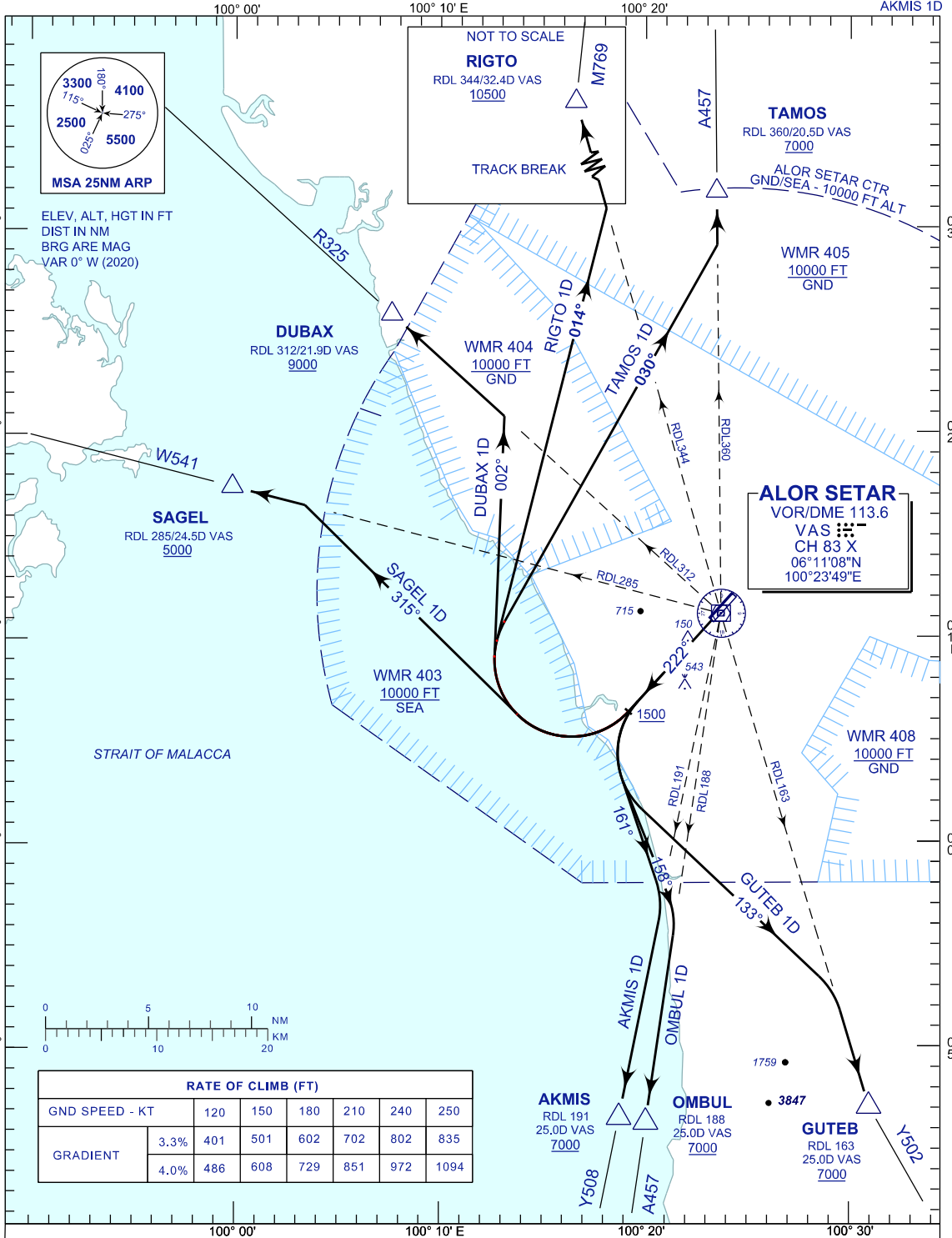
TRANSITION ALTITUDE
11000 FT

TWR/APP 122.3, 258.2
121.5
TRAINING 129.1
SMC 121.6
ATIS 128.65

ALOR SETAR/ SULTAN ABDUL HALIM (WMKA)

RWY 22

TAMOS 1D RIGTO 1D DUBAX 1D
SAGEL 1D GUTEB 1D OMBUL 1D
AKMIS 1D



COMMUNICATION FAILURE :

- SQUAWK 7600
- IF UNDER PILOT NAVIGATION, MAINTAIN LAST ASSIGNED LEVEL FOR 3 MINUTES, IF NO ONWARD CLEARANCE IS RECEIVED. SUBSEQUENTLY CLIMB TO COMPLY WITH SID.
- IF UNDER RADAR VECTORED : MAINTAIN VECTOR FOR 2 MINUTES, IF BELOW MSA, CLIMB TO MSA, THEN TRACK TO INTERCEPT CLEARED OR PREVIOUSLY ASSIGNED SID TO DESTINATION.

CHANGES: MAGNETIC VARIATION.