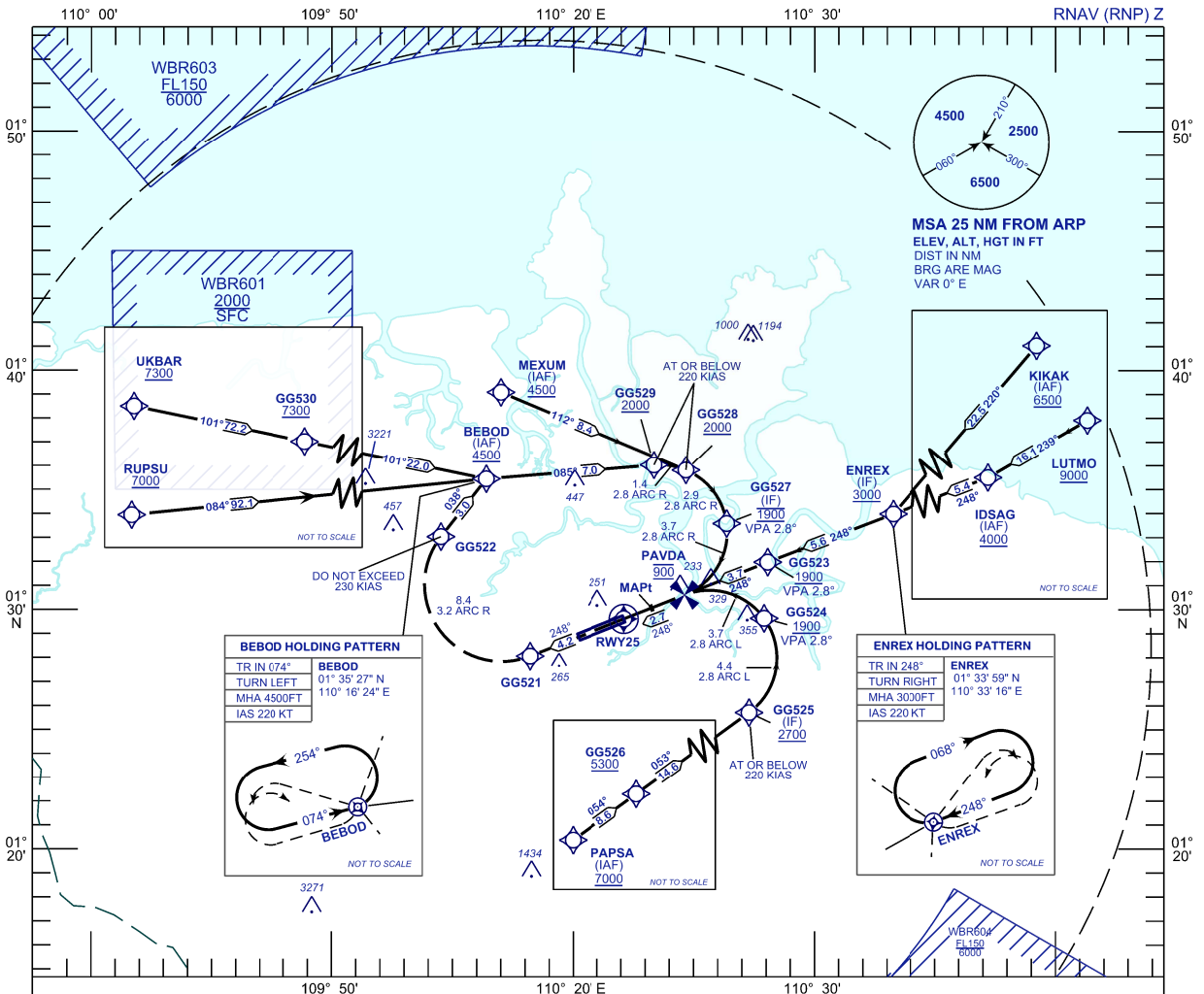


**INSTRUMENT
APPROACH
CHART - ICAO**

AERODROME ELEV 88 FT
HEIGHT RELATED TO
THR RWY 25 ELEV - 42 FT

APP 120.2 123.85	TWR 118.1 121.7	SMC 121.9	ATIS 128.4
------------------------	-----------------------	--------------	---------------

**KUCHING/KUCHING
INTERNATIONAL AIRPORT (WBGG)
RWY 25**

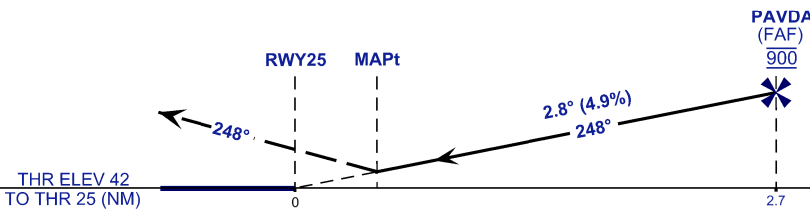


VPA 2.8°
RDH 54FT

MISSED APPROACH

CLIMB TO 4500FT VIA THE RNAV (RNP) MISSED APPROACH TRACK TO BEBOD OR AS DIRECTED BY ATC

TRANSITION LEVEL FL130
TRANSITION ALT 11 000



STRAIGHT - IN APPROACH	OCA (OCH)	
CATEGORY OF AIRCRAFT	C	D
RNP (0.30)	465 (423)	
CIRCLING AND ALTERNATE N/A		

AUTHORIZATION REQUIRED

NOTES

- 1) GNSS REQUIRED.
- 2) RF REQUIRED.
- 3) APPROACH NOT AUTHORIZED WHEN AIRPORT TEMPERATURE BELOW 19°C OR ABOVE 40°C.
- 4) W3GG ALTIMETER SETTING REQUIRED.
- 5) PAPI AND VERTICAL PATH ANGLE NOT COINCIDENT.
- 6) CLIMB GRADIENT 4.2% REQUIRED TO REACH BEBOD AT 4500.
- 7) RNP 1.0 REQUIRED TO BEBOD, ENREX, AND GG526
- 8) RNP 0.30 FROM BEBOD, ENREX, GG526 AND MEXUM TO THR.

DISTANCE IN NM. BEARING ARE MAGNETIC. ELEVATION IN FEET AMSL.