

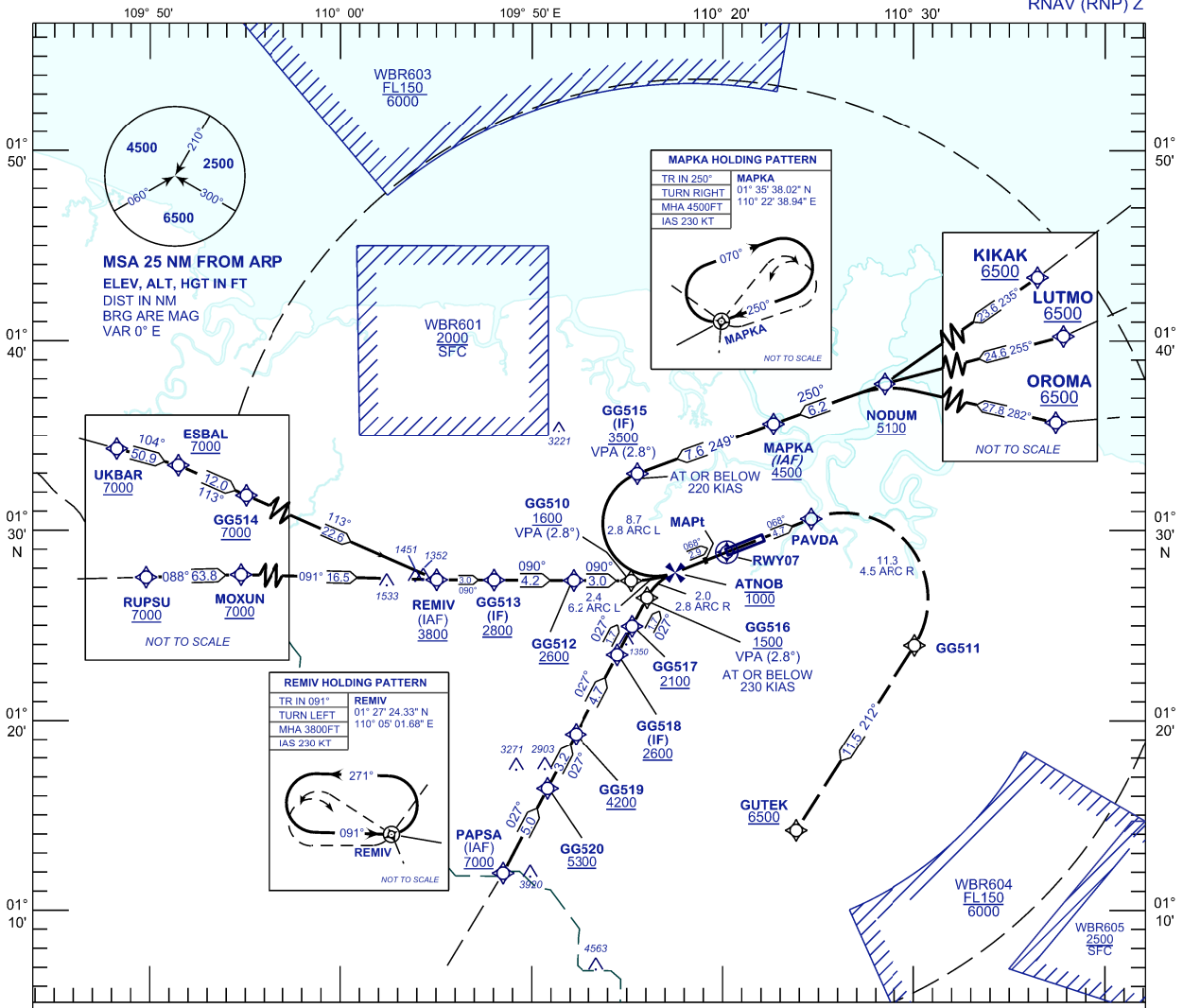
**INSTRUMENT
APPROACH
CHART - ICAO**

AERODROME ELEV 88 FT
HEIGHT RELATED TO
THR RWY 07 - ELEV 88 FT

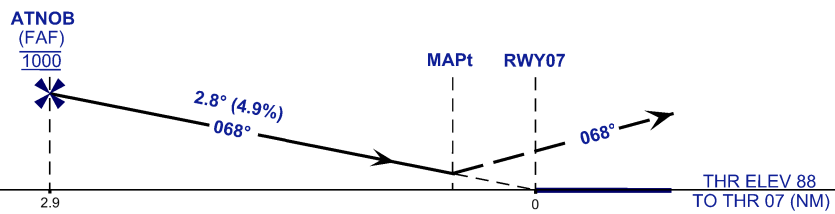
APP 120.2 123.85	TWR 118.1 121.7	SMC 121.9	ATIS 128.4
------------------------	-----------------------	--------------	---------------

**KUCHING/KUCHING
INTERNATIONAL AIRPORT (WBGG)
RWY 07**

RNAV (RNP) Z



VPA 2.8°
RDH 50FT **MISSED APPROACH**
CLIMB TO 6500FT VIA THE RNAV (RNP) MISSED APCH
TRACK TO GUTEK OR AS DIRECTED BY ATC **TRANSITION LEVEL FL130**
TRANSITION ALT 11 000



STRAIGHT - IN APPROACH	OCA (OCH)
CATEGORY OF AIRCRAFT	C D
RNP (0.30)	495 (407)
CIRCLING AND ALTERNATE N/A	

AUTHORIZATION REQUIRED

NOTES

- 1) GNSS REQUIRED.
 - 2) RF REQUIRED.
 - 3) APPROACH NOT AUTHORIZED WHEN AIRPORT TEMPERATURE BELOW 19°C OR ABOVE 40°C.
 - 4) WBGG ALTIMETER SETTING REQUIRED.
 - 5) PAPI AND VERTICAL PATH ANGLE NOT COINCIDENT.
 - 6) CLIMB GRADIENT 3.6% REQUIRED TO REACH GUTEK AT 6500.
 - 7) RNP 1.0 REQUIRED TO GG520 MAPKA, AND REMIV
 - 8) RNP 0.30 REQUIRED FROM GG520, MAPKA AND REMIV TO RWY.
- DISTANCE IN NM. BEARING ARE MAGNETIC. ELEVATION IN FEET AMSL.