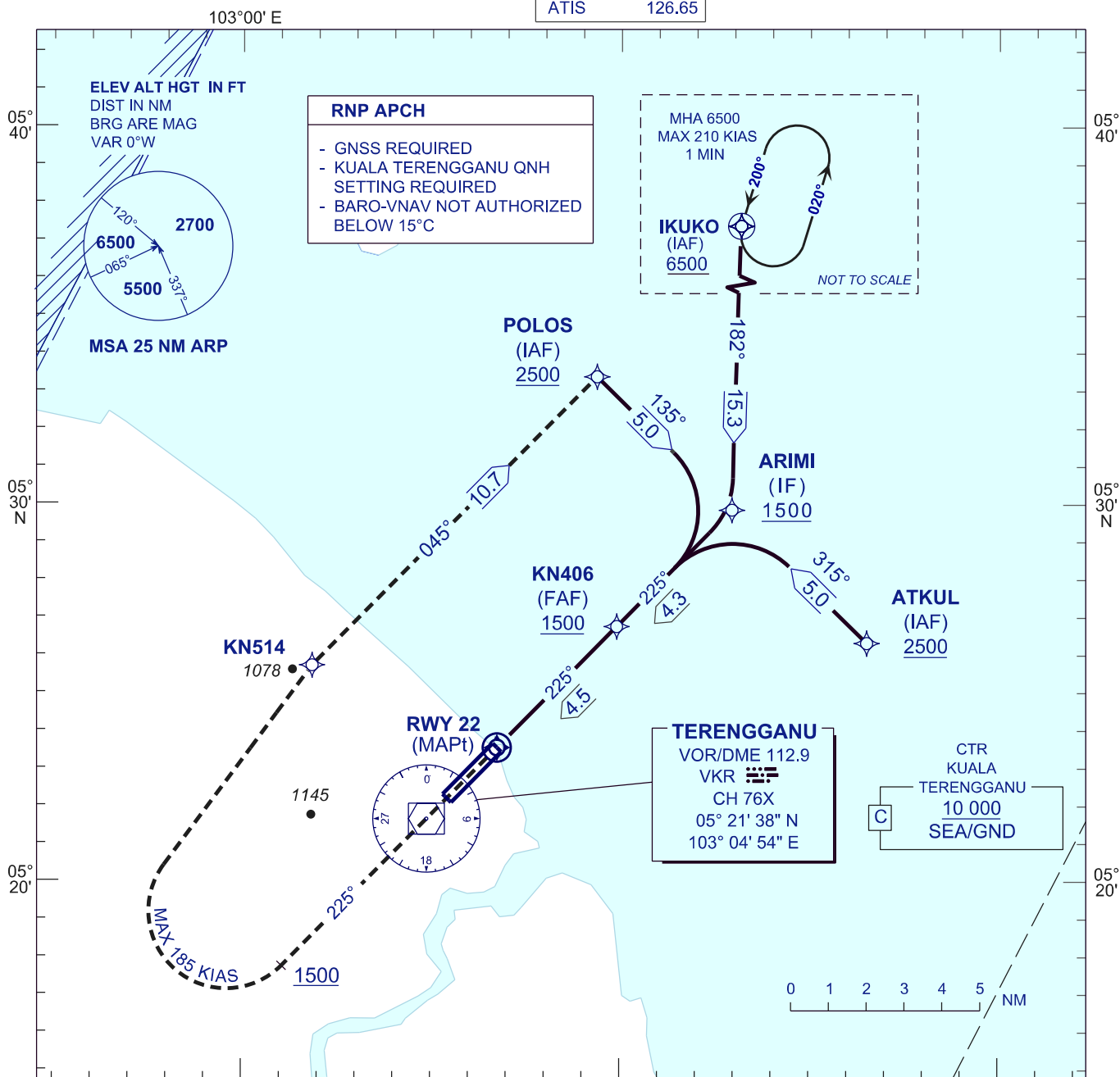


**INSTRUMENT
APPROACH
CHART - ICAO**

AERODROME ELEV 21 FT
HEIGHT RELATED TO
THR RWY 22 - ELEV 20 FT

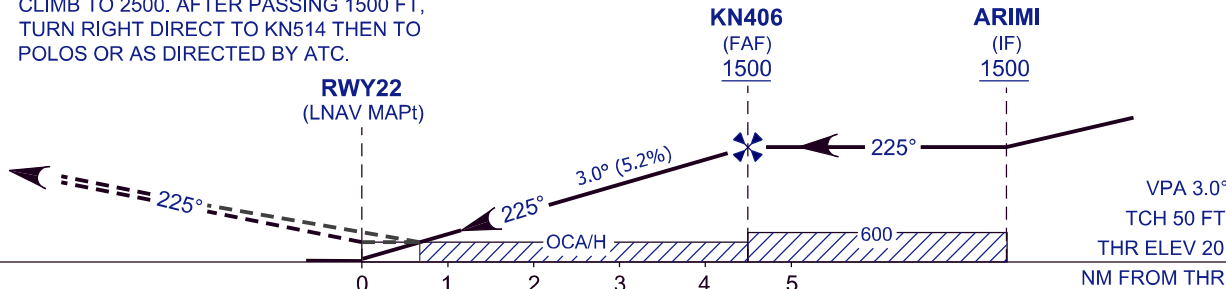
APP	123.6 235.32 121.5
TWR	119.05
SMC	121.6
ATIS	126.65

**KUALA TERENGGANU/
SULTAN MAHMUD (WMKN)
RNAV(GNSS) Y RWY 22**



MISSED APPROACH
CLIMB TO 2500. AFTER PASSING 1500 FT,
TURN RIGHT DIRECT TO KN514 THEN TO
POLOS OR AS DIRECTED BY ATC.

TRANSITION LEVEL FL 130
TRANSITION ALT 11000



		OCA/H			
ACFT CAT.		A	B	C	D
STRAIGHT IN APPROACH	LNAV	460 (440)			
	LNAV/VNAV	365 (345)			

DISTANCE TO THRESHOLD (NM)	4.5	4.0	3.0	2.0	1.0
ALTITUDE (FT)	1500	1344	1025	707	385