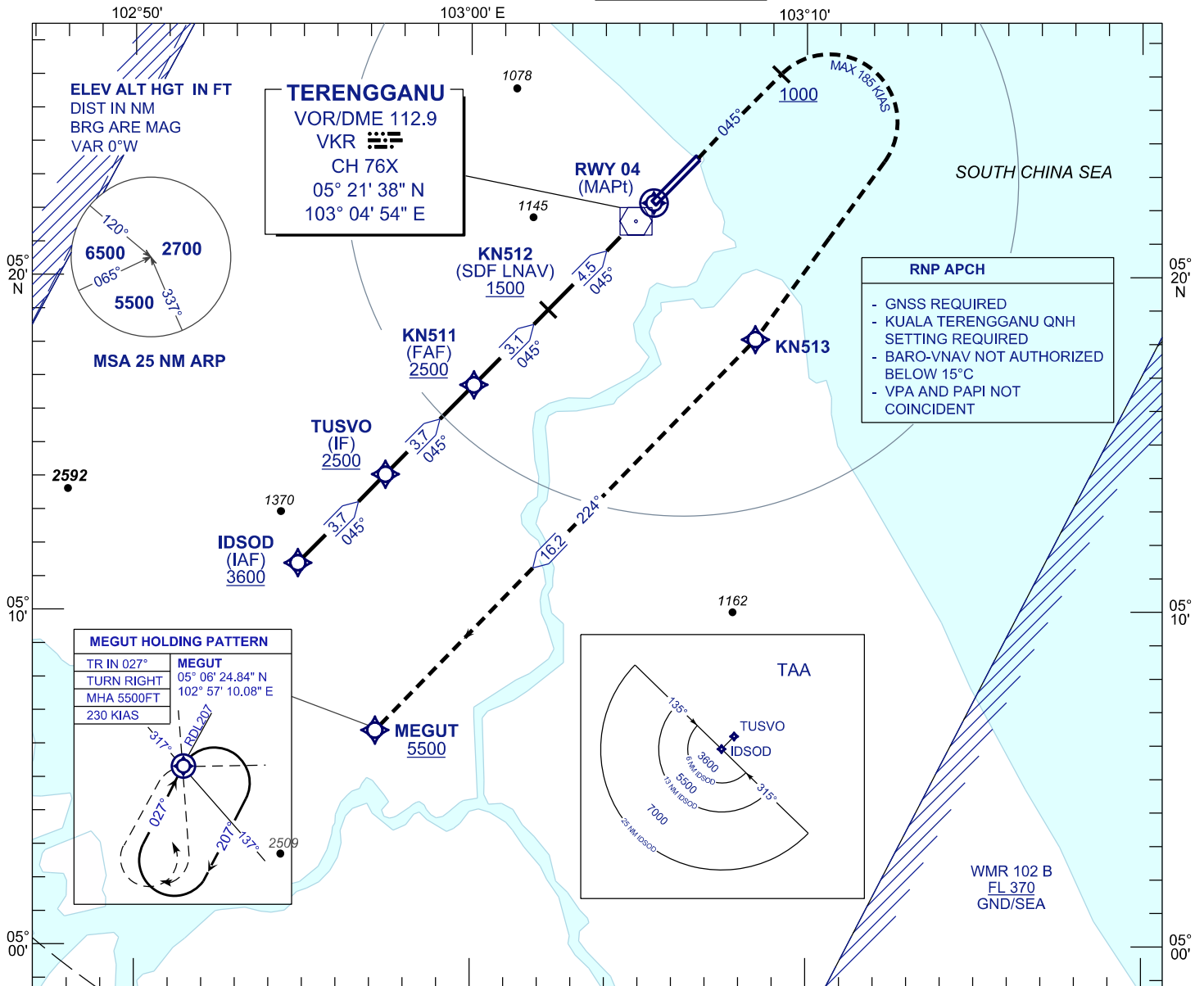


INSTRUMENT APPROACH CHART - ICAO

AERODROME ELEV 21 FT
HEIGHT RELATED TO
THR RWY 04 - ELEV 19 FT

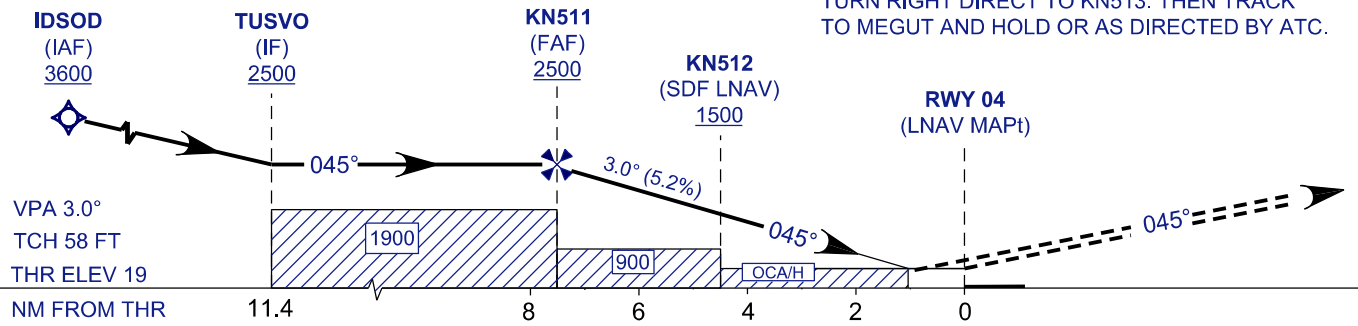
APP	123.6
	235.32
	121.5
TWR	119.05
SMC	121.6
ATIS	126.65

KUALA TERENGGANU/ SULTAN MAHMUD (WMKN) RNAV (GNSS) Y RWY 04



TRANSITION LEVEL FL 130
TRANSITION ALT 11000

MISSED APPROACH
CLIMB TO 5500 FT, AFTER PASSING 1000 FT
TURN RIGHT DIRECT TO KN513. THEN TRACK
TO MEGUT AND HOLD OR AS DIRECTED BY ATC.



OCA/H					
ACFT CAT.	A	B	C	D	
STRAIGHT IN APPROACH	LNAV	450 (431)			
	LNAV/VNAV	425 (406)			

DISTANCE TO THRESHOLD (NM)	7.6	7.0	6.0	5.0	4.0	3.0	2.0	1.0
ALTITUDE (FT)	2500	2307	1988	1670	1351	1033	714	396