

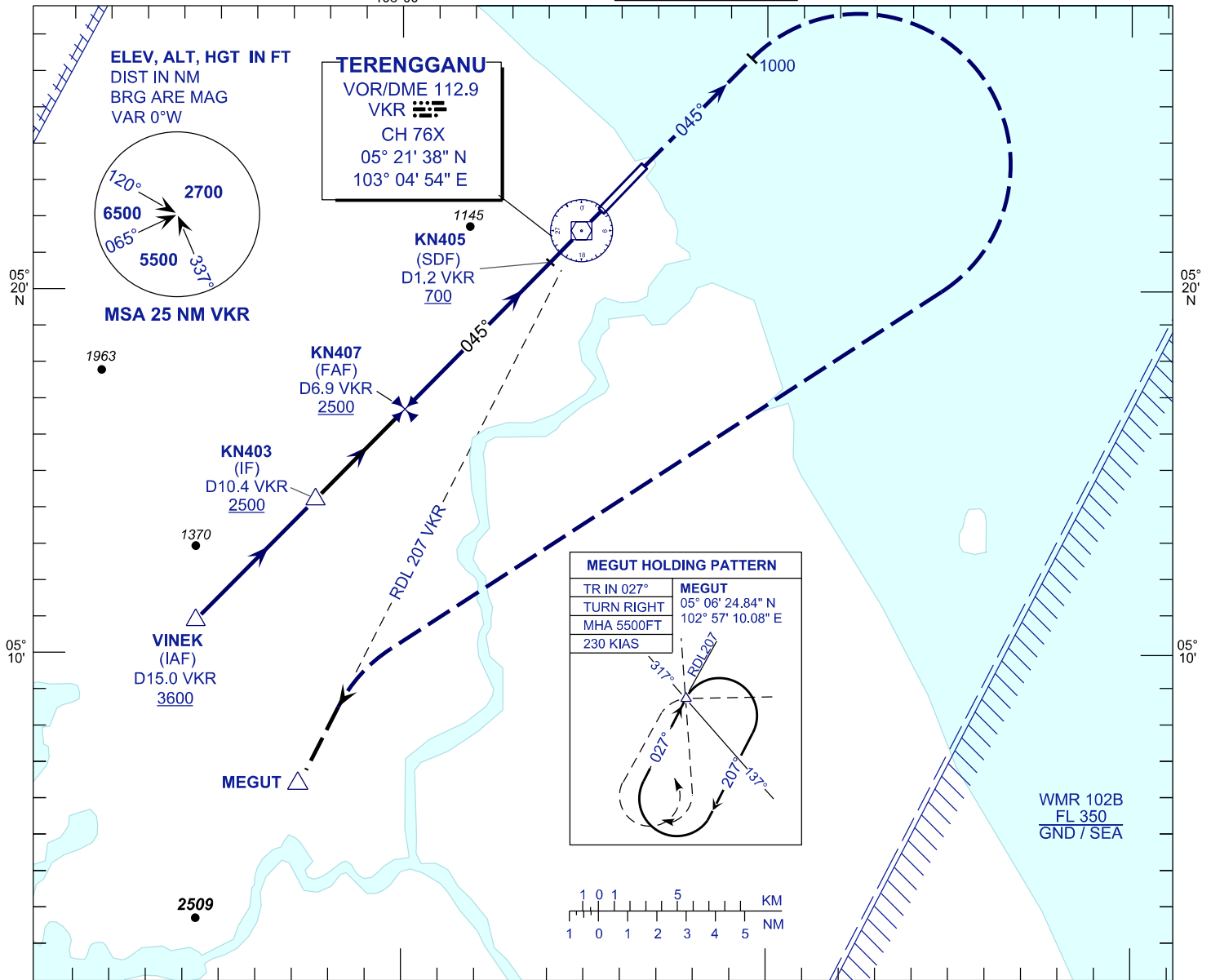
# INSTRUMENT APPROACH CHART - ICAO

AERODROME ELEV 21 FT  
HEIGHT RELATED TO  
THR RWY 04 - ELEV 19 FT

APP	123.6
	235.32
	121.5
TWR	119.05
SMC	121.6
ATIS	126.65

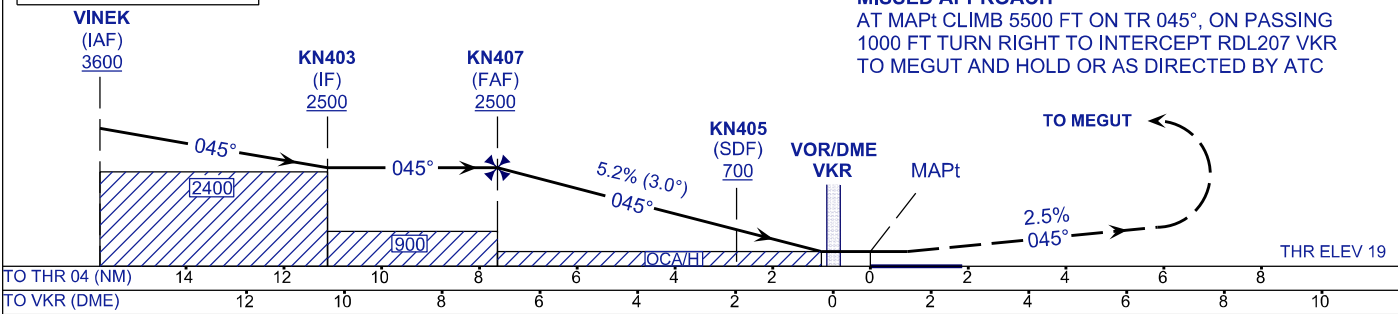
**KUALA TERENGGANU/  
SULTAN MAHMUD (WMKN)  
RWY 04**

VOR Z



TRANSITION LEVEL FL130  
TRANSITION ALT 11000

**MISSED APPROACH**  
AT MAPt CLIMB 5500 FT ON TR 045°, ON PASSING 1000 FT TURN RIGHT TO INTERCEPT RDL207 VKR TO MEGUT AND HOLD OR AS DIRECTED BY ATC



OCA / OCH	A	B	C	D
VOR/DME	390 / (371)			

DME VKR	NM	6.9	6.0	5.0	4.0	3.0	2.0	1.0	0.0
DIST THR/RWY04	NM	7.6	6.8	5.8	4.8	3.8	2.8	1.8	0.6
ALTITUDE	FT	2500	2230	1912	1594	1275	957	638	268

GS	KT	80	100	120	140	160	180
FAF - RWY04 (7.6NM)	MIN:SEC	5:44	4:35	3:49	3:17	2:52	2:33
RATE OF DESCEND(318.5FT/NM)	FT/MIN	420	530	630	740	840	950