

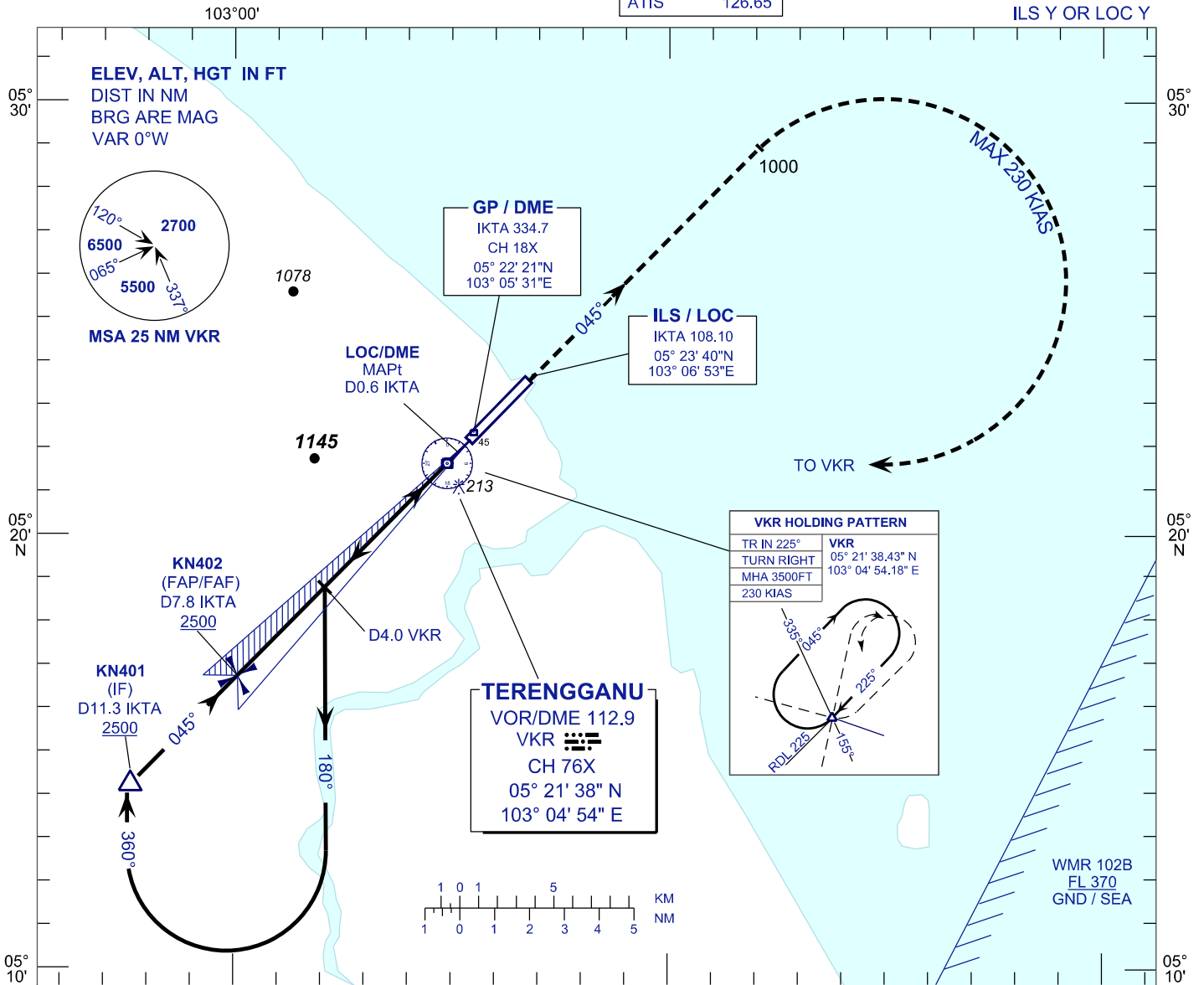
# INSTRUMENT APPROACH CHART - ICAO

AERODROME ELEV 21 FT  
HEIGHT RELATED TO  
THR RWY 04 - ELEV 19 FT

APP	123.6
	235.32
	121.5
TWR	119.05
SMC	121.6
ATIS	126.65

**KUALA TERENGGANU/  
SULTAN MAHMUD (WMKN)  
RWY 04**

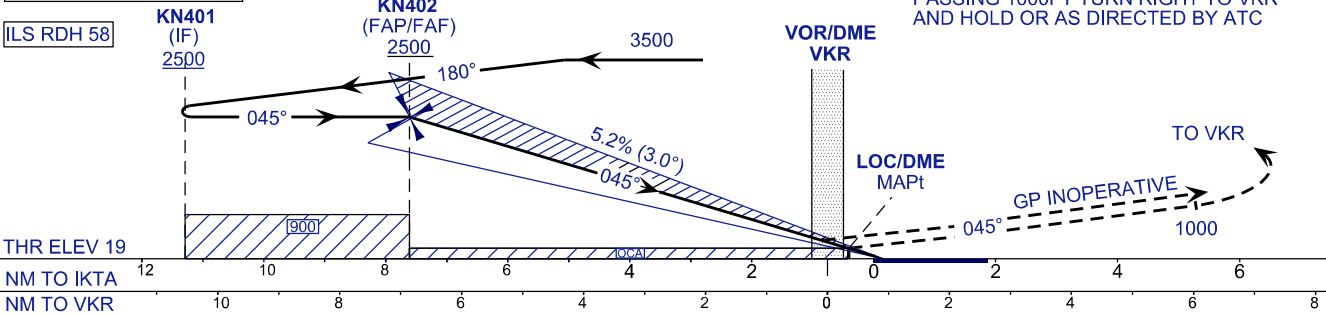
ILS Y OR LOC Y



TRANSITION LEVEL FL130  
TRANSITION ALT 11000

USE QNH

**MISSED APPROACH**  
AT MAPt CLIMB TO 3500FT ON TR 045°  
PASSING 1000FT TURN RIGHT TO VKR  
AND HOLD OR AS DIRECTED BY ATC



OCA (OCH)	A	B	C	D
ILS/DME CAT I	256 (237)			
LOC/DME	390 (371)			

DME IKTA	NM	7.8	6.8	5.8	4.8	3.8	2.8	1.8	0.8
DIST THR/RWY04	NM	7.6	6.6	5.6	4.6	3.6	2.6	1.6	0.6
ALTITUDE	FT	2500	2197	1861	1542	1224	905	587	268

GROUND SPEED (GS)	KNOTS	80	100	120	140	160	180
FAP - RWY04 (7.6 NM)	MIN:SEC	5:43	4:34	3:49	3:16	2:52	2:33
RATE OF DESCEND (318.4 FT/NM)	FT/MIN	420	530	630	740	840	950