

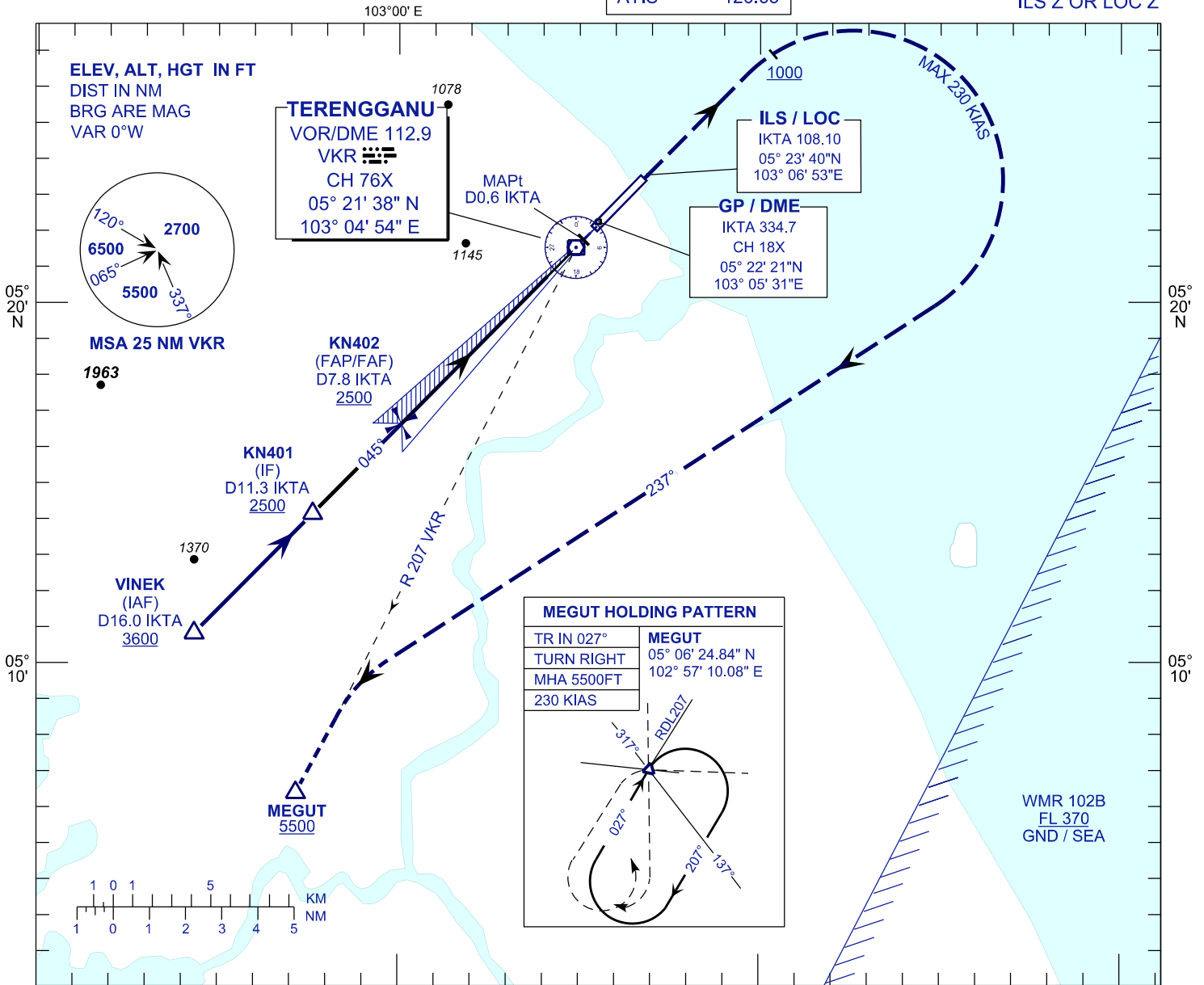
INSTRUMENT APPROACH CHART - ICAO

AERODROME ELEV 21 FT
HEIGHT RELATED TO
THR RWY 04 - ELEV 19 FT

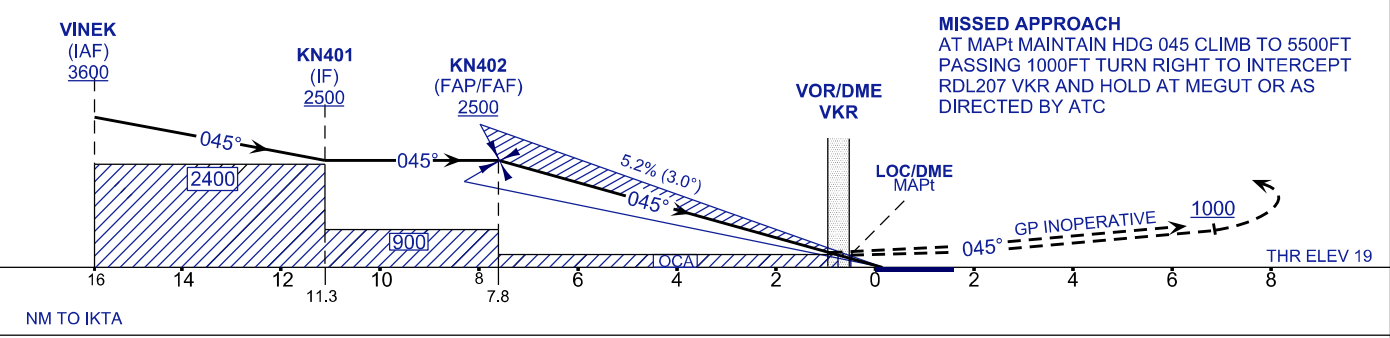
**KUALA TERENGGANU/
SULTAN MAHMUD (WMKN)
RWY 04**

APP	123.6
	235.32
	121.5
TWR	119.05
SMC	121.6
ATIS	126.65

ILS Z OR LOC Z



ILS RDH 58 USE QNH TRANSITION LEVEL FL130
TRANSITION ALT 11000



OCA (OCH)	A	B	C	D
ILS/DME CAT I	256 (237)			
LOC/DME (GP INOP)	390 (371)			

DME IKTA	NM	7.8	7.0	6.0	5.0	4.0	3.0	2.0	1.0
DIST THR/RWY04	NM	7.6	6.8	5.8	4.8	3.8	2.8	1.8	0.8
ALTITUDE	FT	2500	2251	1933	1615	1296	978	659	340

GROUND SPEED (GS)	KT	80	100	120	140	160	180
FAP - RWY04 (7.6 NM)	MIN:SEC	5:43	4:34	3:49	3:16	2:52	2:33
RATE OF DESCEND (318.4 FT/NM)	FT/MIN	420	530	630	740	840	950