

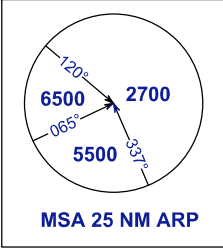
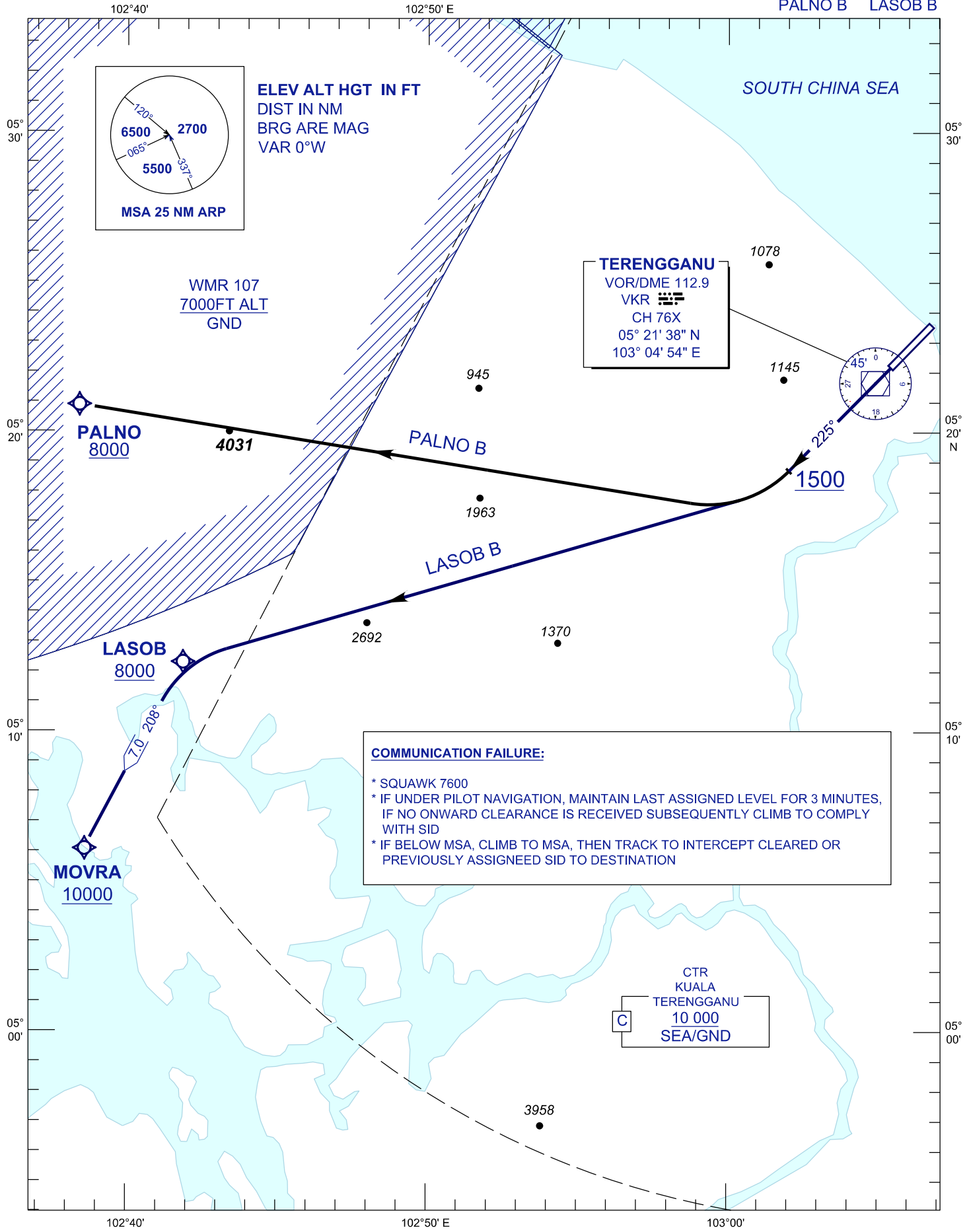
**STANDARD DEPARTURE CHART
INSTRUMENT (SID) - ICAO**

TRANSITION ALTITUDE
11000 FT

| | |
|------|--------|
| APP | 123.6 |
| | 235.32 |
| TWR | 121.5 |
| SMC | 119.05 |
| ATIS | 121.6 |
| | 126.65 |

**KUALA TERENGGANU/
SULTAN MAHMUD (WMKN)
RNAV(GNSS) RWY 22**

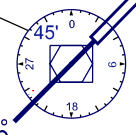
PALNO B LASOB B



ELEV ALT HGT IN FT
DIST IN NM
BRG ARE MAG
VAR 0°W

WMR 107
7000FT ALT
GND

TERENGGANU
VOR/DME 112.9
VKR
CH 76X
05° 21' 38" N
103° 04' 54" E



COMMUNICATION FAILURE:

- * SQUAWK 7600
- * IF UNDER PILOT NAVIGATION, MAINTAIN LAST ASSIGNED LEVEL FOR 3 MINUTES, IF NO ONWARD CLEARANCE IS RECEIVED SUBSEQUENTLY CLIMB TO COMPLY WITH SID
- * IF BELOW MSA, CLIMB TO MSA, THEN TRACK TO INTERCEPT CLEARED OR PREVIOUSLY ASSIGNED SID TO DESTINATION

CTR
KUALA
TERENGGANU
10 000
SEA/GND