

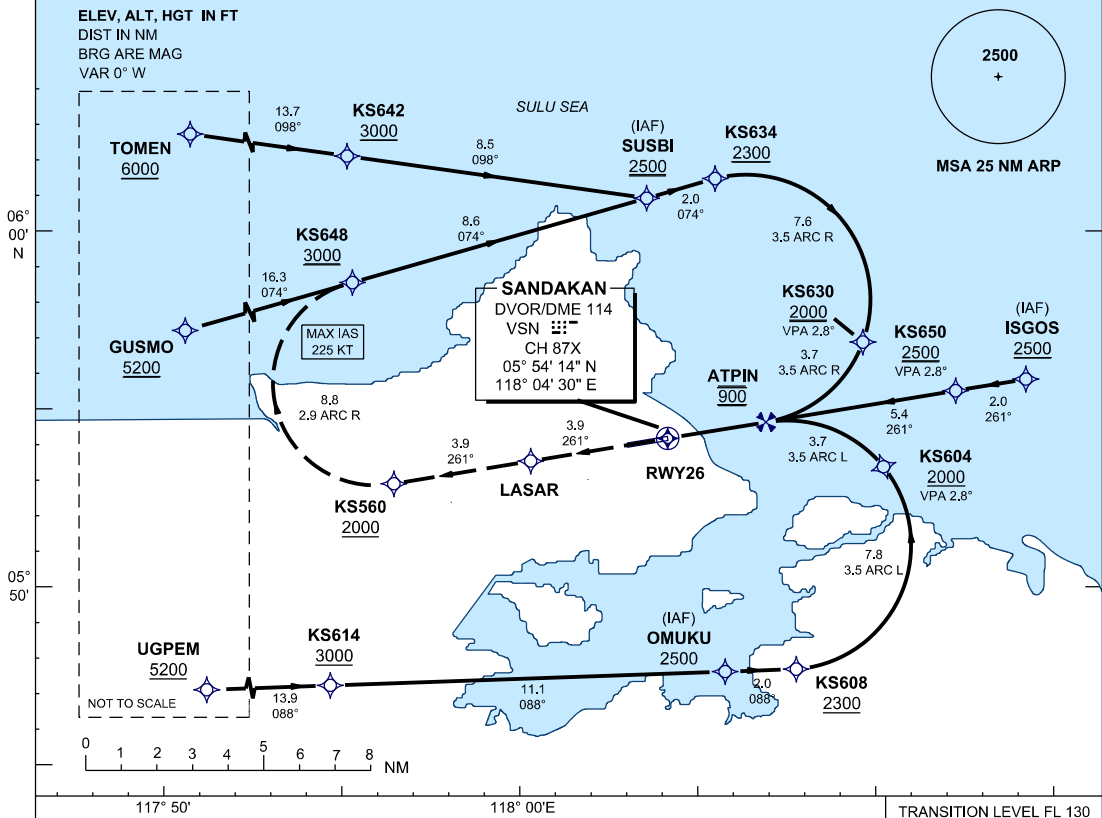
**INSTRUMENT**  
**APPROACH**  
**CHART - ICAO**

**AERODROME ELEV 46 FT**  
**HEIGHTS RELATED TO**  
**THR RWY 26 - ELEV 20 FT**

SMC 121.9  
TWR 122.05  
APP 123.2  
ATIS 128.2

**SANDAKAN/SANDAKAN**  
**(WBKS)**  
**RWY 26**  
RNAV (RNP) Z

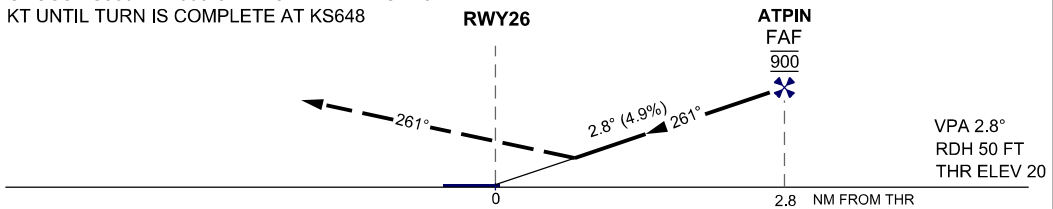
1. AUTHORIZATION REQUIRED
2. DUAL GNSS REQUIRED
3. RF REQUIRED
4. APPROACH NOT AUTHORIZED WHEN AIRPORT TEMPERATURE BELOW 20°C OR ABOVE 35°C
5. WBKS ALTIMETER SETTING REQUIRED.
6. PAPI AND VERTICAL PATH ANGLE NOT COINCIDENT
- PROCEDURE REQUIRES RNP 0.3 FROM IAFS TO LARIS
8. TOGA TO NAV REQUIRED
9. PROCEDURE REQUIRES RNP 1.0 IN FEEDER SEGMENTS
- CLIMB GRADIENT OF 3.7% TO 2000 REQUIRED TO REACH KS560



TRANSITION LEVEL FL 130  
TRANSITION ALT 11000

**MISSED APPROACH**

CLIMB TO 2500 VIA THE RNAV (RNP) MISSED  
APCH TRACK TO SUSBI OR AS DIRECTED BY ATC.  
CROSS KS560 AT 2000 OR ABOVE. MAX IAS 225  
KT UNTIL TURN IS COMPLETE AT KS648



OCA/H		
ACFT CAT.	C	D
RNP 0.3	465 (445) / 2.1 KM	

GROUND SPEED - KT	70	90	100	120	140	160
RATE OF DESCENT (2.8°) ( FT/MIN )	347	446	495	594	693	792

DISTANCE TO THRESHOLD (NM)	2.8	2	1
ALTITUDE (FT)	900	670	370