

**INSTRUMENT APPROACH CHART - ICAO**

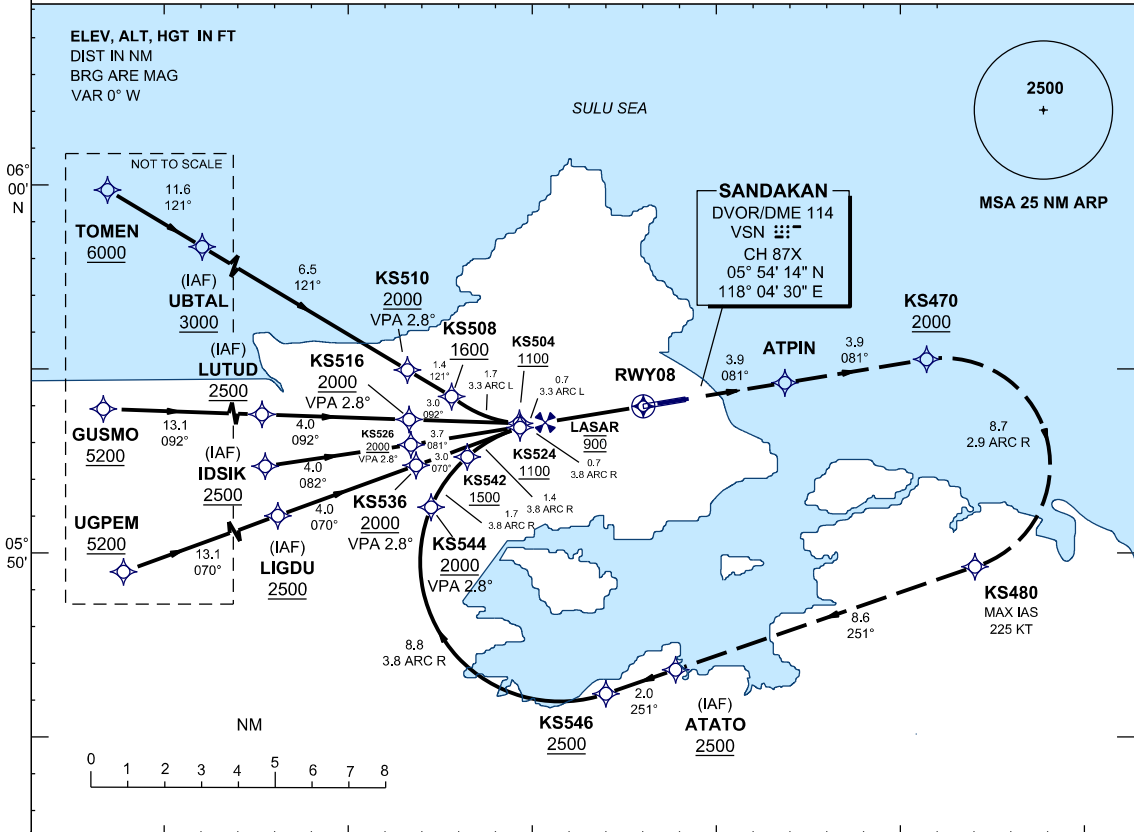
**AERODROME ELEV 46 FT**  
**HEIGHTS RELATED TO THR RWY 08 - ELEV 38 FT**

SMC 121.9  
 TWR 122.05  
 APP 123.2  
 ATIS 128.2

**SANDAKAN/SANDAKAN (WBKS) RWY 08**

RNAV (RNP) Z

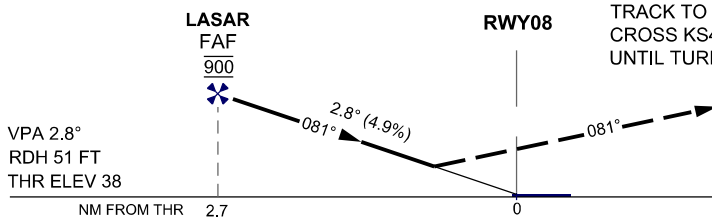
1. AUTHORIZATION REQUIRED
2. DUAL GNSS REQUIRED
3. RF REQUIRED
4. APPROACH NOT AUTHORIZED WHEN AIRPORT TEMPERATURE BELOW 20°C OR ABOVE 35°C
5. WBKS ALTIMETER SETTING REQUIRED.
6. PAPI AND VERTICAL PATH ANGLE NOT COINCIDENT
7. PROCEDURE REQUIRES RNP 0.3 FROM IAFS TO ATPIN
8. TOGA TO NAV REQUIRED
9. PROCEDURE REQUIRES RNP 1.0 IN FEEDER SEGMENTS
10. CLIMB GRADIENT OF 3.7% TO 2000 REQUIRED TO REACH KS470



TRANSITION LEVEL : FL 130  
 TRANSITION ALT 11000

**MISSED APPROACH**

CLIMB TO 2500 VIA THE RNAV (RNP) MISSED APCH TRACK TO ATATO OR AS DIRECTED BY ATC.  
 CROSS KS470 AT 2000 OR ABOVE. MAX IAS 225 KT UNTIL TURN IS COMPLETE AT KS480



OCA/H		
ACFT CAT.	C	D
RNP 0.3	465 (427) / 1.5 KM	

GROUND SPEED - KT	70	90	100	120	140	160
RATE OF DESCENT (2.8°) (FT/MIN)	347	446	495	594	693	792

DISTANCE TO THRESHOLD (NM)	2.7	2	1
ALTITUDE (FT)	900	670	370

CHANGES : CHANGE THR RWY 08 ELEVATION TO 38 FT