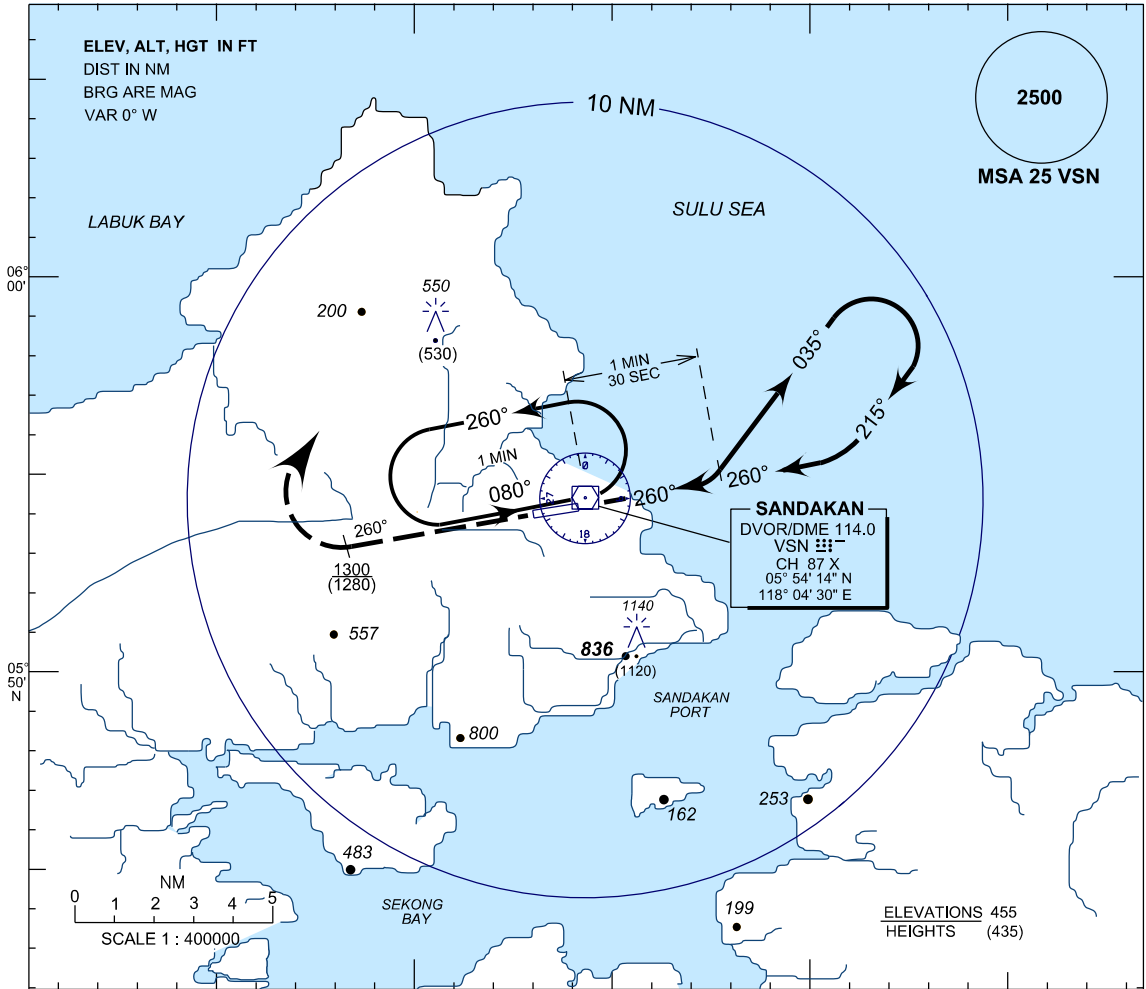


**INSTRUMENT  
APPROACH  
CHART - ICAO**

**AERODROME ELEV 46FT**  
HEIGHT RELATED TO  
THR RWY 26 - ELEV 20FT

SMC 121.9  
TWR 122.05  
APP 123.2  
ATIS 128.2

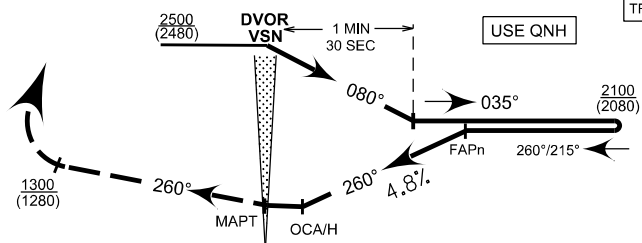
**SANDAKAN/SANDAKAN  
(WBKS)**  
**RWY 26 (CAT C & D)**  
VOR



BASED ON TAS 220 KT (STILL AIR)

TRANSITION LEVEL FL130  
TRANSITION ALT 11000

**MISSED APPROACH**  
AT MAPT CLIMB ON 260° TO 1300(1280) OR ABOVE, TURN RIGHT AND RETURN TO HOLDING PATTERN OR AS DIRECTED BY ATC.



THR ELEV 20  
THR RWY 26

NM FROM VOR

CATEGORY OF AIRCRAFT	OCA (OCH)			
	A	B	C	D
VOR/DME	-	-	400 (380)	-
CIRCLING	-	-	1400 (1380)	-
CAUTION	RIGHT HAND CIRCLING ONLY			

TIME TO TRESHOLD RUNWAY 26 FROM FAPN DISTANCE 7.0 NAUTICAL MILES						
GROUND SPEED (KT)	70	90	120	150	180	210
MINUTES: SECONDS	-	-	3:30	2:48	2:19	2:00
4.8% DESCENT(FT/MIN)	-	-	585	732	880	1025