

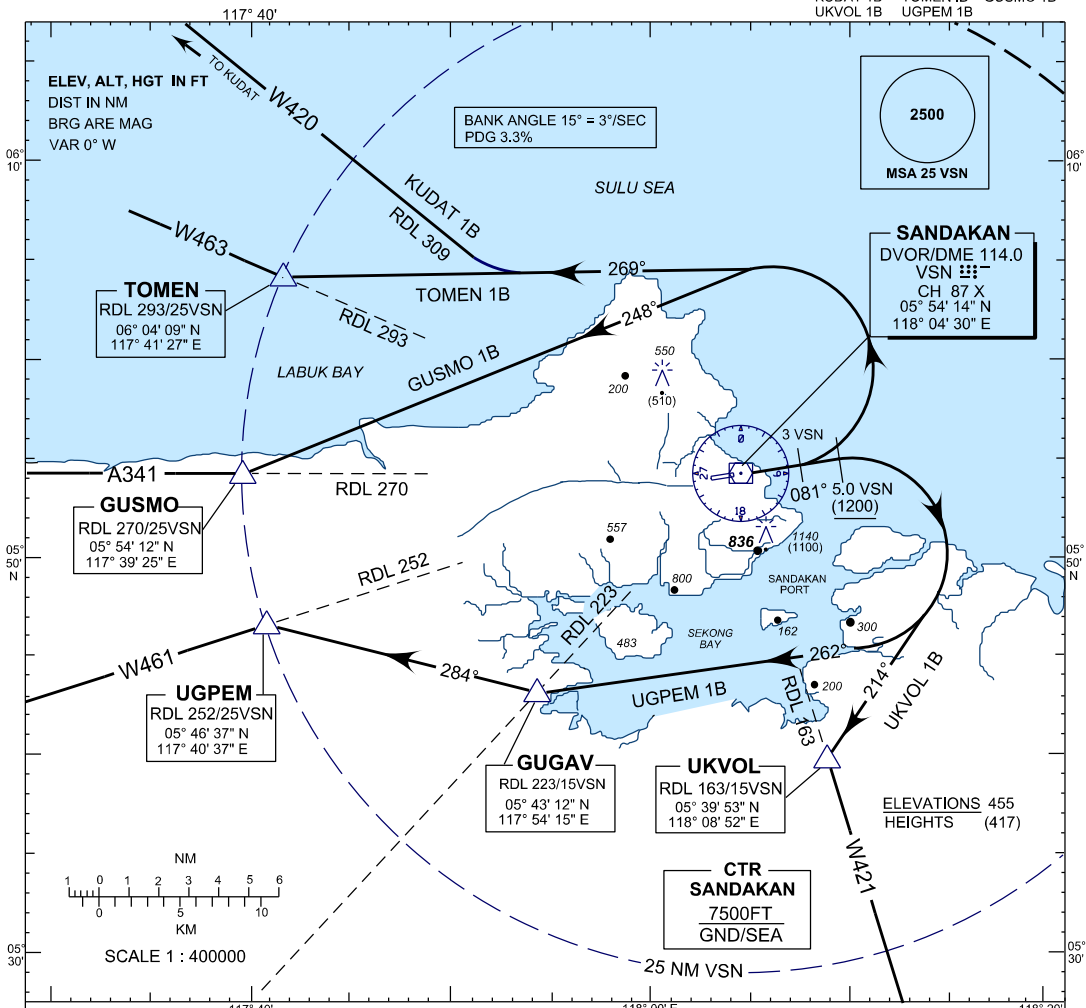
**STANDARD DEPARTURE CHART
INSTRUMENT (SID) - ICAO**

**SANDAKAN/SANDAKAN
(WBKS)
RWY 08**

TRANSITION ALTITUDE
11000FT

SMC 121.9
TWR 122.05
APP 123.2
ATIS 128.2

KUDAT 1B TOMEN 1B GUSMO 1B
UKVOL 1B UGPEM 1B



**KUDAT 1 BRAVO DEPARTURE
TOMEN 1 BRAVO DEPARTURE
GUSMO 1 BRAVO DEPARTURE
UGPEM 1 BRAVO DEPARTURE
UKVOL 1 BRAVO DEPARTURE**

KUDAT 1 BRAVO DEPARTURE

- * TRACK 081° AT 3.0 DME VSN TURN LEFT
- * TRACK 269° INTERCEPT RDL 309 VSN TO KUDAT

TOMEN 1 BRAVO DEPARTURE

- * TRACK 081° AT 3.0 DME VSN TURN LEFT
- * TRACK 269° INTERCEPT RDL 293 VSN TO TOMEN

GUSMO 1 BRAVO DEPARTURE

- * TRACK 081° AT 3.0 DME VSN TURN LEFT
- * TRACK 248° INTERCEPT RDL 270 VSN TO GUSMO

UGPEM 1 BRAVO DEPARTURE

- * TRACK 081° AT 5.0 DME VSN TURN RIGHT
- * TRACK 262° INTERCEPT RDL 223 VSN TO GUGAV (15D/VSN)
- * AT GUGAV TRACK 284° INTERCEPT RDL 252 VSN TO UGPEM

UKVOL 1 BRAVO DEPARTURE

- * TRACK 081° AT 5.0 DME VSN TURN RIGHT
- * TRACK 214° INTERCEPT RDL 163 VSN TO UKVOL