

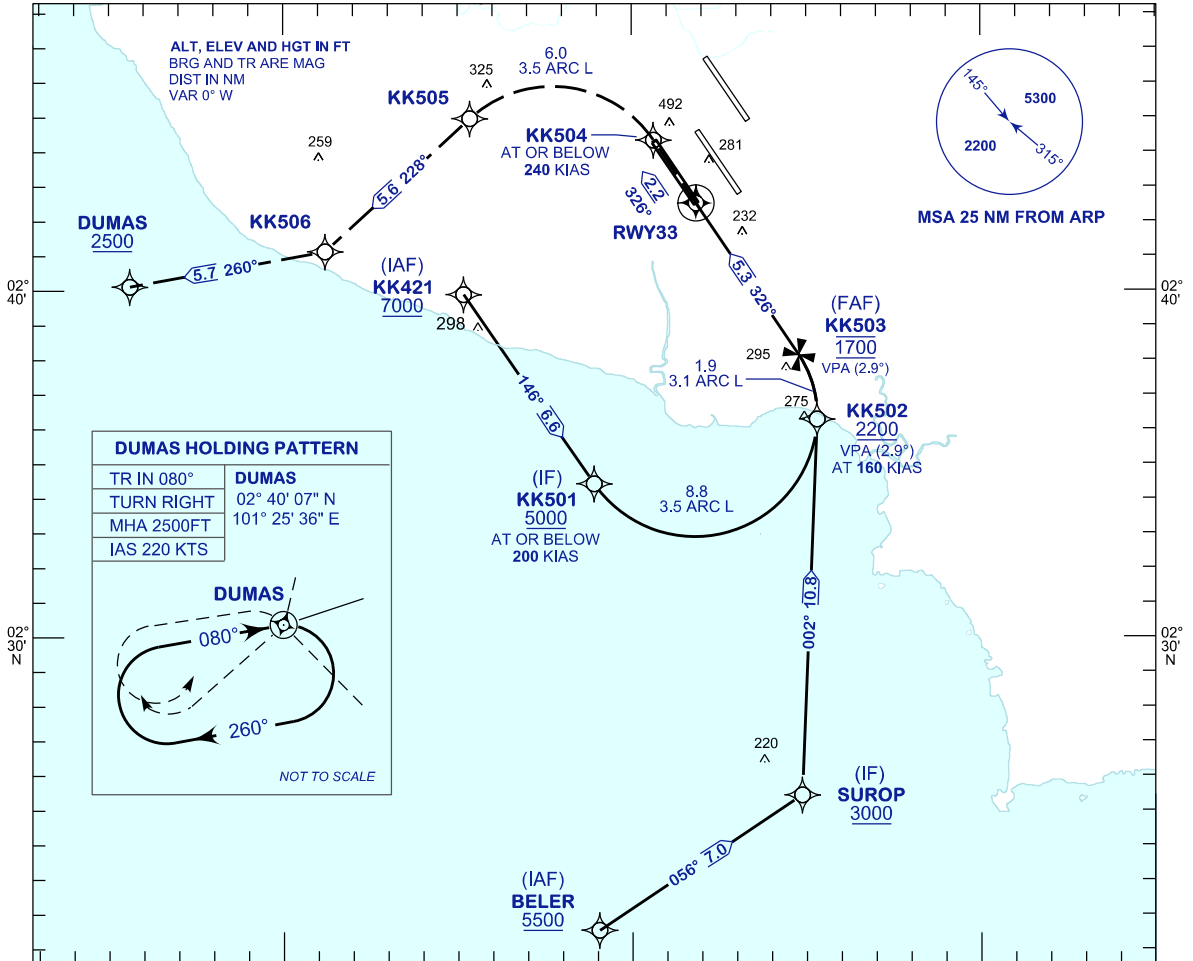
**INSTRUMENT
APPROACH
CHART - ICAO**

AERODROME ELEV 69 FT
HEIGHT RELATED TO
THR RWY 33 - ELEV 28 FT

APP	TWR	SMC	ATIS
119.45	119.80	118.050	128.05
125.85			
125.10			

**SEPANG/KL INTERNATIONAL
AIRPORT (WMKK)
RWY 33**

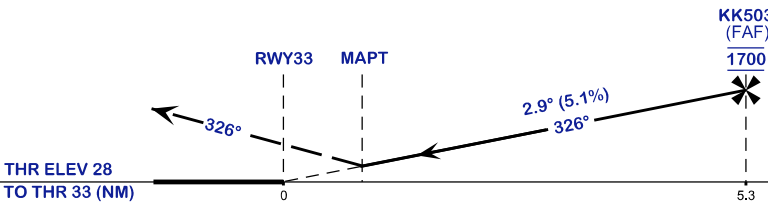
RNAV (RNP) W



VPA 2.9°
TCH 52FT

MISSED APPROACH
CLIMB TO 2500FT VIA THE RNAV (RNP) MISSED APCH
TRACK TO DUMAS OR AS DIRECTED BY ATC

TRANSITION LEVEL FL130
TRANSITION ALT 11 000



STRAIGHT - IN APPROACH	OCA (OCH)	
CATEGORY OF AIRCRAFT	C	D
RNP (0.30)	530 (502)	
CIRCLING AND ALTERNATE N/A		

AUTHORIZATION REQUIRED

NOTES

- 1) GNSS REQUIRED.
- 2) RF REQUIRED.
- 3) APPROACH NOT AUTHORIZED WHEN AIRPORT TEMPERATURE BELOW 18°C OR ABOVE 40°C.
- 4) WMKK ALTIMETER SETTING REQUIRED.
- 5) PAPI AND VERTICAL PATH ANGLE NOT COINCIDENT.
- 6) RNP 0.30 FROM IAFS TO THRESHOLD.
- 7) RNP 0.50 FROM RWY33 TO KK504

DISTANCE IN NM. BEARING ARE MAGNETIC.
ELEVATION IN FEET AMSL.