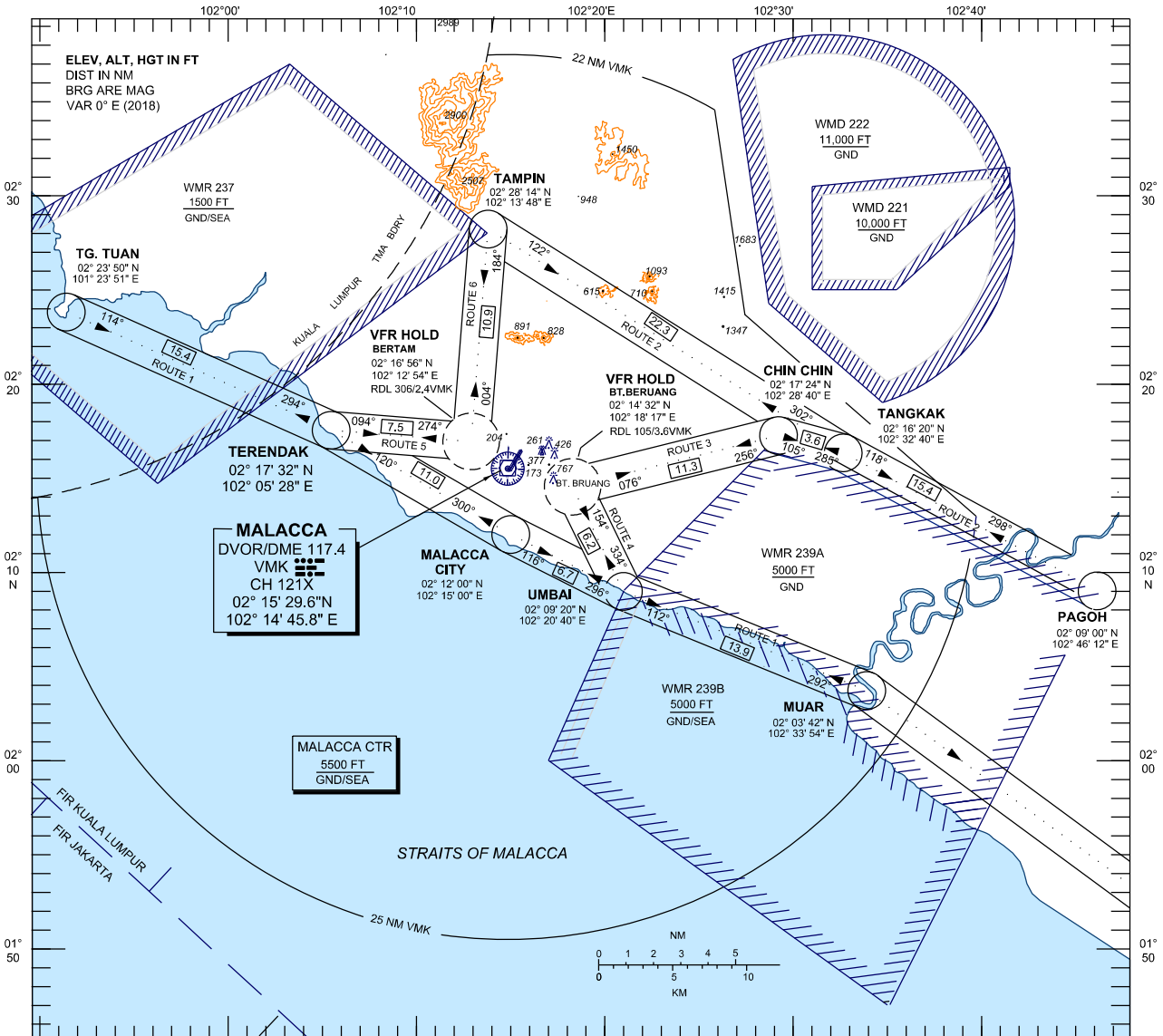


VISUAL CHART - ICAO

AERODROME ELEV 40 FT
 HEIGHTS RELATED TO
 AERODROME ELEV.

TWR - 118.00
 GND - 121.60
 ATIS - 127.45

MALACCA / MALACCA (WMKM) VFR ROUTES



- ROUTE 1 :** FROM TG. TUAN ALT NOT ABOVE 2000 FT - TERENDAK - MALACCA CITY - UMBAI - MUAR
 (ACFT TO FLY NOT BELOW 1000 FT AND REMAIN CLEAR OF PETRONAS REFINERY & TERENDAK ARMY CAMP)
- ROUTE 2 :** FROM TAMPIN-ALT NOT ABOVE 2000 FT EAST OF NORTH-SOUTH EXPRESSWAY-TANGKAK - PAGOH
- ROUTE 3 :** FROM TANGKAK ALT NOT ABOVE 2000 FT - CHIN CHIN - BT. BERUANG VFR HOLD
- ROUTE 4 :** FROM UMBAI ALT NOT ABOVE 2000 FT - BT. BERUANG VFR HOLD
- ROUTE 5 :** FROM TERENDAK ALT NOT ABOVE 2000 FT - BERTAM VFR HOLD
 (ACFT TO FLY NOT BELOW 1000 FT AND REMAIN CLEAR OF TERENDAK ARMY CAMP)
- ROUTE 6 :** FROM TAMPIN ALT NOT ABOVE 2000 FT - BERTAM VFR HOLD

NOTE 1: BT. BERUANG HOLD LOCATED EAST OF MALACCA WATER CITY RESORT
 NOTE 2: BERTAM HOLD LOCATED WEST OF BERTAM HULLY FLYOVER
 NOTE 3: WIDTH OF VFR ROUTE = 2 NM

CHANGES : CHANGE VERTICAL LIMIT FOR MALACCA CTR TO 5500 FT.
 CHANGE VERTICAL LIMIT FOR WMR 237 TO 1500 FT.