

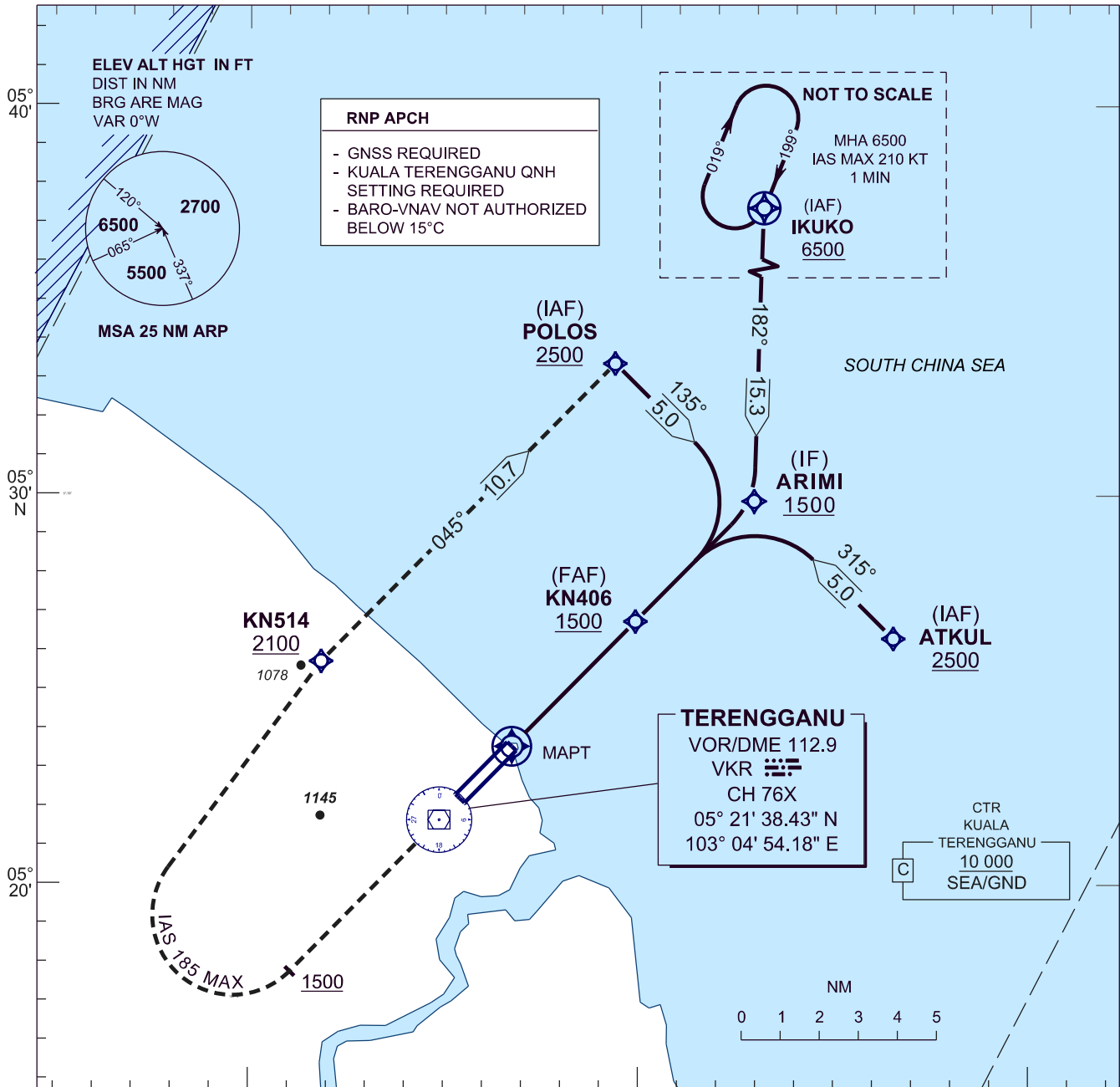
**INSTRUMENT  
APPROACH  
CHART - ICAO**

**AERODROME ELEV 21 FT**  
HEIGHT RELATED TO  
THR RWY 22 - ELEV 20 FT

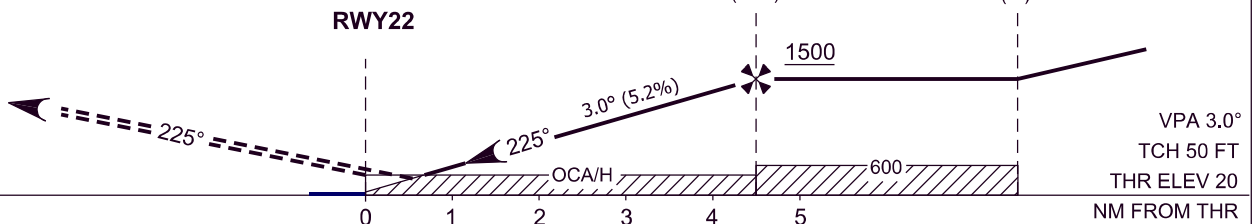
APP	123.6
	235.32
	121.5
TWR	119.05
SMC	121.6
ATIS	126.65

**KUALA TERENGGANU/  
SULTAN MAHMUD (WMKN)  
RWY 22**

RNAV (GNSS) Y



**MISSED APPROACH**  
CLIMB TO 2500. AFTER PASSING 1500 FT,  
TURN RIGHT DIRECT TO KN514 THEN TO  
POLOS OR AS DIRECTED BY ATC.



		OCA/H			
ACFT CAT.		A	B	C	D
STRAIGHT IN APPROACH	LNAV	460 (440)			
	LNAV/VNAV	365 (345)			

DISTANCE TO THRESHOLD (NM)	4.5	4.0	3.0	2.0	1.0
ALTITUDE (FT)	1500	1344	1025	707	385