

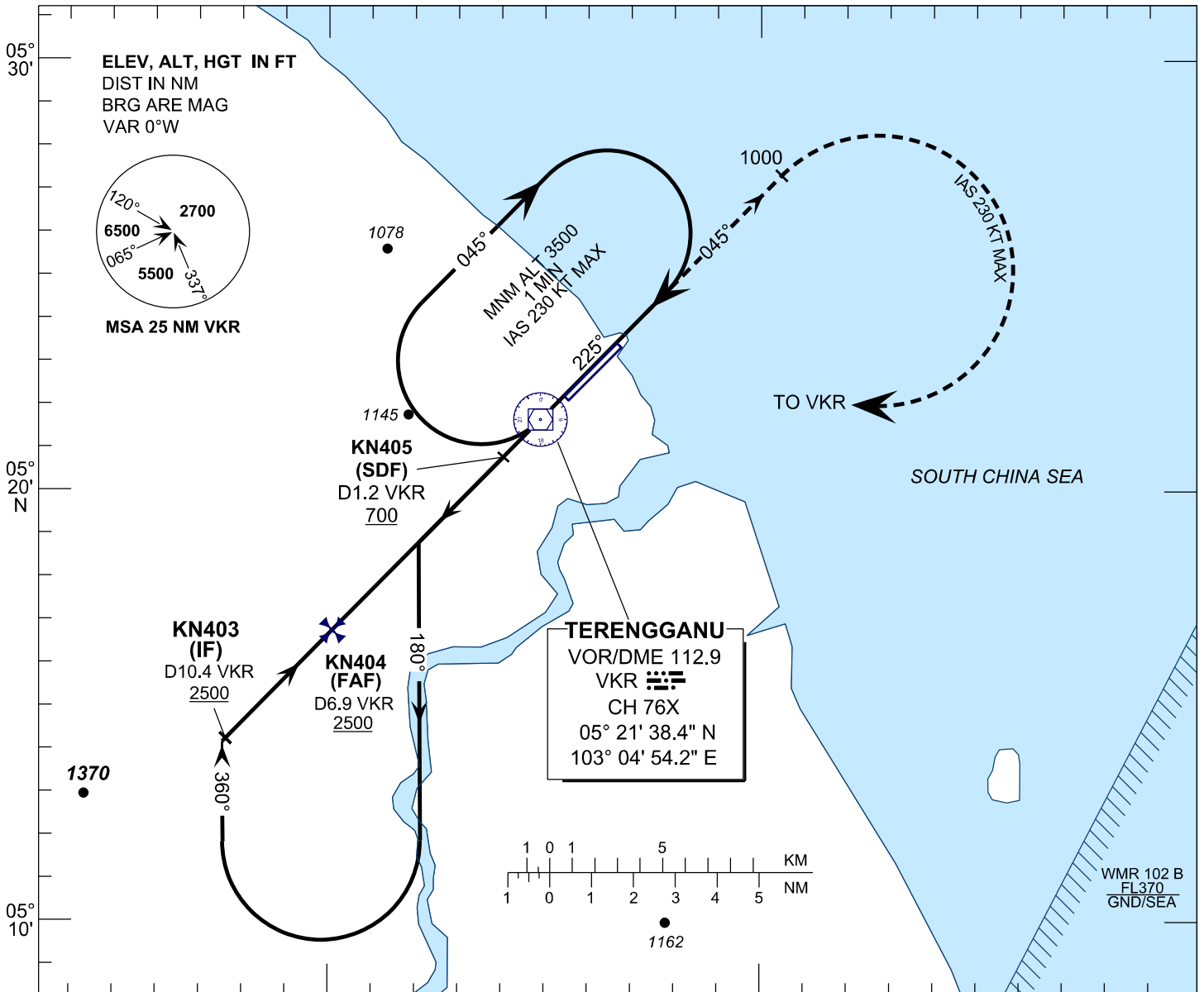
INSTRUMENT APPROACH CHART - ICAO

AERODROME ELEV 21 FT
HEIGHT RELATED TO
THR RWY 04 - ELEV 19 FT

APP	123.6
	235.32
	121.5
TWR	119.05
SMC	121.6
ATIS	126.65

**KUALA TERENGGANU/
SULTAN MAHMUD (WMKN)
RWY 04**

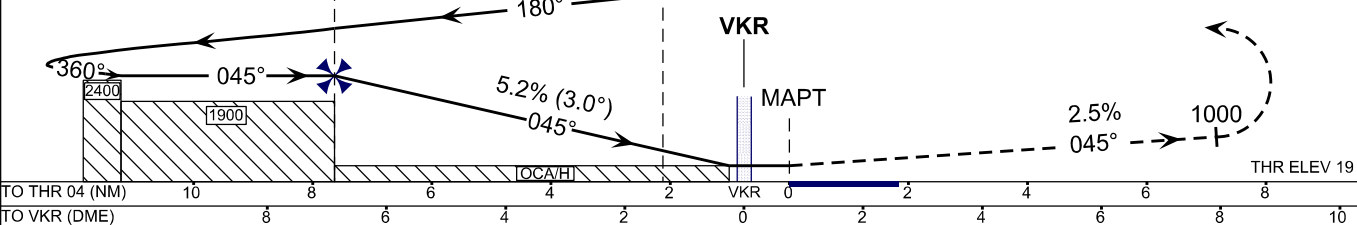
VOR Y



TRANSITION LEVEL FL130
TRANSITION ALT 11000

103°00' 103°10' E

KN404 (FAF) 2500 **KN405 (SDF) D1.2 VKR 700** **MISSED APPROACH**
AT MAPT CONTINUE H045° CLIMB TO 3500, PASSING 1000 FT TURN RIGHT TO VKR AND HOLD OR AS DIRECTED BY ATC



OCA / OCH	A	B	C	D
VOR/DME	390 / (369)			

DME VKR	NM	6.9	6.0	5.0	4.0	3.0	1.2	1.0	0.2
DIST THR/RWY04	NM	7.7	6.8	5.8	4.8	3.8	2.0	1.8	0.6
ALTITUDE	FT	2500	2223	1904	1586	1267	694	630	261

GS	KT	80	100	120	140	160	180
FAF - RWY04 (7.7NM)	MIN:SEC	5:44	4:35	3:49	3:17	2:52	2:33
RATE OF DESCEND(318.5FT/NM)	FT/MIN	420	530	630	740	840	950