

**STANDARD DEPARTURE CHART
INSTRUMENT (SID) - ICAO**

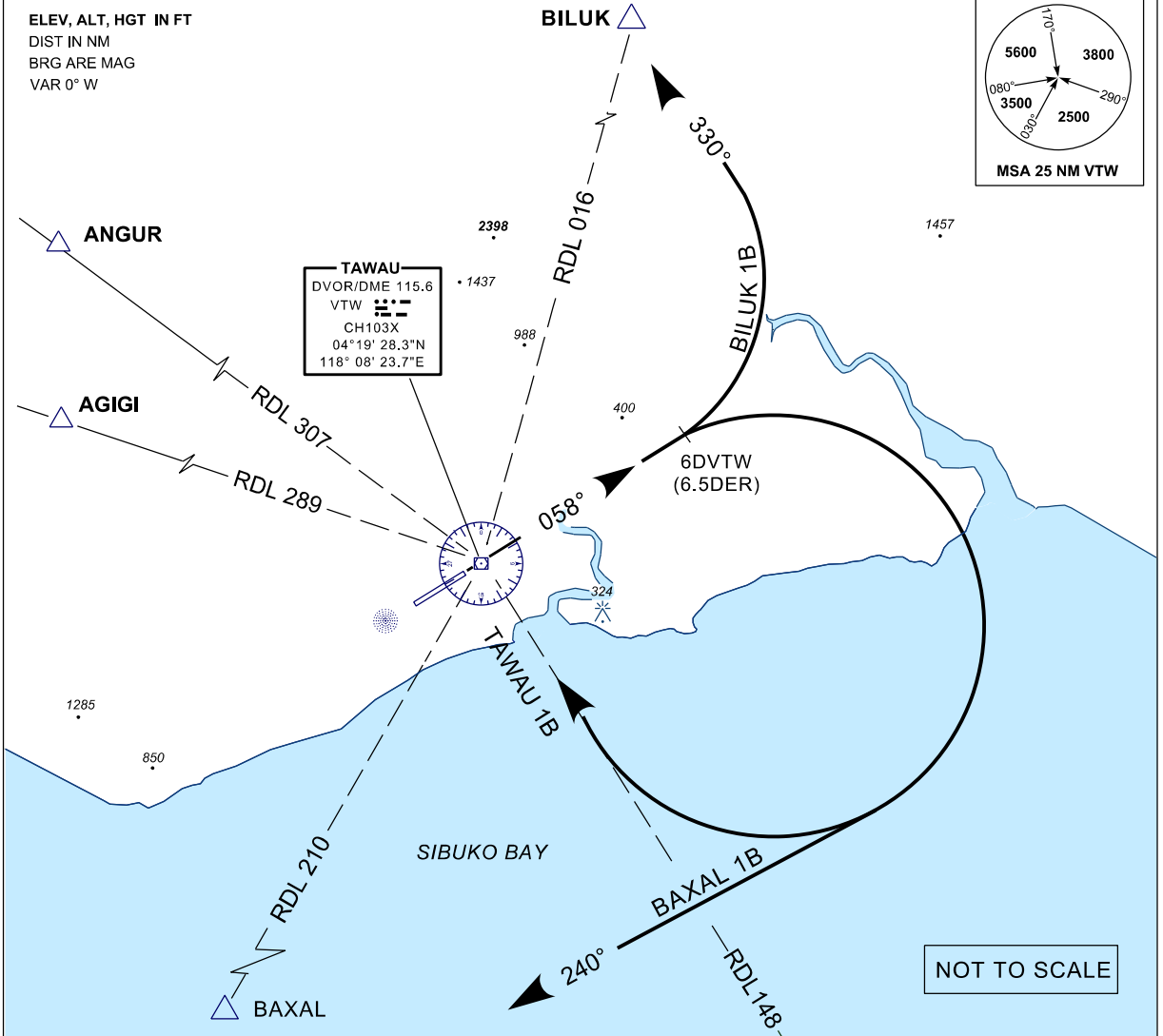
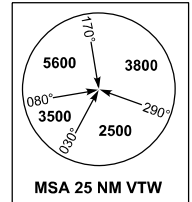
TRANSITION ALTITUDE
11 000 FT

SMC 121.90
TWR 122.50
APP 123.55
ATIS 126.25

**TAWAU/TAWAU (WBKW)
RWY 06**

TAWAU 1B BAXAL 1B BILUK 1B

ELEV, ALT, HGT IN FT
DIST IN NM
BRG ARE MAG
VAR 0° W



TAWAU 1B DEP

TRACK 058°
AT 6 DME VTW TURN RIGHT
TRACK TO VTW VOR

BAXAL 1B DEP

TRACK 058°
AT 6 DME VTW TURN RIGHT
TRACK 240° TO INTERCEPT RDL 210 VTW
TO BAXAL

BILUK 1B DEP

TRACK 058°
AT 6 DME VTW TURN LEFT
TRACK 330° TO INTERCEPT
RDL 016 VTW TO BILUK

COMMUNICATION FAILURE :

SET TRANSPONDER CODE 7600
CROSS BILUK/AGIGI/ANGUR/BAXAL CLIMBING TO/AT LAST ASSIGNED AND
ACKNOWLEDGED ALT BUT NOT BELOW MNM ALT CONTINUE TO FPL FL