

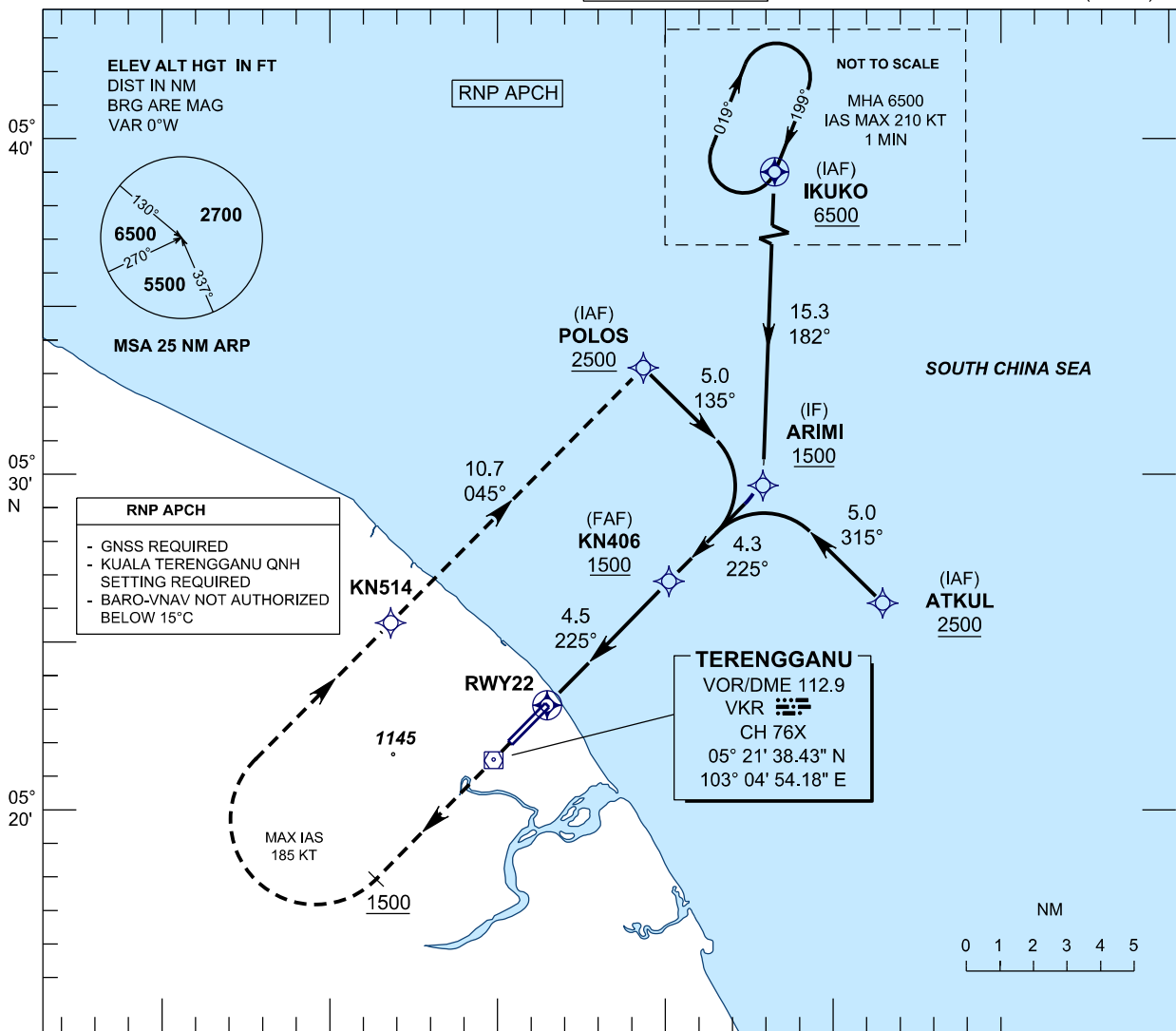
**INSTRUMENT
APPROACH
CHART - ICAO**

AERODROME ELEV 21 FT
HEIGHT RELATED TO
THR RWY 22 - ELEV 20 FT

APP	123.6
	235.32
	121.5
TWR	119.05
SMC	121.6
ATIS	126.65

**KUALA TERENGGANU/
SULTAN MAHMUD (WMKN)
RWY 22**

RNAV(GNSS) Y



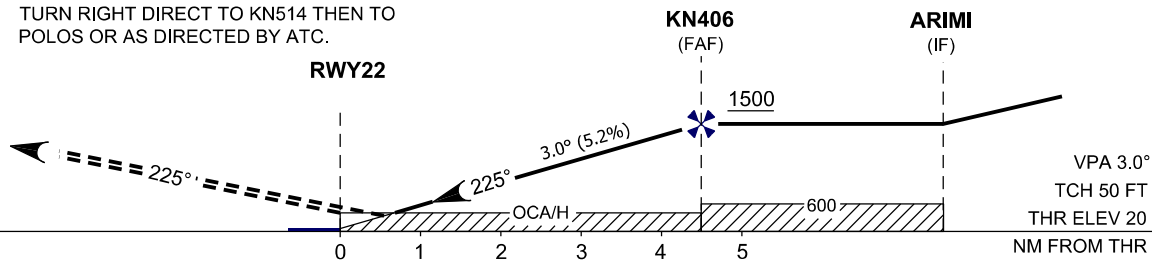
RNP APCH

- GNSS REQUIRED
- KUALA TERENGGANU QNH SETTING REQUIRED
- BARO-VNAV NOT AUTHORIZED BELOW 15°C

TERENGGANU
VOR/DME 112.9
VKR CH 76X
05° 21' 38.43" N
103° 04' 54.18" E

TRANSITION LEVEL FL 130
TRANSITION ALT 11000

MISSED APPROACH
CLIMB TO 2500. AFTER PASSING 1500 FT,
TURN RIGHT DIRECT TO KN514 THEN TO
POLOS OR AS DIRECTED BY ATC.



OCA/H					
ACFT CAT.		A	B	C	D
STRAIGHT IN APPROACH	LNAV	460 (440)			
	LNAV/VNAV	365 (345)			

DISTANCE TO THRESHOLD (NM)	4.5	4.0	3.0	2.0	1.0
ALTITUDE (FT)	1500	1295	975	660	340