

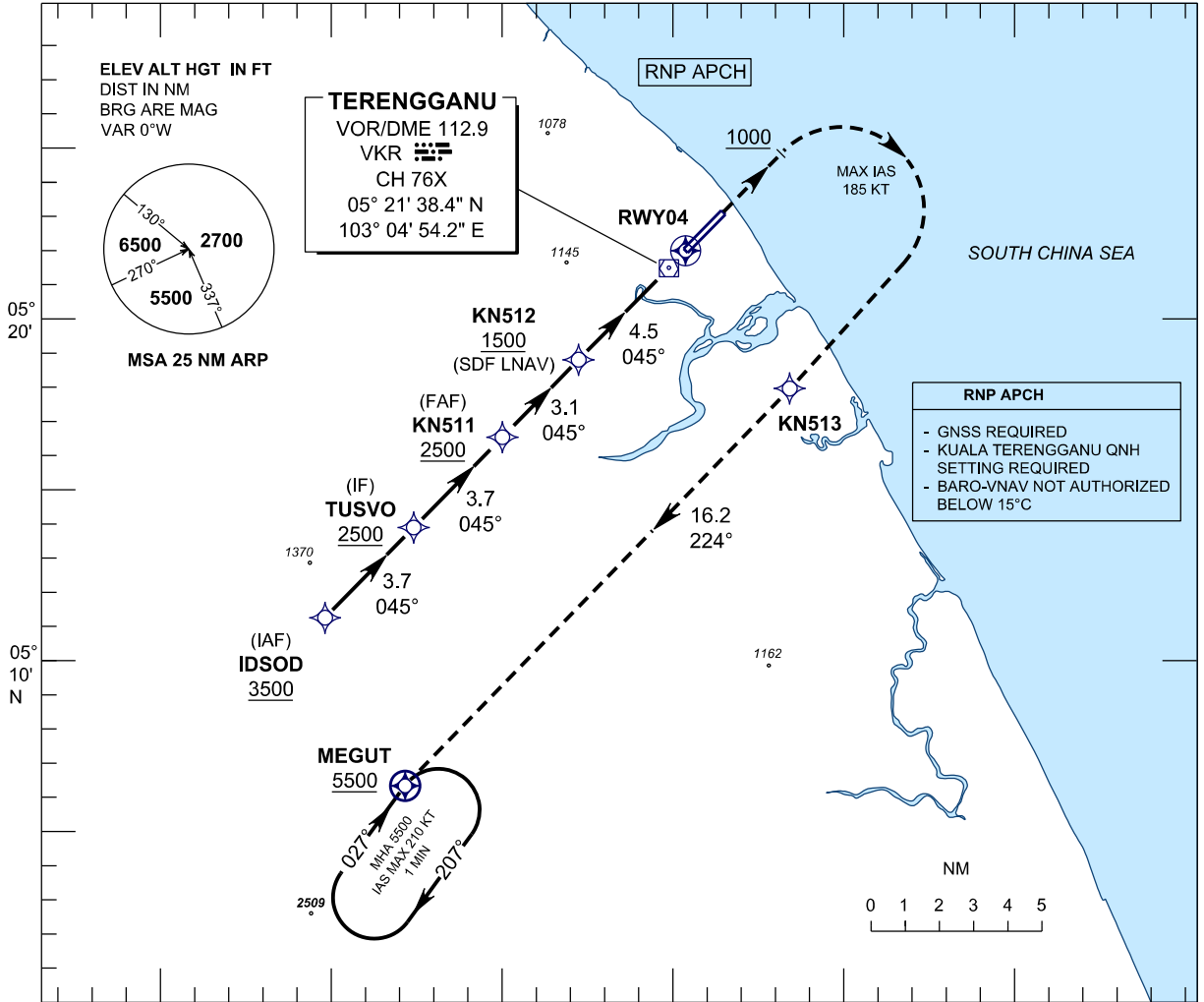
**INSTRUMENT  
APPROACH  
CHART - ICAO**

**AERODROME ELEV 21 FT**  
HEIGHT RELATED TO  
THR RWY 04 - ELEV 19 FT

APP	123.6
	235.32
	121.5
TWR	119.05
SMC	121.6
ATIS	126.65

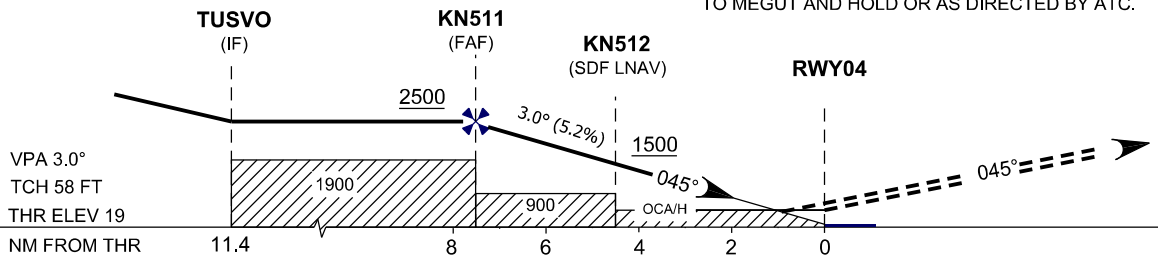
**KUALA TERENGGANU/  
SULTAN MAHMUD (WMKN)  
RWY 04**

RNAV (GNSS) Y



TRANSITION LEVEL FL 130  
TRANSITION ALT 11000

**MISSED APPROACH**  
CLIMB TO 5500 FT, AFTER PASSING 1000 FT  
TURN RIGHT DIRECT TO KN513. THEN TRACK  
TO MEGUT AND HOLD OR AS DIRECTED BY ATC.



OCA/H				
ACFT CAT.	A	B	C	D
STRAIGHT IN APPROACH	LNAV	450 (431)		
	LNAV/VNAV	425 (406)		

DISTANCE TO THRESHOLD (NM)	7.6	7.0	6.0	5.0	4.0	3.0	2.0	1.0
ALTITUDE (FT)	2500	2250	1930	1615	1295	975	660	340