

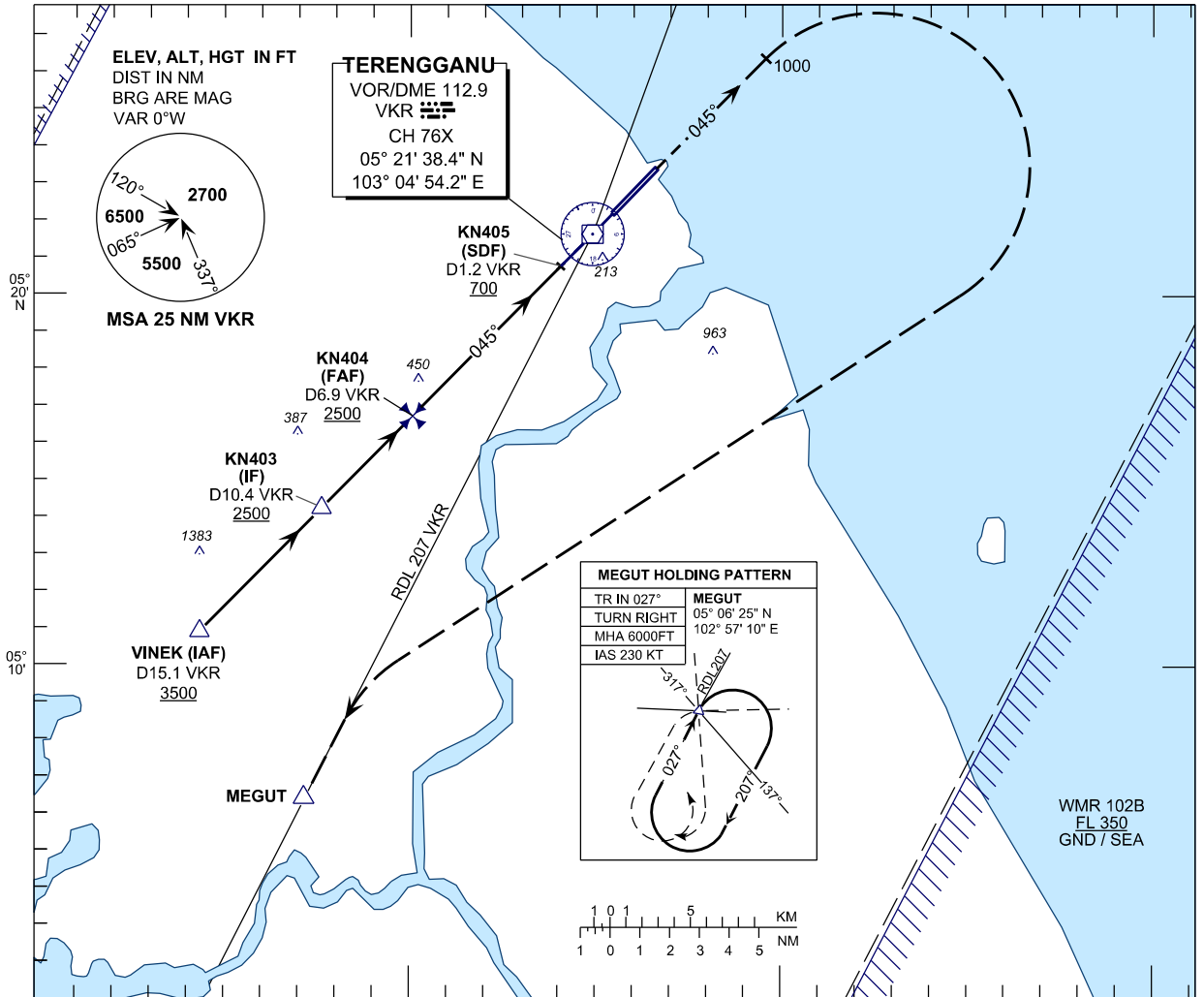
INSTRUMENT APPROACH CHART - ICAO

AERODROME ELEV 21 FT
HEIGHT RELATED TO
THR RWY 04 - ELEV 19 FT

APP 123.6
235.32
121.5
TWR 119.05
SMC 121.6
ATIS 126.65

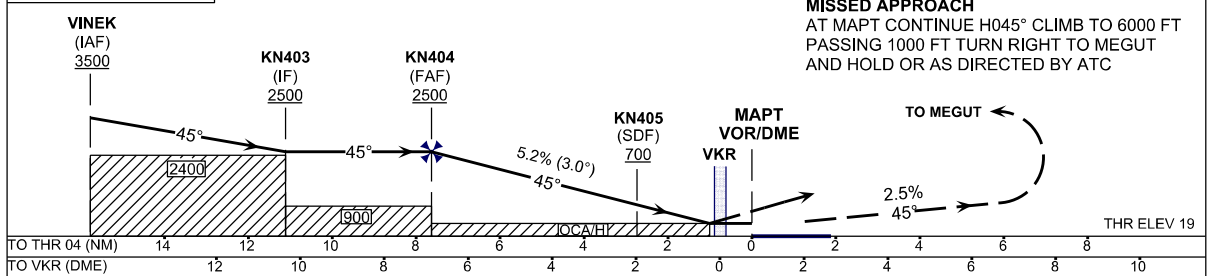
**KUALA TERENGGANU/
SULTAN MAHMUD (WMKN)
RWY 04**

VOR Z



TRANSITION LEVEL FL 130
TRANSITION ALT 11000

103°00' 103°10' E



MISSED APPROACH
AT MAPT CONTINUE H045° CLIMB TO 6000 FT
PASSING 1000 FT TURN RIGHT TO MEGUT
AND HOLD OR AS DIRECTED BY ATC

OCA / OCH	A	B	C	D	DME VKR	NM	6.9	5.9	4.9	3.9	2.9	1.2	0.9	0.3	
VOR/DME	390 / (369)				DIST THR/RWY04	NM	7.7	6.7	5.7	4.7	3.7	2.0	1.7	0.7	
					ALTITUDE	FT	2500	2191	1873	1554	1236	694	599	217	
						GS			KT	80	100	120	140	160	180
						FAF - RWY04 (6.4NM)	MIN:SEC		5:44	4:35	3:49	3:17	2:52	2:33	
						RATE OF DESCEND(318.5FT/NM)	FT/MIN		420	530	630	740	840	950	