

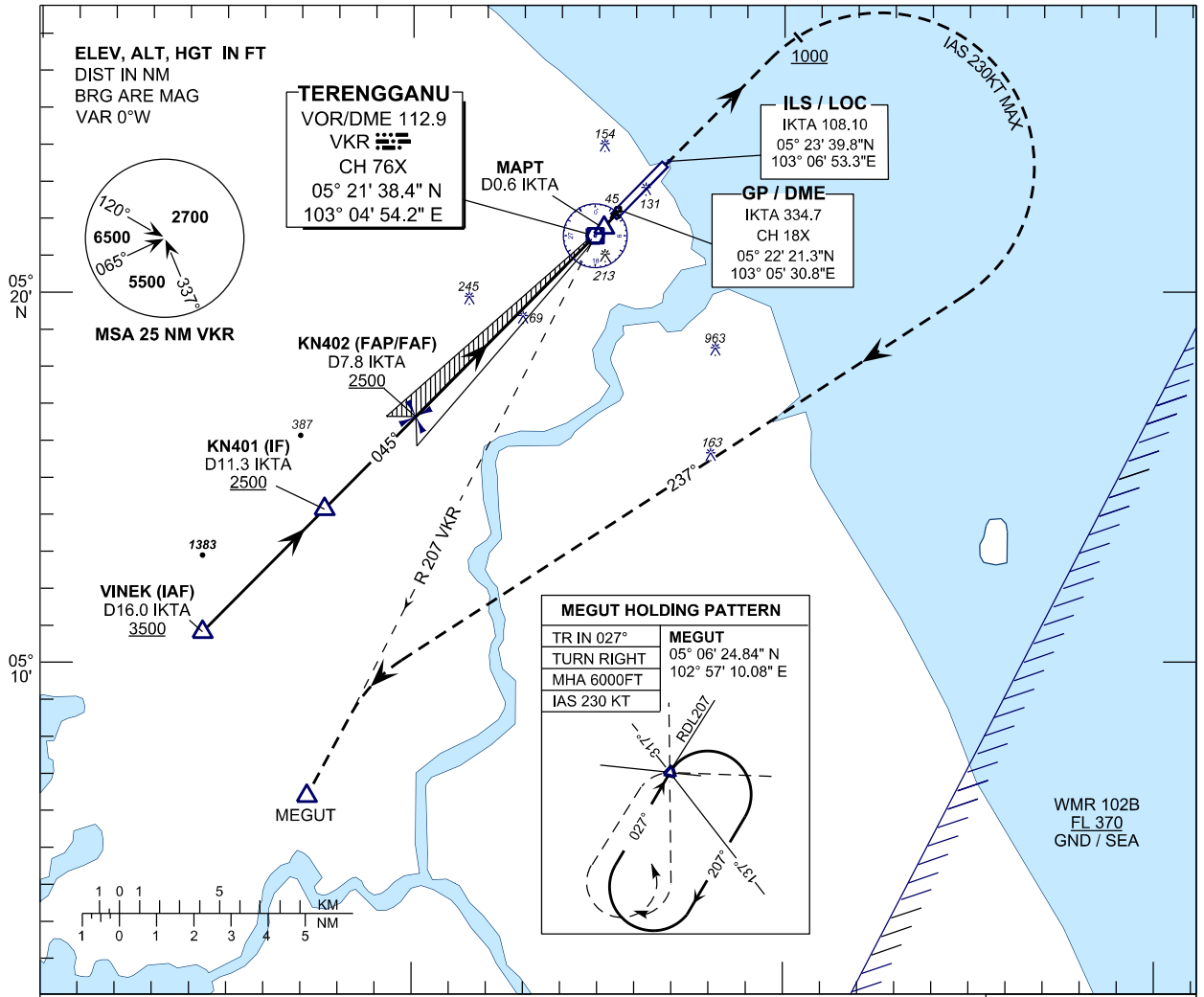
INSTRUMENT APPROACH CHART - ICAO

AERODROME ELEV 21 FT
HEIGHT RELATED TO
THR RWY 04 - ELEV 19 FT

APP	123.6
	235.32
	121.5
TWR	119.05
SMC	121.6
ATIS	126.65

**KUALA TERENGGANU/
SULTAN MAHMUD (WMKN)
RWY 04**

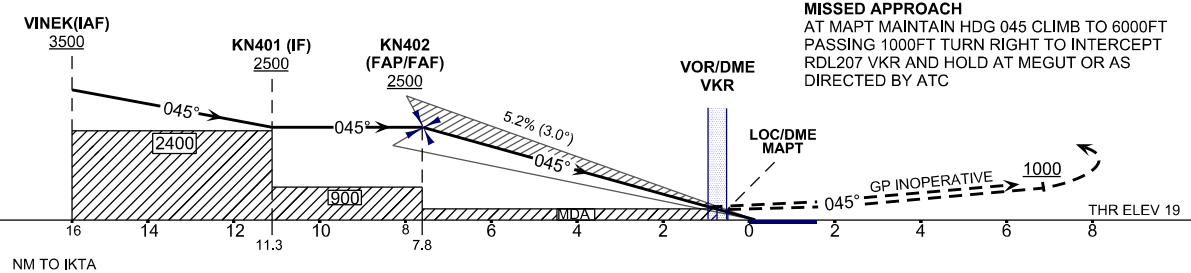
ILS Z OR LOC Z



ILS RDH 58

USE QNH

TRANSITION LEVEL FL130
TRANSITION ALT 11000



MISSED APPROACH
AT MAPT MAINTAIN HDG 045 CLIMB TO 6000FT
PASSING 1000FT TURN RIGHT TO INTERCEPT
RDL207 VKR AND HOLD AT MEGUT OR AS
DIRECTED BY ATC

OCA (OCH)	A	B	C	D
ILS/DME CAT I	256 (237)			
LOC/DME (GP INOP)	390 (371)			

DME IKTA	NM	7.8	6.8	5.8	4.8	3.8	2.8	1.8	0.8
DIST THR/RWY04	NM	7.6	6.6	5.6	4.6	3.6	2.6	1.6	0.6
ALTITUDE	FT	2500	2179	1861	1542	1224	905	587	268

GROUND SPEED (GS)	KT	80	100	120	140	160	180
FAP - RWY04 (7.6 NM)	MIN:SEC	5:43	4:34	3:49	3:16	2:52	2:33
RATE OF DESCEND (318.4 FT/NM)	FT/MIN	420	530	630	740	840	950