

**STANDARD DEPARTURE CHART
INSTRUMENT (SID) - ICAO**

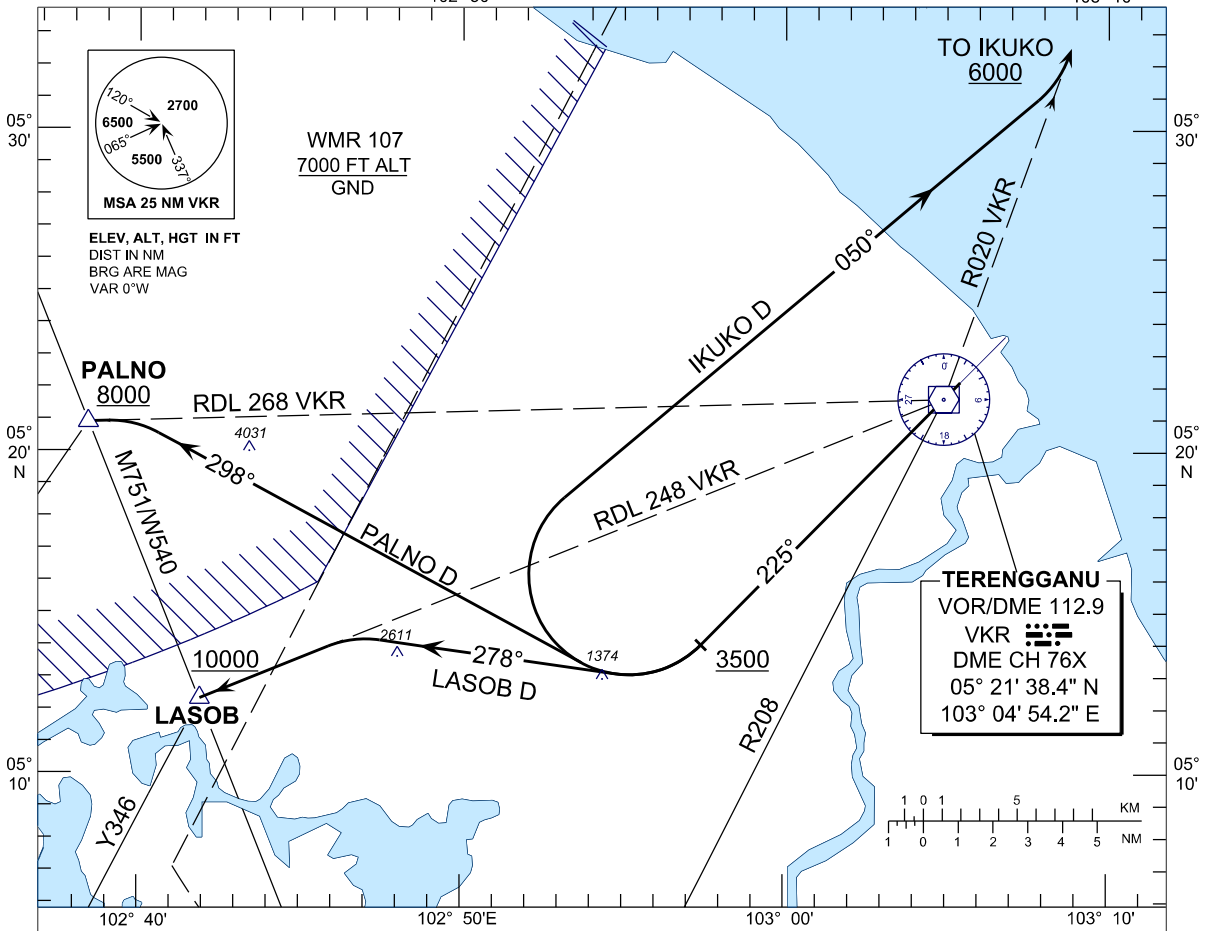
**KUALA TERENGGANU/
SULTAN MAHMUD (WMKN)
RWY 22**

APP 123.6
235.32
121.5
TWR 119.05
SMC 121.6
ATIS 126.65

TRANSITION ALTITUDE
11000 FT

BANK ANGLE : 25° OR 3°/SEC

PALNO D LASOB D IKUKO D



COMMUNICATION FAILURE :

SQUAWK 7600

- IF UNDER PILOT NAVIGATION, MAINTAIN LAST ASSIGNED LEVEL FOR 3 MINUTES, IF NO ONWARD CLEARANCE IS RECEIVED. SUBSEQUENTLY CLIMB TO COMPLY WITH SID.
- IF UNDER RADAR VECTORED : MAINTAIN VECTOR FOR 2 MINUTES, IF BELOW MSA, CLIMB TO MSA, THEN TRACK TO INTERCEPT CLEARED OR PREVIOUSLY ASSIGNED SID TO DESTINATION.

INITIAL CLIMB PROCEDURE	DESIGNATOR	SID DESCRIPTION
TRACK 225° AT 3500 FT THEN TURN RIGHT NOTE : MINIMUM CLIMB GRADIENT (PDG) 5.0%	IKUKO D	TRACK 050° TO INTERCEPT RDL020 VCR VOR OUTBOUND TO IKUKO THEN R208
	PALNO D	TRACK 298° TO INTERCEPT RDL268 VCR VOR OUTBOUND TO PALNO THEN M751/W541
	LASOB D	TRACK 278° TO INTERCEPT RDL248 VCR VOR OUTBOUND TO LASOB THEN Y346

RATE OF CLIMB (FT)							
GND SPEED - KT	120	150	180	210	240	270	
GRADIENT	3.3%	401	501	602	702	802	902
	5.0%	608	760	911	1063	1215	1367