

**STANDARD DEPARTURE CHART
INSTRUMENT (SID) - ICAO**

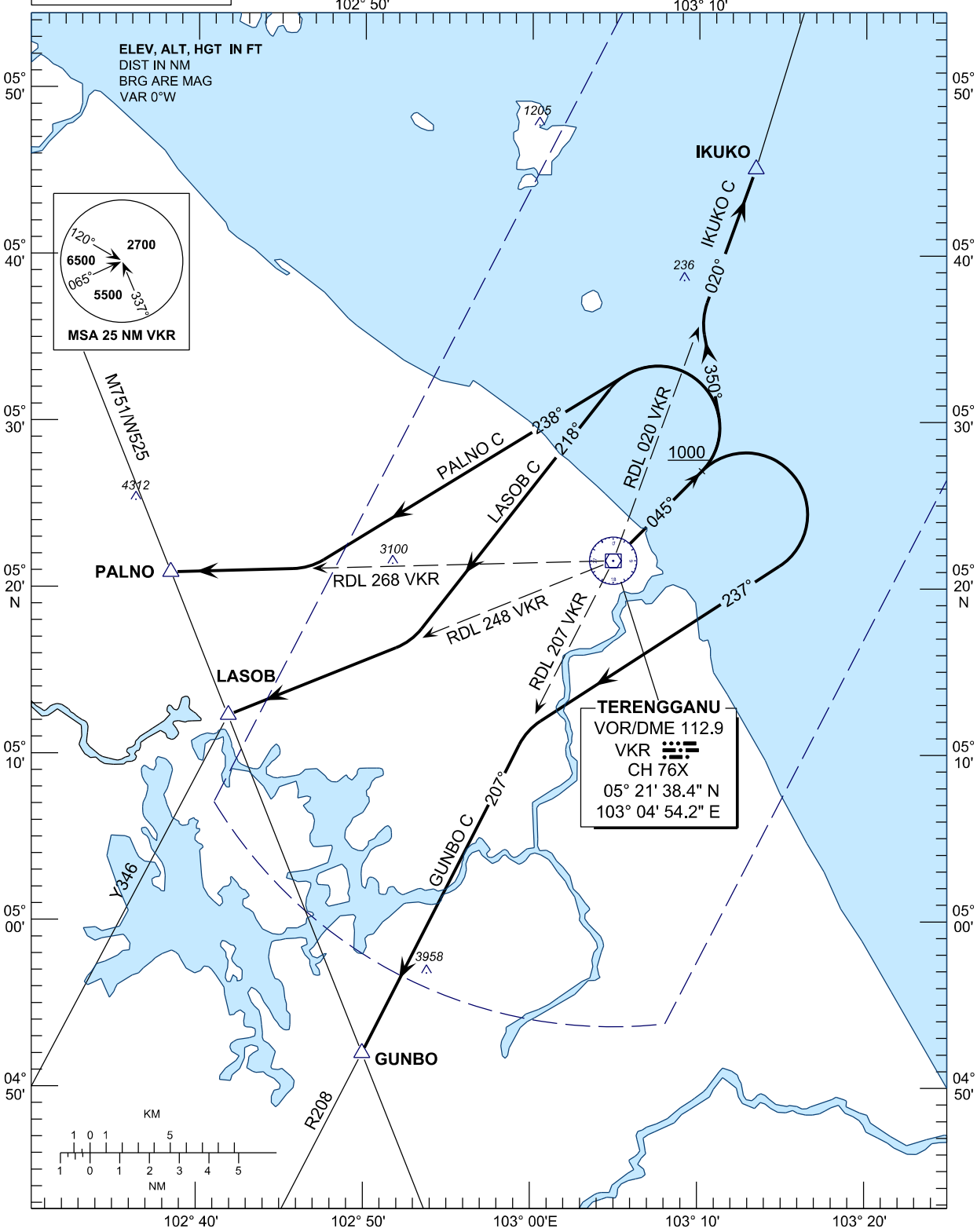
APP	123.6
	235.32
	121.5
TWR	119.05
SMC	121.6
ATIS	126.65

**KUALA TERENGGANU/
SULTAN MAHMUD (WMKN)
RWY 04**

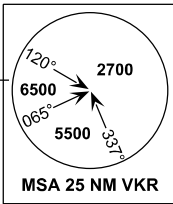
TRANSITION ALTITUDE
11000 FT

BANK ANGLE : 25° OR 3°/SEC

IKUKO C
PALNO C
LASOB C
GUNBO C



ELEV, ALT, HGT IN FT
DIST IN NM
BRG ARE MAG
VAR 0°W



TERENGGANU
VOR/DME 112.9
VCR
CH 76X
05° 21' 38.4" N
103° 04' 54.2" E

