

**STANDARD DEPARTURE CHART  
INSTRUMENT (SID) - ICAO**

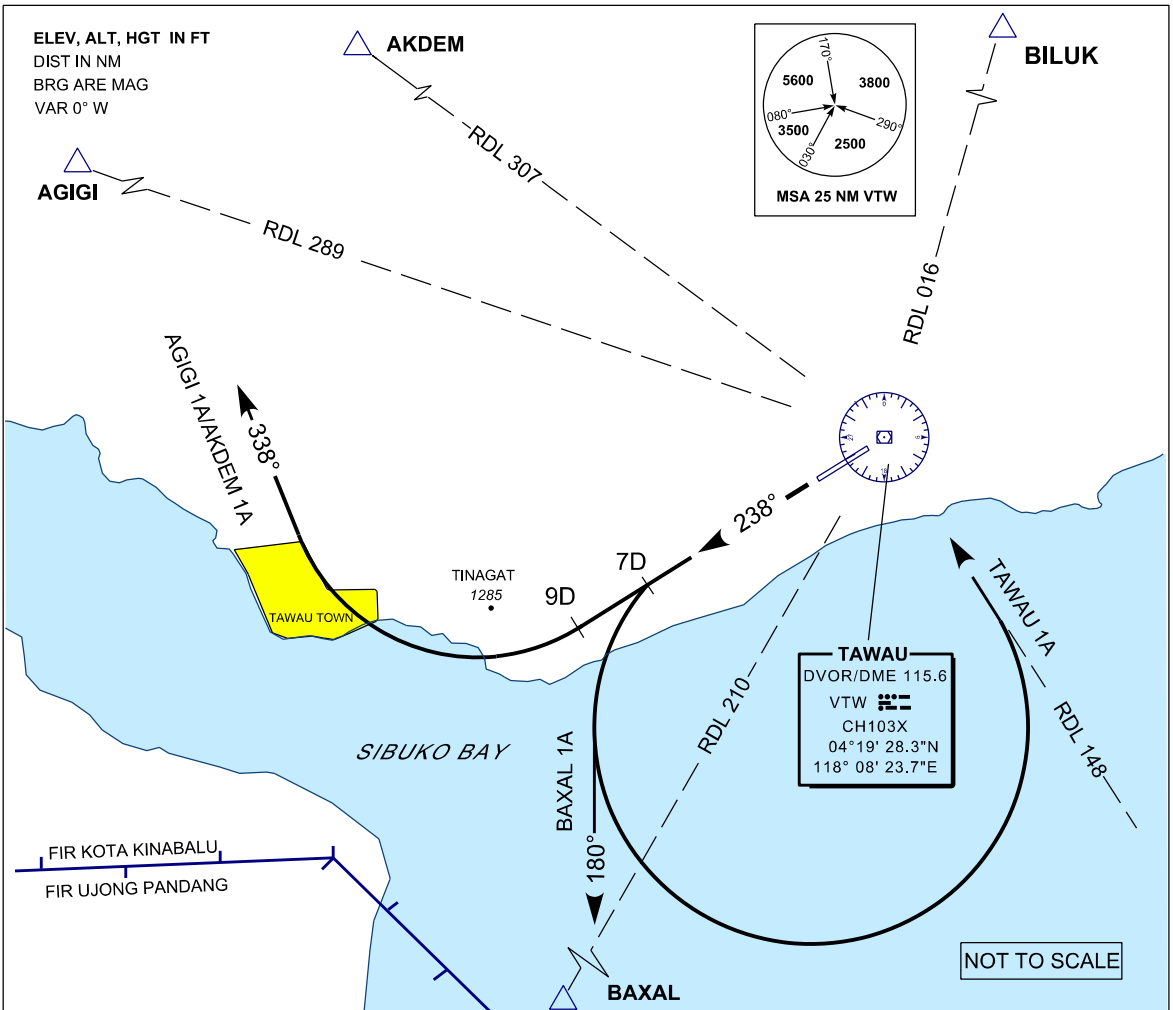
TRANSITION ALTITUDE  
11 000 FT

SMC 121.90  
TWR 122.50  
APP 123.55  
ATIS 126.25

**TAWAU/TAWAU (WBKW)  
RWY 24**

BAXAL 1A AGIGI 1A  
AKDEM 1A TAWAU 1A

ELEV, ALT, HGT IN FT  
DIST IN NM  
BRG ARE MAG  
VAR 0° W



**BAXAL 1A DEPARTURE**

PDG 5.2% UP TO 2500FT  
TRACK 238°  
AT 7DME TURN LEFT TRACK 180°  
INTERCEPT RDL 210 VTW TO BAXAL

**AGIGI 1A DEPARTURE**

PDG 5.2% UP TO 5500FT  
TRACK 238°  
AT 9DME TURN RIGHT TRACK 338°  
INTERCEPT RDL 289 VTW TO AGIGI

**TAWAU 1A DEPARTURE**

PDG 5.2% UP TO 2500FT  
TRACK 238°  
AT 7DME TURN LEFT  
TRACK TO VTW VOR

**AKDEM 1A DEPARTURE**

PDG 5.2% UP TO 5500FT  
TRACK 238°  
AT 9DME TURN RIGHT TRACK 338°  
INTERCEPT RDL 307 VTW TO AKDEM

RATE OF CLIMB - FT		75	100	150	200	250	300
GND SPEED - KT	5.2%	395	527	790	1053	1316	1580
GRADIENT	3.3%	251	334	501	668	835	1003

**COMMUNICATION FAILURE :**

SET TRANSPONDER CODE 7600  
CROSS BAXAL/AGIGI AKDEM/BILUK CLIMBING TO/AT LAST ASSIGNED AND  
ACKNOWLEDGED ALT BUT NOT BELOW MNM ALT CONTINUE CLIMB TO FPL FL