

INSTRUMENT APPROACH CHART - ICAO

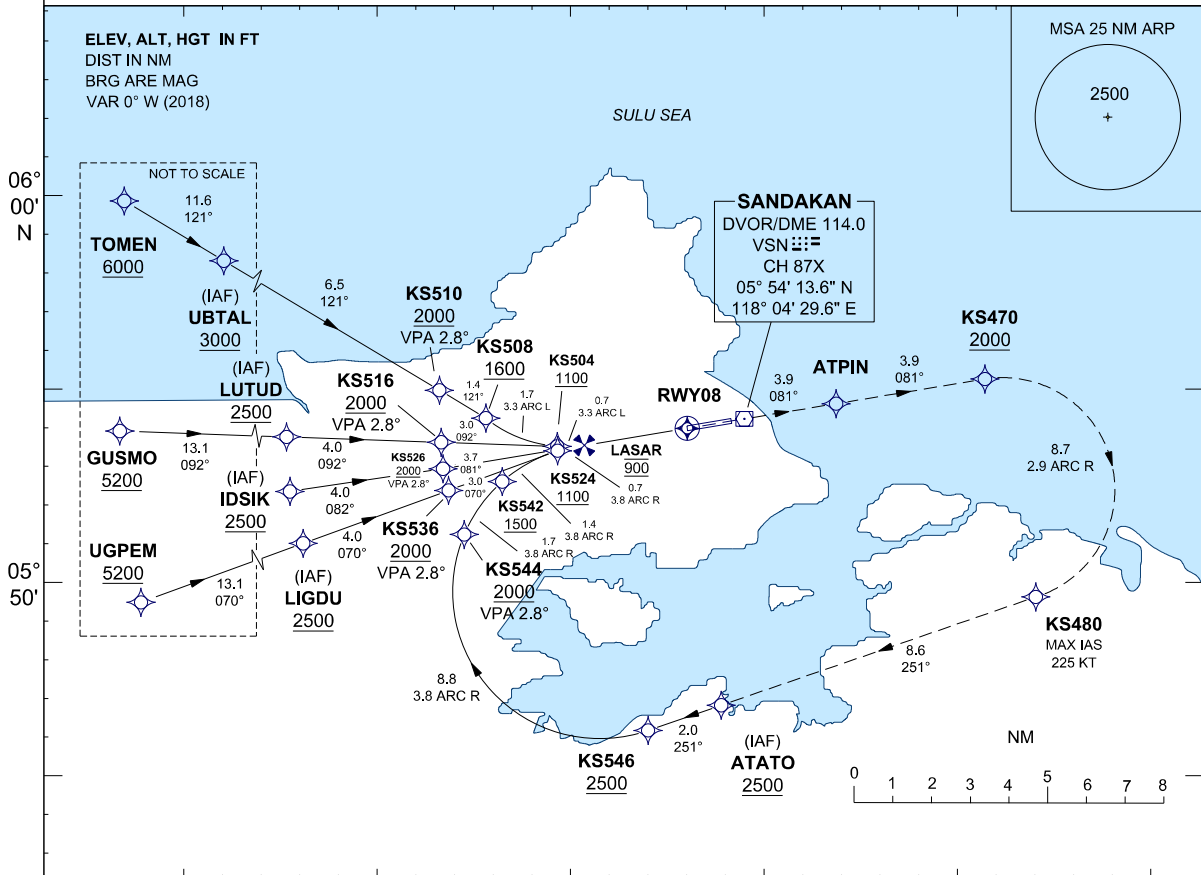
AERODROME ELEV 46 FT
 HEIGHTS RELATED TO
 THR RWY 08 - ELEV 40 FT

APP - 123.20
 TWR - 122.05
 SMC - 121.90
 ATIS - 128.20

SANDAKAN / SANDAKAN (WBKS) RWY 08

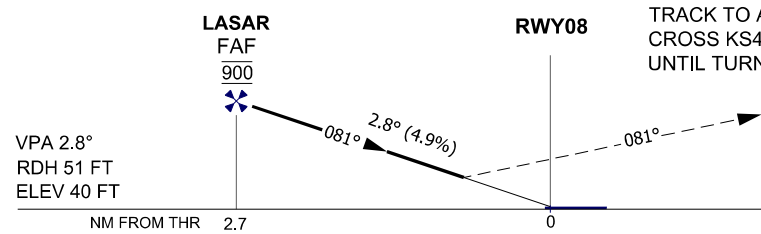
RNAV (RNP) Z

1. AUTHORIZATION REQUIRED
2. DUAL GNSS REQUIRED
3. RF REQUIRED
4. APPROACH NOT AUTHORIZED WHEN AIRPORT TEMPERATURE BELOW 20°C OR ABOVE 35°C
5. WBKS ALTIMETER SETTING REQUIRED.
6. PAPI AND VERTICAL PATH ANGLE NOT COINCIDENT
7. PROCEDURE REQUIRES RNP 0.3 FROM IAFS TO ATPIN
8. TOGA TO NAV REQUIRED
9. PROCEDURE REQUIRES RNP 1.0 IN FEEDER SEGMENTS
10. CLIMB GRADIENT OF 3.7% TO 2000 REQUIRED TO REACH KS470



TRANSITION LEVEL : FL 130
 TRANSITION ALT 11000

MISSED APPROACH
 CLIMB TO 2500 VIA THE RNAV (RNP) MISSED APCH TRACK TO ATATO OR AS DIRECTED BY ATC.
 CROSS KS470 AT 2000 OR ABOVE. MAX IAS 225 KT UNTIL TURN IS COMPLETE AT KS480



OCA/H		
ACFT CAT.	C	D
RNP 0.3	465 (425) / 1.5 KM	

GROUND SPEED - KT	70	90	100	120	140	160
RATE OF DESCENT (2.8°) (FEET/MIN)	347	446	495	594	693	792

DISTANCE TO THRESHOLD (NM)	2.7	2	1
ALTITUDE (FEET)	900	670	370