

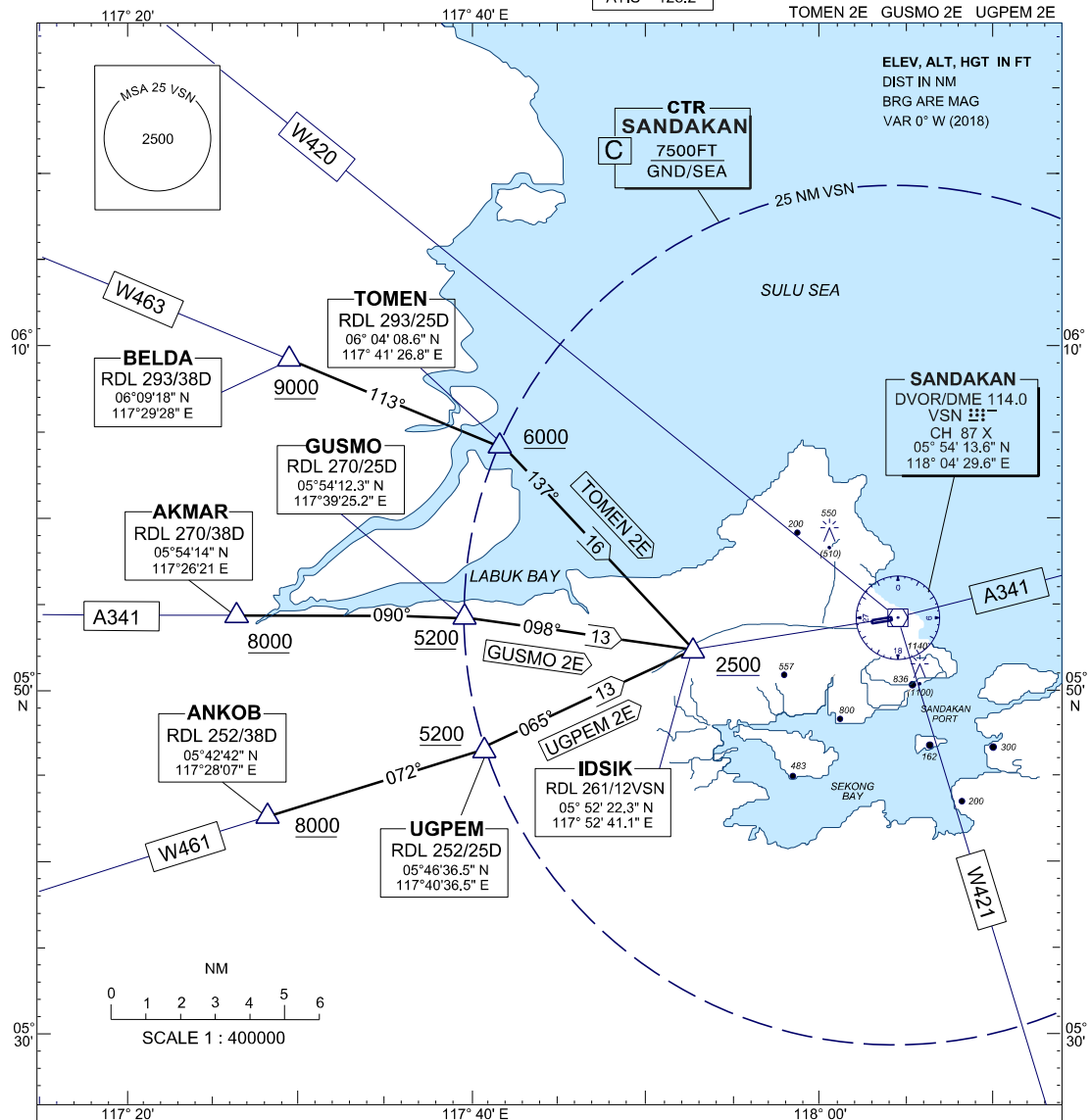
**STANDARD ARRIVAL CHART
INSTRUMENT (STAR) - ICAO**

TRANSITION ALTITUDE
11000FT

SMC 121.9
TWR 122.05
APP 123.2
ATIS 128.2

**SANDAKAN / SANDAKAN
(WBKS)
RWY 08**

TOMEN 2E GUSMO 2E UGPEM 2E



**TOMEN 2 ECHO ARRIVAL
GUSMO 2 ECHO ARRIVAL
UGPEM 2 ECHO ARRIVAL**

TOMEN 2 ECHO ARRIVAL
W463 - FROM TOMEN THEN TRACK 137° TO IDSIK
INTERCEPT LOC RWY 08

GUSMO 2 ECHO ARRIVAL
A341 - FROM GUSMO THEN TRACK 098° TO IDSIK
INTERCEPT LOC RWY 08

UGPEM 2 ECHO ARRIVAL
W461 - FROM UGPEM THEN TRACK 065° TO IDSIK
INTERCEPT LOC RWY 08

COMMUNICATION FAILURE :

- * SQUAWK 7600
- * IF UNDER PILOT NAVIGATION, CONTINUE ON STAR AND LAND
- * ENR 1.6-3 (2.1) AIP MALAYSIA APPLIES

CHANGES : CHANGE VOR TO DVOR
REMOVE NDB FROM THE CHART