

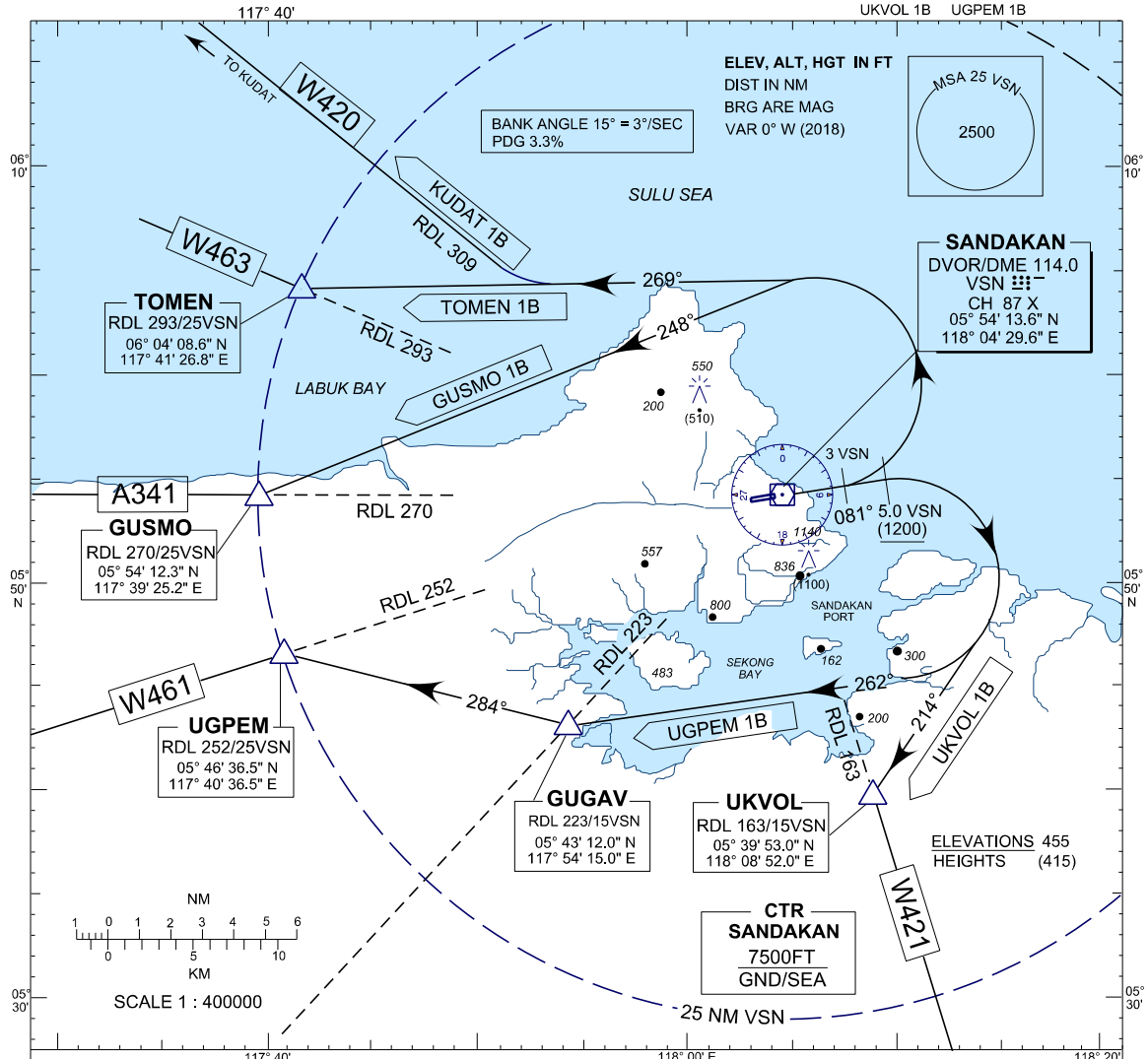
**STANDARD DEPARTURE CHART  
INSTRUMENT (SID) - ICAO**

**SANDAKAN / SANDAKAN  
(WBKS)  
RWY 08**

TRANSITION ALTITUDE  
11000FT

SMC 121.9  
TWR 122.05  
APP 123.2  
ATIS 128.2

KUDAT 1B TOMEN 1B GUSMO 1B  
UKVOL 1B UGPEM 1B



**KUDAT 1 BRAVO DEPARTURE  
TOMEN 1 BRAVO DEPARTURE  
GUSMO 1 BRAVO DEPARTURE  
UGPEM 1 BRAVO DEPARTURE  
UKVOL 1 BRAVO DEPARTURE**

**KUDAT 1 BRAVO DEPARTURE**

- \* TRACK 081° AT 3.0 DME VSN TURN LEFT
- \* TRACK 269° INTERCEPT RDL 309 VSN TO KUDAT

**TOMEN 1 BRAVO DEPARTURE**

- \* TRACK 081° AT 3.0 DME VSN TURN LEFT
- \* TRACK 269° INTERCEPT RDL 293 VSN TO TOMEN

**GUSMO 1 BRAVO DEPARTURE**

- \* TRACK 081° AT 3.0 DME VSN TURN LEFT
- \* TRACK 248° INTERCEPT RDL 270 VSN TO GUSMO

**UGPEM 1 BRAVO DEPARTURE**

- \* TRACK 081° AT 5.0 DME VSN TURN RIGHT
- \* TRACK 262° INTERCEPT RDL 223 VSN TO GUGAV (15D/VSN)
- \* AT GUGAV TRACK 284° INTERCEPT RDL 252 VSN TO UGPEM

**UKVOL 1 BRAVO DEPARTURE**

- \* TRACK 081° AT 5.0 DME VSN TURN RIGHT
- \* TRACK 214° INTERCEPT RDL 163 VSN TO UKVOL

CHANGES : CHANGE VOR TO DVOR  
CHANGE NOBID TO GUSMO