

**INSTRUMENT  
APPROACH  
CHART - ICAO**

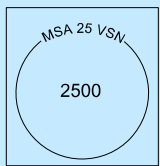
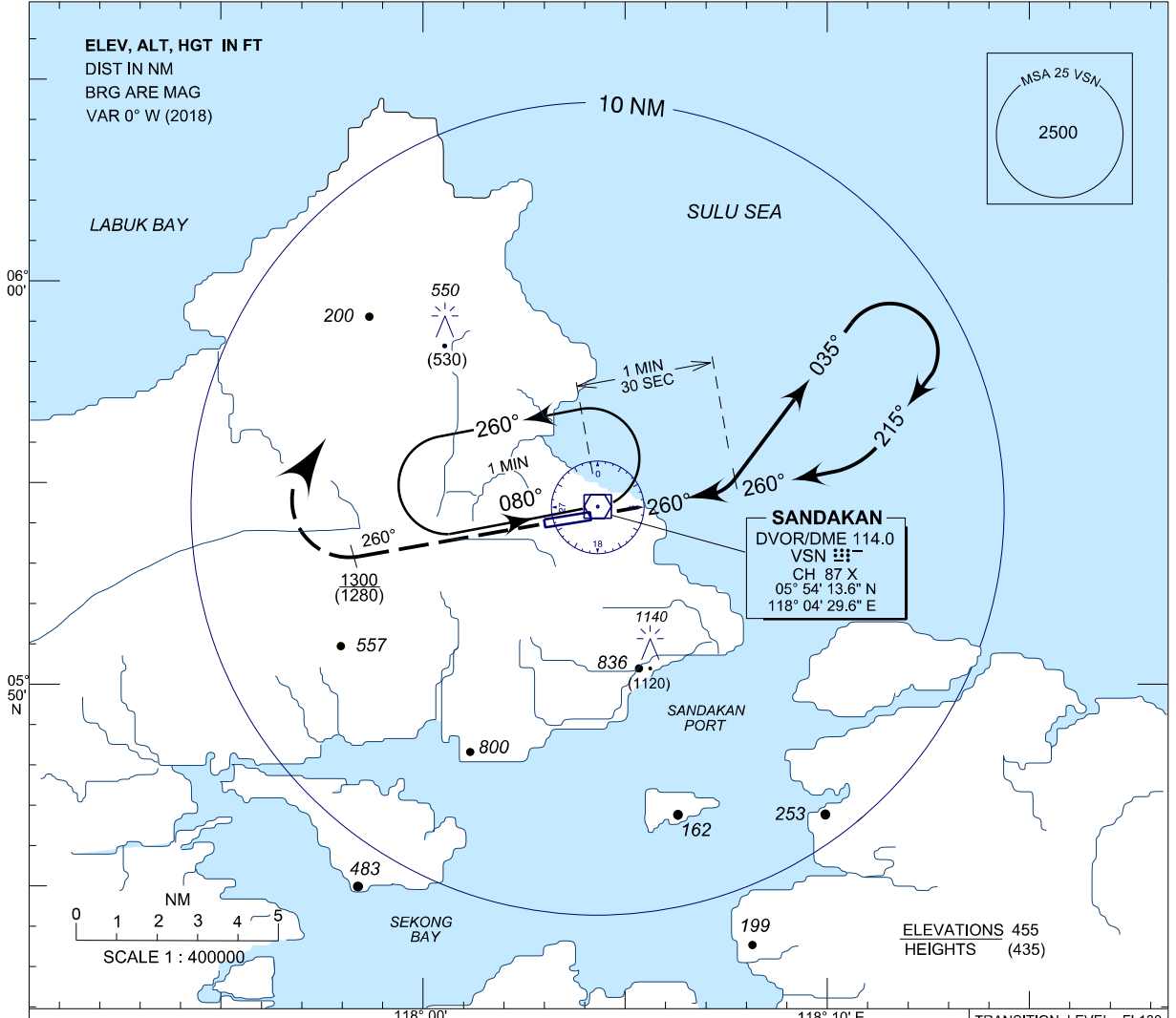
**AERODROME ELEV 46FT**  
HEIGHT RELATED TO  
THR RWY 26 - ELEV 20FT

SMC 121.9  
TWR 122.05  
APP 123.2  
ATIS 128.2

**SANDAKAN/SANDAKAN  
(WBKS)**

**RWY 26 (CAT C & D)**

VOR

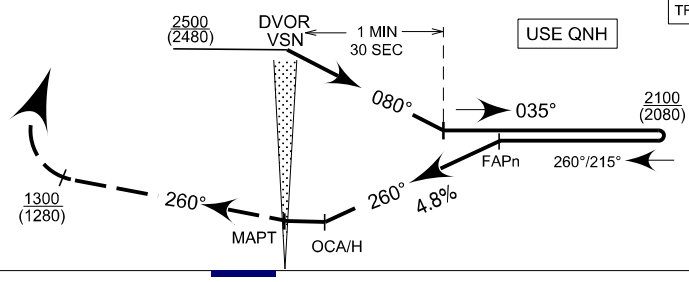


**SANDAKAN**  
DVOR/DME 114.0  
VSN   
CH 87 X  
05° 54' 13.6" N  
118° 04' 29.6" E

BASED ON TAS 220 KT (STILL AIR)

TRANSITION LEVEL : FL130  
TRANSITION ALT : 11000 FT

**MISSED APPROACH**  
AT MAPT CLIMB ON 260° TO  
1300(1280) OR ABOVE.  
TURN RIGHT AND RETURN  
TO HOLDING PATTERN OR  
AS DIRECTED BY ATC.



NM FROM VOR

OCA (OCH)				
CATEGORY OF AIRCRAFT	A	B	C	D
VOR/DME	-	-	400 (380)	-
CIRCLING	-	-	1400 (1380)	-
CAUTION	RIGHT HAND CIRCLING ONLY			

TIME TO TRESHOLD RUNWAY 26 FROM FAPN DISTANCE 7.0 NAUTICAL MILES						
GROUND SPEED (KNOTS)	70	90	120	150	180	210
MINUTES: SECONDS	-	-	3:30	2:48	2:19	2:00
4.8% DESCENT(FT/MIN)	-	-	585	732	880	1025

CHANGES : CHANGE VOR TO DVOR  
REMOVE NDB FROM THE CHART